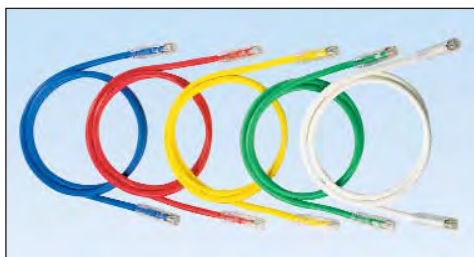


NetKey® Category 6 Patch Cords

PANDUIT®

DATA SHEET

Category 6/Class E patch cords are constructed of UTP 24 AWG stranded copper cable and a modular plug at each end. Patch cords are used in all work area outlets and patch panels. Patch cords are wired to be compatible with both T568A and T568B wiring schemes.



technical information

Category 6/Class E channel performance:	Meets all TIA/EIA-568-C.2 Category 6 and ISO 11801 2nd Edition Class E channel requirements at frequencies up to 250 MHz
FCC compliance:	Meets ANSI/TIA-968-A; contacts plated with 50 microinches of gold
IEC compliance:	Meets IEC 60603-7
PoE compliance:	Meets requirements of IEEE 802.3af and IEEE 802.3at for PoE applications
UL rated:	UL 1863 approved
RoHS compliance:	Compliant

key features and benefits

100% performance tested	Confidence that each patch cord delivers specified performance
Patented tangle free latch	Prevents snags and provides easy release
Slender strain relief boot	Provides easy access in high-density applications
Identification	Provides identification of performance level, length, and quality control number for future traceability
Variety of colors and lengths available	Meets individual length and color-coding requirements

applications

Applications include:

- Ethernet 10BASE-T, 100BASE-T (Fast Ethernet), and 1000BASE-T (Gigabit Ethernet)
- 155 Mb/s ATM, 622 Mb/s ATM, 1.2 Gb/s ATM
- Token Ring 4/16
- Voice over internet protocol (VoIP)

www.panduit.com

NetKey® Network Components

NetKey® Category 6 Patch Cords

Foot lengths: NK6PC3*Y
Meter lengths: NK6PC1M^Y

NetKey® Category 6 Jack Modules

Module: NK688M**
Convenience pack of 25 modules: NK688M**-Q

NetKey® Category 6 Punchdown Patch Panels

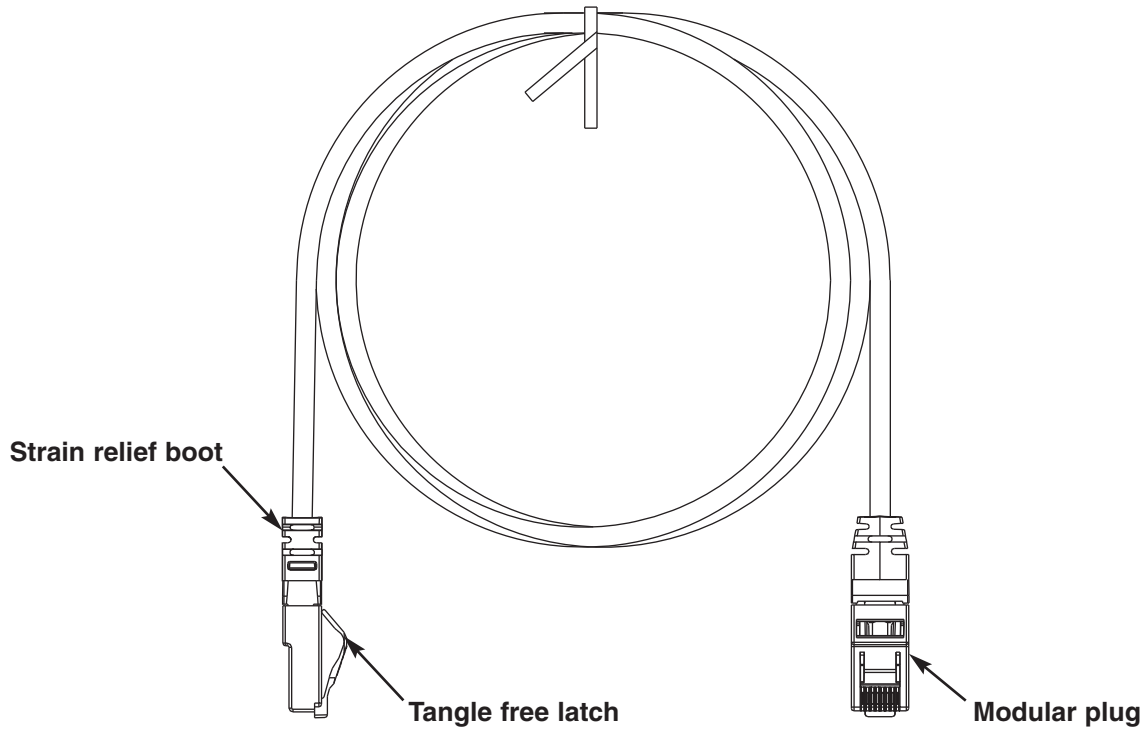
12-port: NK6PPG12WY
24-port, 1 RU: NK6PP24P
48-port, 2 RU: NK6PP48P

*For standard lengths other than 3 feet (5, 7, 10, 14 or 20) change the length designation in part number to the desired length. For standard cable colors other than Off White, add suffix BU (Blue), GR (Green), RD (Red), or YL (Yellow) before the Y at the end of the part number. For example, the part number for a blue 5 foot patch cord is NK6PC5BUY.

^For standard lengths other than 1 meter (2, 3, 4 or 5) change the length designation in part number to the desired length. For standard cable colors other than Off White, add suffix BU (Blue), GR (Green), RD (Red), or YL (Yellow) before the Y at the end of the part number. For example, the part number for a blue 5 meter patch cord is NK6PC5MBUY.

**To designate a color, add suffix IW (Off White), EI (Electric Ivory), IG (Int'l Gray), WH (White), BL (Black), OR (Orange), RD (Red), BU (Blue), GR (Green), or YL (Yellow).

NetKey® Category 6 Patch Cords



WORLDWIDE SUBSIDIARIES AND SALES OFFICES

PANDUIT CANADA
Markham, Ontario
cs-cdn@panduit.com
Phone: 800.777.3300

PANDUIT EUROPE LTD.
London, UK
cs-emea@panduit.com
Phone: 44.20.8601.7200

PANDUIT SINGAPORE PTE. LTD.
Republic of Singapore
cs-ap@panduit.com
Phone: 65.6305.7575

PANDUIT JAPAN
Tokyo, Japan
cs-japan@panduit.com
Phone: 81.3.6863.6000

PANDUIT LATIN AMERICA
Guadalajara, Mexico
cs-la@panduit.com
Phone: 52.33.3777.6000

PANDUIT AUSTRALIA PTY. LTD.
Victoria, Australia
cs-aus@panduit.com
Phone: 61.3.9794.9020

For a copy of Panduit product warranties, log on to www.panduit.com/warranty

PANDUIT®

For more information
Visit us at www.panduit.com
Contact Customer Service by email: cs@panduit.com
or by phone: 800.777.3300

©2012 Panduit Corp.
ALL RIGHTS RESERVED.
NKDS31--WW-ENG
Replaces WW-NKDS10
12/2012