

FEATURES & SPECIFICATIONS

INTENDED USE — Our recessed LED module is the most economical means to create a well lit environment with exceptional energy efficiency and near zero maintenance. Great for retrofit into existing downlight cans or new construction and remodel applications. Unique torsion spring and friction clip retention allows fitment into nearly 100% of installed cans. The LED module maintains at least 70% light output for 50,000 hours.

CONSTRUCTION — Aluminum spun reflector with deep baffle configuration for reduced glare. Combined LED and driver printed circuit board attached. Inner reflector cone funnels light through the pressed-in diffused lens.

Baffle and open trim inserts are available in multiple finishes.

OPTICS — Diffused lens at end of mixing chamber to provide even light distribution for general illumination, equivalent to 65W BR30 lamp.

Wide flood beam angle at > 45°.

ELECTRICAL — Center 2 Edge™ (patent pending) technology created for a single point source. Primary power disconnect provided for simple connection to a dedicated LED connector in the housing.

Dimming down to 10%. For compatible dimmers, refer to [Compatible Dimmers Chart](#).

P Series' patent pending driver has zero inrush which allows power loads to be calculated with actual rated wattages.

Example: 53 units of 5BPMW LED fixtures can be installed in line with a 600-watt dimmer. 600W/11.2W = 53.5 fixtures.

Standard input wattage is 11.2 watts or less; equivalent to 65-watt incandescent.

*Actual wattage may differ by +/-5% when operating at 120V +/-10%.

INSTALLATION — Suitable for installation in standard height rough-in sections.

E26 socket adaptor and splice kit ships standard. This enables easy installation or permanent conversion to an LED source for Title 24 compliance.

Twin torsion springs ensure easy installation.

Friction clips included to allow fitment into cans without torsion brackets from an inside diameter of 5.0" to 5.6".

LISTINGS — CSA certified to US and Canadian safety standards. ENERGY STAR® qualified; California T24 compliant. Wet location listed for indoor use only. WSEC ASTM E283 for Air-Tight (with IC housings).

WARRANTY — 5-year limited warranty. Complete warranty terms located at

www.acuitybrands.com/CustomerResources/Terms_and_conditions.aspx

Actual performance may differ as a result of end-user environment and application.

Note: Specifications subject to change without notice.

PATENTS PENDING.

Catalog Number
Notes
Type

LED Recessed Downlighting

5BP/50P

5" LED Module

IC/Non-IC

Retrofit



E26 adaptor (included)



Splice kit (included)



Specifications

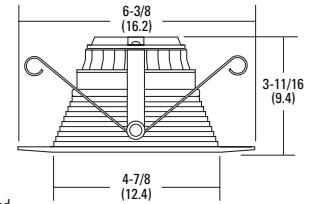
Aperture: 4-7/8 (12.4)

Ceiling opening: Determined by rough-in

Overlap trim: 6-3/8 (16.2)

Height: 3-11/16 (9.4)

All dimensions are inches (centimeters) unless otherwise indicated.



ORDERING INFORMATION

Lead times will vary depending on options selected. Consult with your sales representative.

Example: 5BP TRMW LED 27K 90CRI

Series/Finish	LED		Voltage	Options
	Lamp	CCT / CRI / W / Lumens ¹		
5BPMW 5" Baffle LED module, matte white	LED	(blank) 3000 K / 83CRI / 10.6W / 620L	(blank) 120V	L5LED T24 New construction rough-in LED base
5BP TRMW 5" Baffle LED module, black baffle, matte white flange		27K 90CRI 2700 K / 93CRI / 11.2W / 600L		L5RLED T24 Remodel rough-in LED base
5BPBN 5" Baffle LED module, brushed nickel		30K 90CRI 3000 K / 93CRI / 11.2W / 600L		L5 New construction rough-in ²
5BPORB 5" Baffle LED module, oil-rubbed bronze		40K 90CRI 4000K/95CRI/11.2W/650L		L5R Remodel rough-in ²
5OPA 5" Open LED module, clear diffuse	LED	(blank) 3000 K / 83CRI / 10.6W / 620L	(blank) 120V	L5LED T24 New construction rough-in LED base
5OPAZ 5" Open LED module, clear specular		27K 90CRI 2700 K / 93CRI / 11.2W / 600L		L5RLED T24 Remodel rough-in LED base
5OPA TRMW 5" Open LED module, clear diffuse, matte white flange		30K 90CRI 3000 K / 93CRI / 11.2W / 600L		L5 New construction rough-in ²
5OPAZ TRMW 5" Open LED module, clear specular, matte white flange		40K 90CRI 4000K/95CRI/11.2W/650L		L5R Remodel rough-in ²

TRIM INSERTS (for field configuration; ordered separately)

Example: 5BP TRMW R12

Series/Finish		Series/Finish		Packaging
5BP TRMW 5" Baffle black, matte white flange insert	5OPAZ 5" Open clear specular insert	5OPAZ TRMW 5" Open clear diffuse, matte white flange insert	5OPAZ TRMW 5" Open clear specular, matte white flange insert	R12 Retail pack of 12 units
5BPBN 5" Baffle brush nickel insert				U Unit
5BPORB 5" Baffle oil-rubbed bronze insert				
5OPA 5" Open clear diffuse insert				

Accessories: Order as separate catalog number.

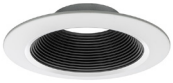
TSA5 5" Torsion spring adaptor

Notes

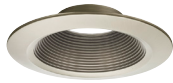
- Total system delivered lumens.
- Must be ordered on a separate line.

5" LED Module

TRIM INSERTS



Black Baffle with Matte White Trim Ring (TRMW)



Brushed Nickel Baffle (BN)



Oil-rubbed Bronze Baffle (ORB)



Clear Diffuse with Matte White Trim Ring (A TRMW)



Clear Diffuse (A)



Clear Specular with Matte White Trim Ring (AZ TRMW)



Clear Specular (AZ)

PHOTOMETRICS

Distribution Curve

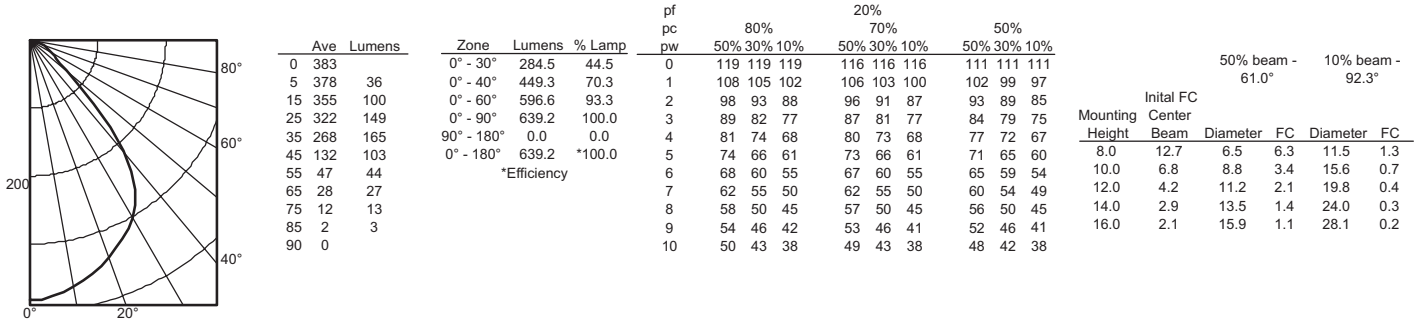
Distribution Data

Output Data

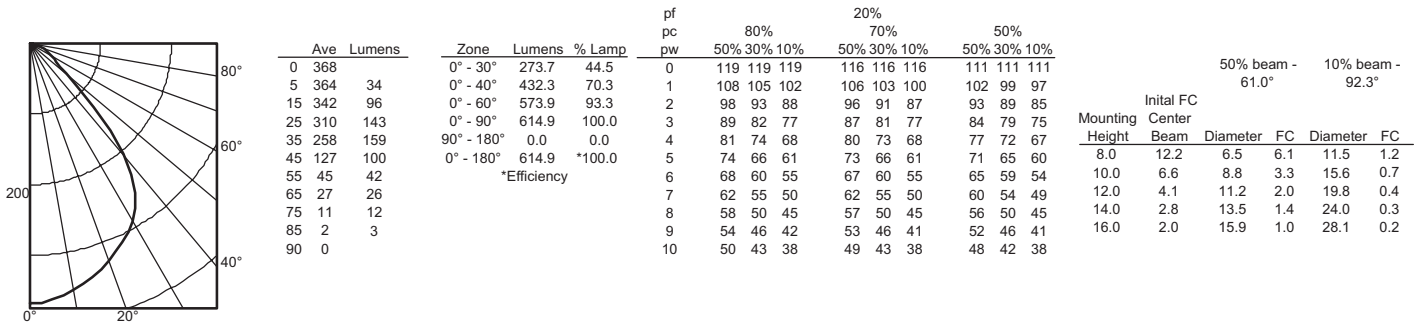
Coefficient of Utilization

Illuminance Data at 30" Above Floor for a Single Luminaire

5BPMW LED 80CRI, 3000 K LEDs, input watts: 11.16, delivered lumens: 640, LM/W= 57.3, test no. LTL 23666, tested in accordance with IESNA LM 79-08



5BPMW LED 90CRI, 3000 K LEDs, input watts: 11.16, delivered lumens: 615, LM/W= 55, test no. LTL 23666P, tested in accordance with IESNA LM 79-08



5" LED Module

LIGHTING FACTS

LED lighting facts
A Program of the U.S. DOE

Light Output (Lumens) 600
Watts 11.3
Lumens per Watt (Efficacy) 53

Color Accuracy
Color Rendering Index (CRI) 92

Light Color
Correlated Color Temperature (CCT) 2700 (Warm White)

2700K 3000K 4500K 6500K

All results are according to IESNA LM-79-2008: Approved Method for the Electrical and Photometric Testing of Solid-State Lighting. The U.S. Department of Energy (DOE) verifies product test data and results.

Visit www.lightingfacts.com for the Label Reference Guide.

Registration Number: JB22-TJ4I26 (2/27/2014)
Model Number: 5BPMW LED 27K 90CRI
Type: Retrofit Kit - Downlight

LED lighting facts
A Program of the U.S. DOE

Light Output (Lumens) 600
Watts 11.3
Lumens per Watt (Efficacy) 53

Color Accuracy
Color Rendering Index (CRI) 93

Light Color
Correlated Color Temperature (CCT) 3000 (Bright White)

2700K 3000K 4500K 6500K

All results are according to IESNA LM-79-2008: Approved Method for the Electrical and Photometric Testing of Solid-State Lighting. The U.S. Department of Energy (DOE) verifies product test data and results.

Visit www.lightingfacts.com for the Label Reference Guide.

Registration Number: JB22-GFJLQ1 (2/27/2014)
Model Number: 5BPMW LED 30K 90CRI
Type: Retrofit Kit - Downlight

LED lighting facts
A Program of the U.S. DOE

Light Output (Lumens) 650
Watts 11.25
Lumens per Watt (Efficacy) 57

Color Accuracy
Color Rendering Index (CRI) 95

Light Color
Correlated Color Temperature (CCT) 4000 (Bright White)

2700K 3000K 4500K 6500K

All results are according to IESNA LM-79-2008: Approved Method for the Electrical and Photometric Testing of Solid-State Lighting. The U.S. Department of Energy (DOE) verifies product test data and results.

Visit www.lightingfacts.com for the Label Reference Guide.

Registration Number: NJSM-P4AKOY (8/6/2014)
Model Number: 5BPMW LED 40K 90CRI
Type: Luminaire - Downlight

LED lighting facts
A Program of the U.S. DOE

Light Output (Lumens) 620
Watts 10.5
Lumens per Watt (Efficacy) 60

Color Accuracy
Color Rendering Index (CRI) 85

Light Color
Correlated Color Temperature (CCT) 3000 (Bright White)

2700K 3000K 4500K 6500K

Warranty** Yes

All results, except LED Lumen Maintenance, are according to IESNA LM-79-2008: Approved Method for the Electrical and Photometric Testing of Solid-State Lighting. The U.S. Department of Energy (DOE) verifies product test data and results.

** See www.lightingfacts.com/products for details.

Registration Number: JB22-V6SVDY (8/2/2013)
Model Number: 5BPMW
Type: Recessed downlight

ADDITIONAL DATA

	ENERGY DATA* - 600 Lumens	
	CRI - 83	CRI - 93
Min. starting temp	-18°C (0°F)	-18°C (0°F)
Max. temp	46°C (115°F)	46°C (115°F)
EMI/RFI	FCC Title 47 CFR, Part 15, Class B	FCC Title 47 CFR, Part 15, Class B
Sound rating	A standards	A standards
Input voltage	120V	120V
Min. power factor	0.97	0.97
Input frequency	50/60 Hz	50/60 Hz
Rated wattage	10.6W	11.3W
Input power	10.6W	11.3W
Input current	.09A	.09A
Input current	.11A	.09A

*Values at non-dimming line voltage.

Trim finish	Lumen multiplier
Matte White	1.00 (Baseline)
Clear Diffuse	0.99
Clear Specular	0.99
Brushed Nickel	0.83
Black Baffle	0.76
Oil Rubbed Bronze	0.78

Color temperature	Lumen multiplier
2700K	0.97
3000K	1.00 (Baseline)
4000K	1.08



5BP-50P LED