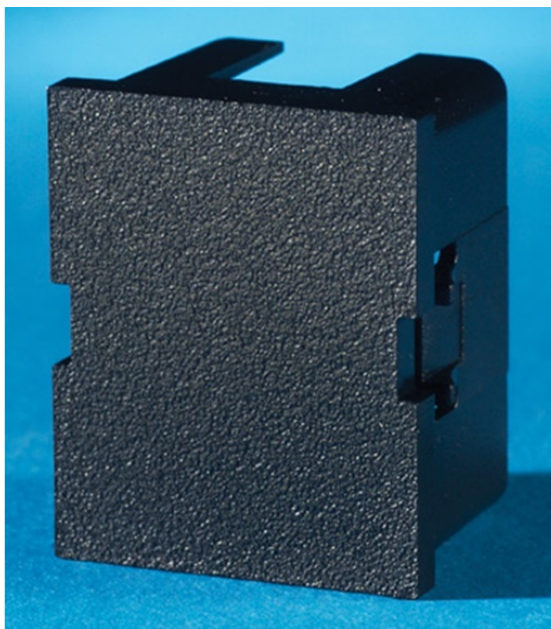


TracJack Blank Modules (package of ten), Black

OR-42100002-00



Package of ten TracJack blank inserts can be used to fill unoccupied TracJack openings. These front removable blanks can be later exchanged for TracJack connectors to service future needs

features & benefits

- **Snap-in design:** Quick and easy installation.
- **Fills unoccupied TracJack openings:** Holds space for future expansion.

specifications

General Info

Color: Black
Footprint: TracJack

Listing Agencies/Third Party Information

CUL Listing No: E131600
UL Listing No: E131600
UL Standard: Yes

Construction Information

Component1: Plastic TracJack Blank
Material1: High Impact Thermoplastic ABS 94V-0

Dimensions

Depth Metric: 14.48 mm
Height Metric: 23.37 mm
Height U S: .92"
Width Metric: 18.54 mm

Buy American Act Compliance

Country of Origin: TAIWAN
Buy American Act Status: Trade Agreement Act Compliant