

4125/90 Series Single Pole Toggle Switches

Applications

- McGill full-size, single pole toggle switches are available in several electrical ratings to meet a variety of requirements.
- Ruggedly constructed with metallic toggle and threaded bushing to ensure extended service life.
- Marine, food service, generator, industrial control and office automation markets.
- Appropriate for use in low voltage DC applications.



Features

- A variety of circuits are available.
- Available with screw, solder, and 1/4" Quick connect terminals.
- Mounting hardware and terminal screws (where applicable) furnished unassembled.
- Mounting hardware consists of nickel plated hex nut and knurled nut.
- Indicating plate is furnished for maintained ON-OFF circuits.

Standard Materials

- Base: phenolic 302 °F/150 °C
- Bat handle: nickel plated brass
- Bushing: nickel plated brass

Certifications and Compliances

-  UL Recognized Component
- UL File Number: E335442
- UL Standard: 1054, Guide WORY2
- CSA File Number: 249055
- CSA Standard: C22.2 No. 55
-  RoHS Compliant



| Circuitry | | | Screw Term. | | | Solder Term. | | |
|---------------|-----|------|-------------|-------------------|--|--------------|-------------------|--|
| A | B | C | Poles | Catalog Number | Rating | Poles | Catalog Number | Rating |
| 10 Amp | | | | | | | | |
| ON | — | OFF | SPST | 4125-0001N | 10 Amp, 125 Vac/Vdc 5 Amp, 250 Vac/Vdc 1/4 HP, 125 Vac/Vdc | SPST | 4125-0002N | 10 Amp, 125 Vac/Vdc 5 Amp, 250 Vac/Vdc 1/4 HP, 125 Vac/Vdc |
| 15 Amp | | | | | | | | |
| ON | OFF | ON | SPDT | 91-0001N | 15 Amp, 125 Vac 10 Amp, 250 Vac 3/4 HP, 120-240 Vac | SPDT | 91-0002N | 15 Amp, 125 Vac 10 Amp, 250 Vac 3/4 HP, 120-240 Vac |
| ON | — | ON | SPDT | 92-0001N | | SPDT | 92-0002N | |
| (ON) | OFF | (ON) | SPDT | 93-0001N | | SPDT | 93-0002N | |
| ON | OFF | (ON) | SPDT | 93-1001N | | SPDT | 93-1002N | |
| (OFF) | — | ON | SPST | 93-2001N | | SPST | 93-2002N | |
| (ON) | — | OFF | SPST | 93-3001N | | SPST | 93-3002N | |
| ON | — | (ON) | SPDT | 93-4001N | | SPDT | 93-4002N | |
| 20 Amp | | | | | | | | |
| ON | — | OFF | SPST | 90-0001N | 20 Amp, 125 Vac 12 Amp, 250 Vac 1 HP, 120-240 Vac | SPST | 90-0002N | 20 Amp, 125 Vac 12 Amp, 250 Vac 1 HP, 120-240 Vac |

() Momentary. Poles: SP = single pole, DP = double pole, ST = single throw, DT = double throw.

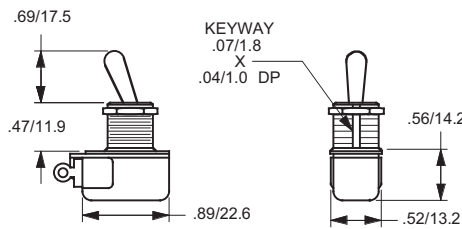
Shaded catalog numbers are normally stocked items. All other items are made to order. Contact your local sales representative for pricing.

4125/90 Series Single Pole Toggle Switches

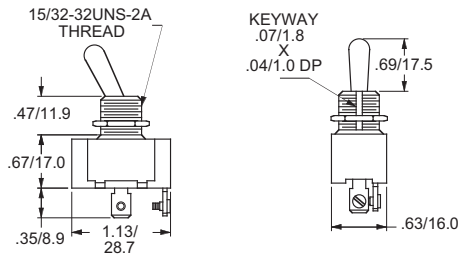
Switches

| Circuitry | | | 1/4" Q.C. Term. | | 6" Wire Leads | | | |
|---------------|-----|------|-----------------|-------------------|--|-------|-------------------|--|
| A | B | C | Poles | Catalog Number | Rating | Poles | Catalog Number | Rating |
| 10 Amp | | | | | | | | |
| ON | — | OFF | SPST | 4125-0003N | 10 Amp, 125 Vac/Vdc 5 Amp, 250 Vac/Vdc 1/4 HP, 125 Vac/Vdc | SPST | 4125-0004N | 10 Amp, 125 Vac/Vdc 5 Amp, 250 Vac/Vdc 1/4 HP, 125 Vac/Vdc |
| 15 Amp | | | | | | | | |
| ON | OFF | ON | SPDT | 91-0003N | | — | — | — |
| ON | — | ON | SPDT | 92-0003N | | — | — | — |
| (ON) | OFF | (ON) | SPDT | 93-0003N | 15 Amp, 125 Vac | — | — | — |
| ON | OFF | (ON) | SPDT | 93-1003N | 10 Amp, 250 Vac | — | — | — |
| (OFF) | — | ON | SPST | 93-2003N | 3/4 HP, 120-240 Vac | — | — | — |
| (ON) | — | OFF | SPST | 93-3003N | | — | — | — |
| ON | — | (ON) | SPDT | 93-4003N | | — | — | — |
| 20 Amp | | | | | | | | |
| ON | — | OFF | SPST | 90-0003N | 20 Amp, 125 Vac 12 Amp, 250 Vac 1 HP, 120-240 Vac | — | — | — |

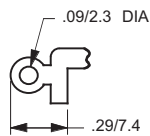
Dimensions in Inches/Millimeters



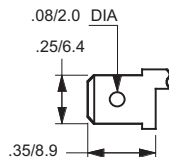
10 Amp Toggle Switch



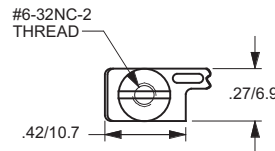
15 & 20 Amp Toggle Switch



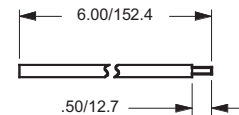
10 Amp Solder Lug Terminal



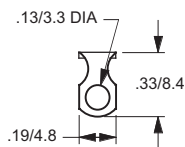
10 Amp 1/4" Q.C. Terminal



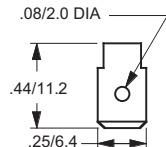
10 Amp Screw Terminal



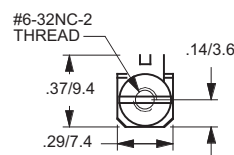
10 Amp Integrated Wire Lead Terminal



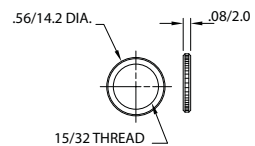
15 & 20 Amp Solder Lug Terminal



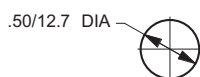
15 & 20 Amp 1/4" Q.C. Terminal



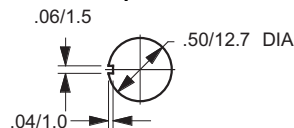
15 & 20 Amp Screw Terminal



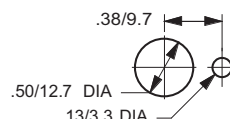
Knurled Nut



Mounting Hole



Mounting Hole With Keyway



Mounting Hole With Locking Ring

() Momentary. Poles: SP = single pole, DP = double pole, ST = single throw, DT = double throw.

Shaded catalog numbers are normally stocked items. All other items are made to order. Contact your local sales representative for pricing.