

S

COMPACT REMOTE

MR16 Surface Mount
Single, Double or Triple
6V, 12V, & 24V Lamps

SP Approvals:
® CSA Certified to C22.2 #141.15

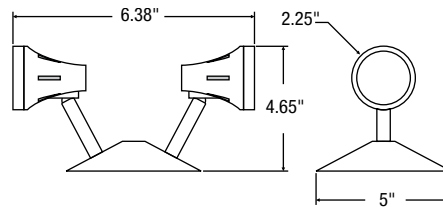


**quick
ship**

DESCRIPTION

The S series of commercial MR16 remotes provides exceptional light output in a compact, traditional design. The die cast, all metal housing is fully adjustable with a friction lock tilt and swivel that can be locked in place with a rear mounted set screw. The canopy is designed to mount directly to typical electrical junction boxes. Available in 6V, 12V and 24V models, all utilizing low glare, MR16 quartz halogen or LED lamps.

DIMENSIONS



MECHANICAL

- Die cast, solid metal housing with die cast, twist lock lamp collar
- Complete adjustability - both tilt and swivel
- 5" diameter canopy standard
- Two canopy mounting holes designed to match standard electrical junction boxes
- White paint finish is standard, black colour is optional
- MR16 lamp designed with low glare reflector and available in 6VDC, 12VDC or 24VDC

ORDERING GUIDE – LED

Series	Number of heads	Voltage	Wattage	Lamp type	Colour	Options†
S	1 - Single head	06 - 24 - 6VDC to 24VDC operational	4W - 4 watts	LR - LED	WH - White (standard) BK - Black	LCP, TP, WG, PG
	2 - Double head		5W - 5 watts	LA - LED		
	3 - Triple head	12 - 24 - 12VDC to 24VDC operational	6W - 6 watts	LA - LED		
	4 - Quad head (require 12" dia. canopy)		7W - 7 watts			

ORDERING GUIDE – INCANDESCENT

Series	Number of heads	Voltage	Lamp	Colour	Options†
S	1 - Single head	06V - 6VDC 12V - 12VDC 24V - 24VDC	See lamp selection chart	WH - White (standard) BK - Black	LCP, TP, WG, PG
	2 - Double head				
	3 - Triple head				
	4 - Quad head (require 12" dia. canopy)				

QUICK SHIP: Not all products are Quick Ship. To view our Quick Ship qualified products, please consult our Quick Ship Product Guide at stanprols.com/quick-ship-product-guide. Product availability is subject to change without notice. Please contact your Stanpro customer service representative to confirm inventory levels at time of order.

INCANDESCENT LAMP SELECTION

	6 Volts	12 Volts	24 Volts
MR16 - Small head			
Quartz halogen	08Q, 10Q, 12Q, 20Q	08Q, 10Q, 12Q, 20Q, 35Q, 50Q	10Q, 12Q, 20Q, 35Q, 50Q

† For detailed options descriptions, please consult the options page.