

Maximum versatility, highly efficient and simple to use.

SV SERIES T5 STRIP WITH REFLECTOR OPTIONS



SV T5 Strip Asymmetric Reflector (SV5R)



SV T5 Strip

SV T5 Strip Symmetric Reflector (SV5R)

PHILIPS DAY-BRITE / PHILIPS CFI SV SERIES T5 STRIP
2" WIDTH, 1 5/8" DEPTH
22", 34", 46", 92" LENGTHS
1 OR 2 LAMP T5

2" wide SV Series T5 Strip utilizes compact, high efficiency T5 or T5HO lamps. Options include lengths of 22", 34", 46" and 92" with a full array of accessories that include reflectors, wireguards, and stem kits.

Project: _____
 Location: _____
 Catalog No: _____
 Fixture Type: _____
 Mfg: _____ Lamps: _____ Qty: _____
 Notes: _____

Ordering Guide

Explanation of Catalog Number Example: **SV4S228-120PI**

Strip	Nominal Fixture Length	Ceiling Type	Lamp Quantity in a Luminaire Cross Section	Lamp Type	Voltage	Ballast Type	Options
<input type="text" value="SV"/>	<input type="text"/>	<input type="text" value="S"/>	<input type="text"/>	<input type="text" value="-"/>	<input type="text"/>	<input type="text"/>	<input type="text"/>
Strip T5 2" wide x 1 5/8" deep channel	2 = nominal 22" 3 = nominal 34" 4 = nominal 46" 8 = nominal 92" (2 or 4 lamps in tandem)	S = Surface	1 or 2	(Nominal 22") 14 = 14W T5 24 = 24W T5 HO (Nominal 34") 21 = 21W T5 39 = 39W T5 HO (Nominal 46") 28 = 28W T5 54 = 54W T5 HO	UNV = 120/277V 120 = 120V 277 = 277V 347 = 347V	PG = Electronic T5 Program Start PI = Electronic T5 Instant Start PF = T5 Power Spec Dimming* *Not available in 347V	Add appropriate suffix to catalog No.

Ordering Guide (Reflector, order separately)

Explanation of Catalog Number Example: **SV5R1W4SSLD**

Reflector Type	Reflector Style	Finish	Reflector Length	Light Distribution	Reflector Type
<input type="text" value="SV5R"/>	<input type="text" value="1"/>	<input type="text"/>	<input type="text"/>	<input type="text"/>	<input type="text"/>
Reflector for SV T5 strip	1	W = White S = Specular	2 = 22" 3 = 34" 4 = 46"	S = Symmetric A = Asymmetric	SLD = Solid SLT = Slotted (white only) PER = Microperforated (white only)



SV SERIES T5 STRIP WITH REFLECTOR OPTIONS

Features

- Only 2" wide.
- Utilizes compact, high efficiency, T5 or T5HO lamps.
- Fully enclosed wiring.
- Optional white or specular, symmetric and asymmetric reflectors (order separately).
- Convenience outlet and switch K.O.s provided.
- Push through lamp holders with rotor for secure lamp retention.
- Optional hanger and wire guards.

Specifications

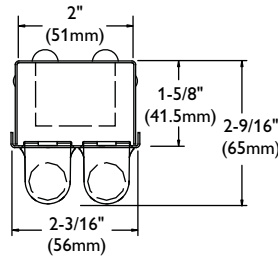
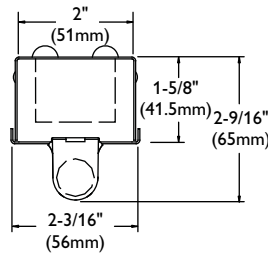
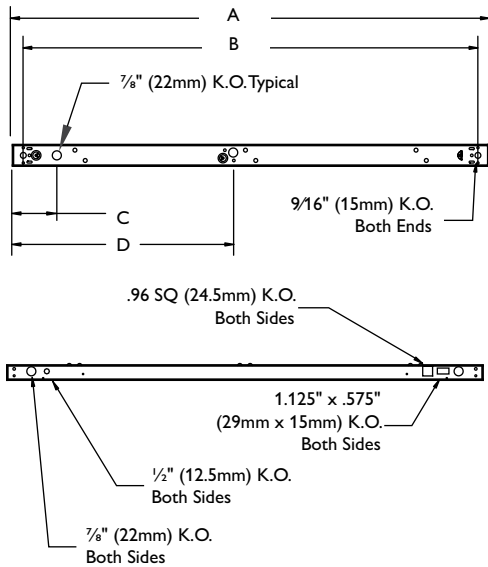
Materials: Chassis parts are die-formed heavy gauge cold rolled steel, 1/8" deep x 2" channel width.

Finish: Chassis exterior—phosphate undercoating, baked white acrylic matte high reflectance paint finish.

Electrical: HPF, thermally protected class "P" ballast. If K.O. is within 3" of ballast, use wire suitable for at least 90°C.

Labels: Listed by CSA.

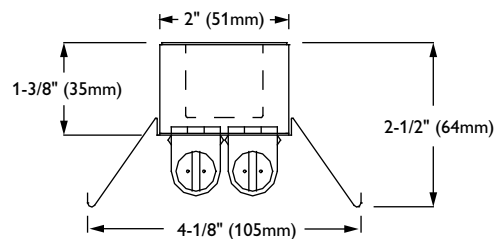
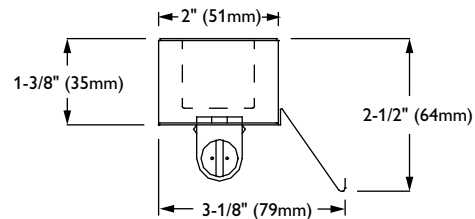
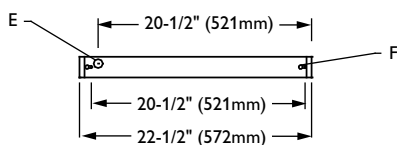
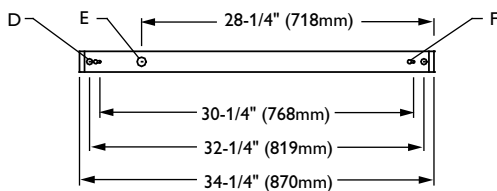
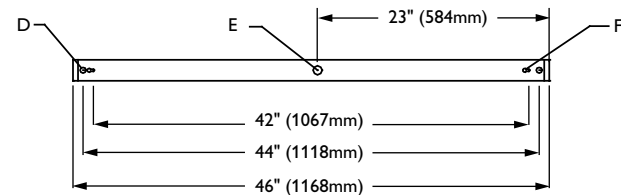
SV Strip Dimensions



Nominal Length	A	B	C	D
92"	92 1/4" (2343mm)	90 3/16" (2291mm)	4 1/4" (108mm)	44 7/16" (1129mm)
46"	46 5/8" (1172mm)	44 1/16" (1119mm)	4 1/4" (108mm)	21 3/8" (543mm)
34"	34 1/4" (870mm)	32 3/16" (818mm)	4 1/4" (108mm)	N/A
22"	22 7/16" (570mm)	20 3/8" (518mm)	4 1/4" (108mm)	N/A

SV Reflector (SV5R) Dimensions

D: 9/16" (14mm) K.O.
E: 7/8" (22mm) K.O.
F: CARRIAGE SLOT



SV SERIES T5 STRIP WITH REFLECTOR OPTIONS

Photometry

SV T5 Strip 2 Lamp T5

Efficiency – 93.4%

LER – 73

Catalog No. SV4S228-120PG Test No. LSC9376 S/MH 1.5 Lamp Type 28WTS Lumens/Lamp 2610 Ballast Factor 1.00 Input Watts 67 Comparative yearly lighting energy cost per 1000 lumens – \$3.24 based on 3000 hrs. and \$.08 pwr KWH.	Candlepower				Light Distribution				Average Luminance					
	Angle	End	45	Cross	Degrees	Lumens	% Lamp	% Luminaire	Angle	End	45°	Cross		
	0	942	942	942	0-30	770	14.8	15.8	45	14368	17126	18802		
	5	953	940	930	0-40	1308	25.1	26.8	55	13506	18429	20914		
	15	916	943	939	0-60	2551	48.9	52.2	65	12513	20540	23194		
	25	849	907	946	0-90	3942	75.5	80.6	75	10712	23593	26970		
	35	751	864	936	0-180	4888	93.6	100.0	85	8208	29606	34882		
	45	632	811	914	Coefficients of Utilization									
	55	483	731	860	EFFECTIVE FLOOR CAVITY REFLECTANCE 20 PER (pfc=0.20)									
	65	331	632	751	pcc	80			70			50		
	75	175	494	611	pw	70	50	30	70	50	30	50	30	
	85	47	310	427	RCR									
	95	19	294	427	0	107	107	107	103	103	103	93	93	
	105	19	263	427	1	94	89	83	90	84	81	78	73	
	115	17	208	349	2	84	76	68	81	72	66	67	60	
	125	10	136	247	3	77	66	56	72	63	55	57	51	
	135	22	78	156	4	69	57	48	66	55	46	51	44	
145	11	26	73	5	64	51	41	60	48	40	45	38		
155	19	9	6	6	58	46	36	56	44	35	40	33		
165	26	11	1	7	54	40	33	51	39	30	35	28		
175	27	11	4	8	50	36	28	47	35	28	33	26		
				9	46	34	26	45	33	25	29	23		
				10	44	30	23	41	29	23	28	22		

SV T5 Strip with Symmetric White Reflector

Efficiency – 78.8%

LER – 60

Catalog No. SV4S254-UNVPG with SV5R1W4SSLD Test No. LSC9465 S/MH 1.5 Lamp Type 54WT5HO Lumens/Lamp 4400 Ballast Factor 1.00 Input Watts 115 Comparative yearly lighting energy cost per 1000 lumens – \$4.00 based on 3000 hrs. and \$.08 pwr KWH.	Candlepower				Light Distribution				Average Luminance					
	Angle	End	45	Cross	Degrees	Lumens	% Lamp	% Luminaire	Angle	End	45°	Cross		
	0	2023	2023	2023	0-30	1636	18.6	23.6	45	15982	17180	18212		
	5	2027	2026	2010	0-40	2753	31.3	39.6	55	15449	17566	18032		
	10	2004	2025	2022	0-60	5206	59.2	75.0	65	14650	16997	15866		
	15	1964	1998	2019	0-90	6944	78.9	100.0	75	13004	13403	11403		
	20	1902	1963	1988	85	7015	5044	3325	Coefficients of Utilization					
	25	1829	1911	1960	EFFECTIVE FLOOR CAVITY REFLECTANCE 20 PER (pfc=0.20)									
	30	1739	1848	1942	pcc	80			70			50		
	35	1636	1789	1906	pw	70	50	30	70	50	30	50	30	
	40	1523	1727	1862	RCR									
	45	1385	1636	1787	0	93	93	93	92	92	92	88	88	
	50	1242	1536	1671	1	84	81	78	82	79	76	76	72	
	55	1092	1416	1514	2	77	69	64	75	68	63	66	60	
	60	934	1280	1306	3	69	60	54	68	59	53	56	52	
	65	770	1080	1067	4	64	54	46	61	52	46	50	45	
	70	609	857	814	5	57	47	40	56	46	40	45	39	
75	427	597	553	6	54	42	34	52	41	34	40	34		
80	250	343	313	7	50	38	30	47	38	30	36	29		
85	85	122	94	8	46	34	28	45	34	28	33	27		
				9	42	32	25	41	30	25	30	25		
				10	40	28	23	39	28	23	28	23		

SV T5 Strip with Asymmetric White Reflector

Efficiency – 86.3%

LER – 64

Catalog No. SV4S254-UNVPG with SV5R1W4ASLD Test No. LSC9467 S/MH 1.6 Lamp Type 54WT5HO Lumens/Lamp 4400 Ballast Factor 1.00 Input Watts 118 Comparative yearly lighting energy cost per 1000 lumens – \$3.75 based on 3000 hrs. and \$.08 pwr KWH.	Candlepower						Light Distribution				Average Luminance					
	Angle	End	45	Cross	Back-45	Back-Cross	Degrees	Lumens	% Lamp	% Luminaire	Angle	End	45°	Cross		
	0	1844	1844	1844	1844	1844	0-30	1499	17.0	19.7	45	20724	23190	19429		
	5	1854	1865	1843	1831	1801	0-40	2528	28.7	33.2	55	21212	24367	18563		
	15	1796	1890	1900	1776	1756	0-60	4833	54.9	63.5	65	21154	22968	17725		
	25	1677	1842	1926	1669	1674	0-90	6911	78.5	90.8	75	21229	18167	16330		
	35	1500	1800	1911	1516	1608	0-180	7613	86.5	100.0	85	20393	3969	12898		
	45	1271	1675	1825	1362	1517	Coefficients of Utilization									
	55	985	1496	1682	1180	1293	EFFECTIVE FLOOR CAVITY REFLECTANCE 20 PER (pfc=0.20)									
	65	693	1254	1441	907	898	pcc	80			70			50		
	75	391	977	1165	467	435	pw	70	50	30	70	50	30	50	30	
	85	104	601	815	64	32	RCR									
	95	26	473	668	16	0	0	101	101	101	97	97	97	92	92	
	105	23	392	644	8	0	1	91	85	81	86	82	79	78	75	
	115	29	276	487	15	0	2	81	72	67	78	70	65	67	61	
	125	27	156	324	15	0	3	73	64	56	70	61	55	57	52	
	135	20	43	157	6	0	4	67	56	47	64	54	46	51	44	
145	33	6	37	19	0	5	60	50	40	58	47	40	45	39		
155	26	22	0	22	0	6	56	44	35	54	42	34	40	34		
165	28	25	2	24	3	7	52	40	32	50	39	30	36	29		
175	31	20	2	25	0	8	47	35	28	46	34	28	34	27		
						9	45	33	26	42	32	25	30	23		
						10	41	30	23	40	29	23	28	23		

SV SERIES T5 STRIP WITH REFLECTOR OPTIONS

Options/Accessories



Stem and Canopy Sets:

Suspends luminaire 12", 18", 24", 36", or 48" from surface. (Two per luminaire is recommended. For 34" and 46" STB Strip only)

Catalog Number:

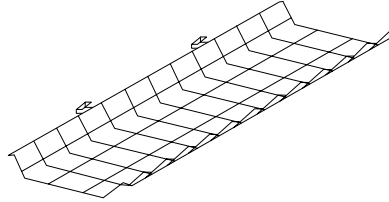
SV5F12 (12"), **SV5F18** (18"),
SV5F24 (24"), **SV5F36** (36"),
SV5F48 (48").



Chain Hanger Kit:

Includes two 5" heavy duty link chains with sturdy "V" hooks for fixture suspension. (34" and 46" STB Strip only)

Catalog Number: **EE9HC**



Wire Guard:

Galvanized wire guard. Catalog number:

Catalog Number

SV5GXG3 For SV Strip T5 34"
SV5GXG4 For SV Strip T5 46"
SV5G1W3S For SV5R Symmetric 34"
SV5G1W4S For SV5R Symmetric 46"

Convenience Outlet:

Suffix: **CO**

Rocker Switch:

Suffix: **H**



© 2014 Koninklijke Philips N.V. All rights reserved.
Specifications are subject to change without notice.
www.philips.com/luminaires

SV Strip T5 02/14 page 4 of 4

Philips Lighting
North America Corporation
200 Franklin Square Drive
Somerset, NJ 08873
Phone: 855-486-2216

Philips Lighting Company
281 Hillmount Road
Markham ON, Canada L6C 2S3
Phone: 800-668-9008