

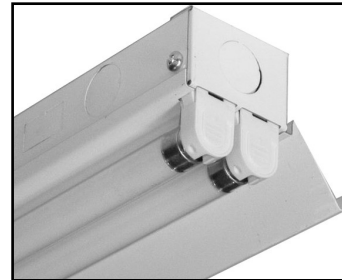
# Asymmetric Reflector **SV5R Series**

Page 1 of 2

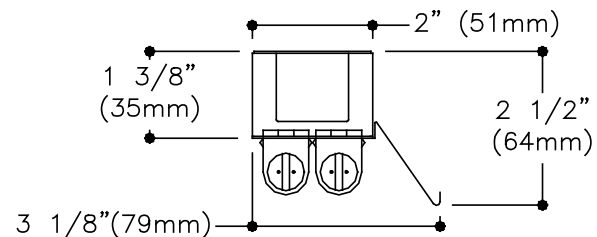
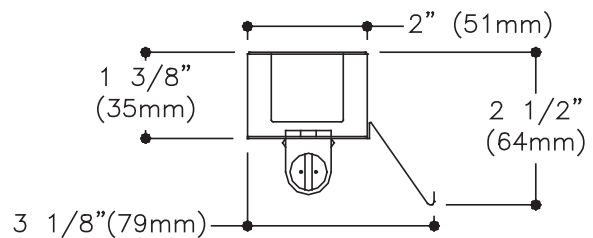
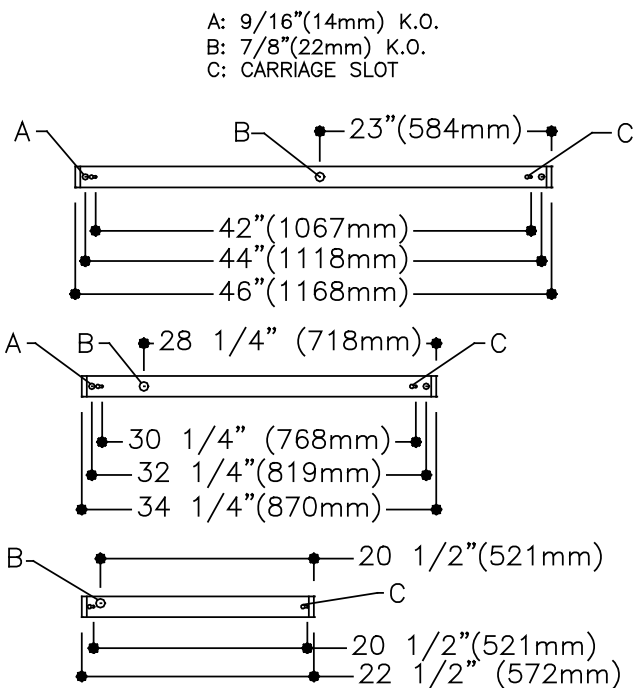
White or Specular for 1 or 2 Lamp T5 Strip, 22", 34" or 46" Length

## Features

- Only 1 3/8" deep.
- Installation on regular SV T5 strip, 1 or 2 lamps.
- Available in white or high reflectivity specular finish.



## Dimensions



## Job Information

## Type:

Job Name:

Cat. No.:

Lamp(s):

Volts/Ballast:

Lightolier a Genlyte Thomas Company

www.lightolier.com

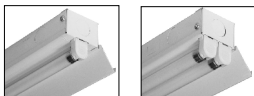
Technical Information: (978) 657-7600 • Fax (978) 658-0595

631 Airport Road, Fall River, MA 02720 • (508) 679-8131 • Fax (508) 674-4710

We reserve the right to change details of design, materials and finish.

Copyright 2002 Lightolier

Section 3A/Folio H120-20



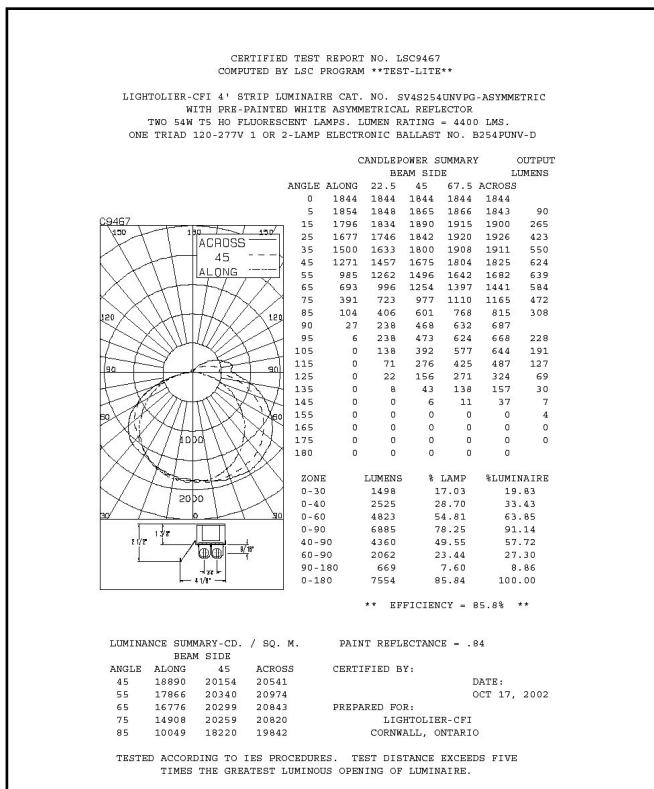
# Asymmetric Reflector **SV5R Series**

Page 2 of 2

White or Specular for 1 or 2 Lamp T5 Strip, 22", 34" or 46" Lengths

## Photometry

Model No. SV5S254UNVPG/SV5R1W4ASLD



LIGHTING SCIENCES CANADA LTD.  
440 PHILLIP ST., UNIT 19  
WATERLOO, ONTARIO

CERTIFIED TEST REPORT NO. LSC9467  
COMPUTED BY LSC PROGRAM \*\*TEST-LITE\*\*

LIGHTOLIER-CFI 4' STRIP LUMINAIRE CAT. NO. SV4S254UNVPG-ASYMMETRIC  
WITH PRE-PAINTED WHITE ASYMMETRICAL REFLECTOR  
TWO 54W T5 HO FLUORESCENT LAMPS. LUMEN RATING = 4400 LMS.  
ONE TRIAD 120-277V 1 OR 2-LAMP ELECTRONIC BALLAST NO. B254PUNV-D

COEFFICIENTS OF UTILIZATION  
ZONAL CAVITY METHOD  
EFFECTIVE FLOOR CAVITY REFLECTANCE = .20

CC WALL	80	70	50	30	10	0
70	50	30	10	70	50	30
30	10	70	50	30	10	70
10	70	50	30	10	70	50
0	70	50	30	10	70	50

RCR

0	1.011	.011	.011	.01	.97	.97	.97	.97	.91	.91	.91	.86	.86	.86	.81	.81	.81	.78
1	.91	.86	.82	.79	.88	.84	.80	.77	.79	.76	.73	.74	.71	.69	.69	.68	.66	.63
2	.82	.75	.69	.63	.79	.72	.67	.62	.68	.63	.59	.64	.60	.57	.60	.57	.54	.52
3	.75	.65	.58	.52	.72	.63	.57	.51	.60	.54	.49	.56	.51	.47	.53	.49	.46	.43
4	.68	.57	.50	.44	.66	.56	.49	.43	.53	.46	.42	.50	.44	.40	.47	.42	.39	.37
5	.62	.50	.42	.36	.59	.49	.41	.36	.46	.40	.35	.44	.38	.34	.41	.36	.32	.30
6	.57	.45	.37	.31	.54	.43	.36	.31	.41	.35	.30	.39	.33	.29	.37	.32	.28	.26
7	.52	.40	.32	.27	.50	.39	.32	.26	.37	.30	.26	.35	.29	.25	.33	.28	.24	.22
8	.48	.36	.28	.23	.46	.35	.28	.23	.33	.27	.22	.31	.26	.21	.30	.25	.21	.19
9	.44	.32	.25	.20	.42	.31	.24	.19	.30	.23	.19	.28	.22	.18	.27	.22	.18	.16
10	.41	.29	.22	.17	.40	.28	.22	.17	.27	.21	.17	.26	.20	.16	.24	.19	.16	.14

DETERMINED IN ACCORDANCE WITH CURRENT IES PUBLISHED PROCEDURES  
LUMINAIRE INPUT WATTS = 118.1  
LABORATORY RESULT MAY NOT BE REPRESENTATIVE OF FIELD PERFORMANCE.  
BALLAST FACTORS HAVE NOT BEEN APPLIED.

## Ordering Information

Explanation of Catalog Number. Example: SV5R1W4ASLD

**SV5R**

Reflector Type

Reflector for SVT5 Strip  
(order strip separately)

**1**

Reflector Style

Finish

W = White  
S = Specular

Reflector Length

2 = 22"  
3 = 34"  
4 = 46"

**A**

Light Distribution

A = Asymmetric

Reflector Style:

SLD = Solid  
SLT = Slotted (white only)  
PER = Micro-perforated (white only)

## Specifications

**Materials:** Die-formed heavy gauge cold rolled steel.

**Reflector:** White - phosphate undercoating, baked white acrylic matte high reflectance paint finish. **Specular** - Reflective plane made of high purity aluminium, total reflectivity of 95% without iridescence.

## Job Information

Type:

Lightolier a Genlyte Thomas Company

www.lightolier.com

Technical Information: (978) 657-7600 • Fax (978) 658-0595

631 Airport Road, Fall River, MA 02720 • (508) 679-8131 • Fax (508) 674-4710

We reserve the right to change details of design, materials and finish.

Copyright 2002 Lightolier

Section 3A/Folio H120-20

**LIGHTOLIER**