

# Juno®

## TRAC 12

Project: \_\_\_\_\_

Fixture Type: \_\_\_\_\_

Location: \_\_\_\_\_

Contact/Phone: \_\_\_\_\_

Miniature Low Voltage Trac System

### MR16 SPOTLIGHTS

**TL109, TL116, TLP116, TL117, TL143,  
TL191, TL196 and TL296**

#### PRODUCT DESCRIPTION

A selection of distinctive miniature MR16 quartz lampholders provides high intensity display and accent lighting using small scale, high-styled trac lights.

**Socket** Ceramic bi-pin.

**Aiming** 90° vertical aiming capability and 358° rotation.

**Lens** Glass lens included with lampholder.

**Labels** UL listed, CSA certified.

Product specifications subject to change without notice.

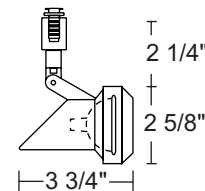
#### Low Voltage MR16 Slant

Catalog Number	Description	Finish	Lamp
TL109WH	Slant	White	20-50W MR16, 12V or 24V
TL109BL	Slant	Black	20-50W MR16, 12V or 24V

#### ACCESSORIES

Cat. No.	Description	Cat. No.	Description	Cat. No.	Description
T74BL	Black Barn Doors	T556BL	Black Eyebrow	T558BL	Black Snoot
T551-5	Color Filters/Lenses	T557	Prismatic Spread Lens	T559	Linear Spread Lens
T5501-18	Dichroic Lenses	T5520	Diffuse Spread Lens	T5521	Uniformity Lens
T5522	UV Filter Lens	T5559BL	Hexcell Louver		

See specification sheet [D1.2.2](#) for details.



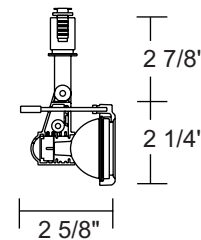
#### Low Voltage MR16 Delta 200

Catalog Number	Description	Finish	Lamp
TL116WH	Delta 200	White	50W MR16, 12V or 24V
TL116BL	Delta 200	Black	50W MR16, 12V or 24V
TL116SL	Delta 200	Silver	50W MR16, 12V or 24V

#### ACCESSORIES

Cat. No.	Description	Cat. No.	Description	Cat. No.	Description
T74BL	Black Barn Doors	T557	Prismatic Spread Lens	T558BL	Black Snoot
T551-5	Color Filters/Lenses	T559	Linear Spread Lens	T5501-18	Dichroic Lenses
T5520	Diffuse Spread Lens	T5521	Uniformity Lens	T5522	UV Filter Lens
T5559BL	Hexcell Louver				

See specification sheet [D1.2.2](#) for details.



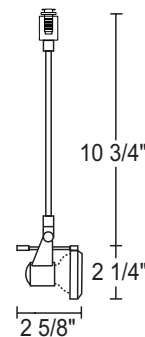
#### Low Voltage MR16 Delta 200

Catalog Number	Description	Finish	Lamp
TLP116WH	Delta 200 Pendant	White	20W-50W MR16, 12V or 24V
TLP116BL	Delta 200 Pendant	Black	20W-50W MR16, 12V or 24V
TLP116SL	Delta 200 Pendant	Silver	20W-50W MR16, 12V or 24V

#### ACCESSORIES

Cat. No.	Description	Cat. No.	Description	Cat. No.	Description
T74BL	Black Barn Doors	T557	Prismatic Spread Lens	T558BL	Black Snoot
T551-5	Color Filters/Lenses	T559	Linear Spread Lens	T5501-18	Dichroic Lenses
T5520	Diffuse Spread Lens	T5521	Uniformity Lens	T5522	UV Filter Lens
T5559BL	Hexcell Louver				

See specification sheet [D1.2.2](#) for details.



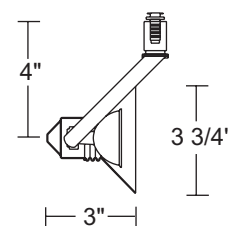
#### Low Voltage MR16 Flyback

Catalog Number	Description	Finish	Lamp
TL117WH	Flyback	White	50W MR16CG, 12V or 24V
TL117BL	Flyback	Black	50W MR16CG, 12V or 24V
TL117SC	Flyback	Satin Chrome	50W MR16CG, 12V or 24V

#### ACCESSORIES

Cat. No.	Description	Cat. No.	Description	Cat. No.	Description
T7400SA, BL	Accessory Holder	T7477	Prismatic Spread Lens	T7478	Linear Spread Lens
T741-6	Color Filters/Lenses	T7420	Diffuse Spread Lens	T7421	Uniformity Lens
T7401-18	Dichroic Lenses	T7459BL	Hexcell Louver	T7422	UV Filter Lens

See specification sheet [D1.2.2](#) for details.



**TRAC 12**

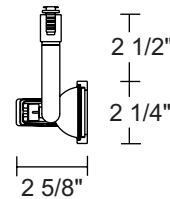
Miniature Low Voltage Trac System

**MR16 SPOTLIGHTS****TL109, TL116, TLP116, TL117, TL143, TL191, TL196 and TL296****Low Voltage MR16 Notchback**

Catalog Number	Description	Finish	Lamp
TL143WH	Notchback	White	20-50W MR16, 12V or 24V
TL143BL	Notchback	Black	20-50W MR16, 12V or 24V

**ACCESSORIES**

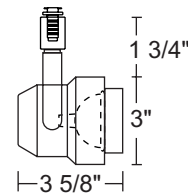
Cat. No.	Description	Cat. No.	Description	Cat. No.	Description
T551-5	Color Filters	T557	Prismatic Spread Lens	T559	Linear Spread Lens
T5501-18	Dichroic Lenses	T5520	Diffuse Spread Lens	T5521	Uniformity Lens
T5522	UV Filter Lens	T5559BL	Hexcell Louver		

See specification sheet [D1.2.2](#) for details.**Low Voltage MR16 Studio II**

Catalog Number	Description	Finish	Lamp
TL191WH	Studio II	White	20-50W MR16, 12V or 24V
TL191BL	Studio II	Black	20-50W MR16, 12V or 24V
TL191SL	Studio II	Silver	20-50W MR16, 12V or 24V

**ACCESSORIES**

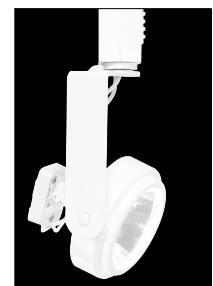
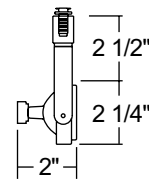
Cat. No.	Description	Cat. No.	Description	Cat. No.	Description
T551-5	Color Filters/Lenses	T557	Prismatic Spread Lens	T559	Linear Spread Lens
T5501-18	Dichroic Lenses	T5520	Diffuse Spread Lens	T5521	Uniformity Lens
T5522	UV Filter Lens	T5559BL	Hexcell Louver		

See specification sheet [D1.2.2](#) for details.**Low Voltage MR16 Gimbal Ring**

Catalog Number	Description	Finish	Lamp
TL196WH	Gimbal Ring	White	20-50W MR16, 12V or 24V
TL196BL	Gimbal Ring	Black	20-50W MR16, 12V or 24V

**ACCESSORIES**

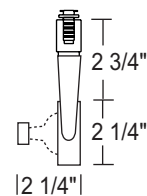
Cat. No.	Description	Cat. No.	Description	Cat. No.	Description
T551-5	Color Filters	T557	Prismatic Spread Lens	T559	Linear Spread Lens
T5501-18	Dichroic Lenses	T5520	Diffuse Spread Lens	T5521	Uniformity Lens
T5522	UV Filter Lens	T5559BL	Hexcell Louver		

See specification sheet [D1.2.2](#) for details.**Low Voltage MR16 Gimbal Ring**

Catalog Number	Description	Finish	Lamp
TL296WH	Gimbal Ring	White	20-50W MR16, 12V or 24V
TL296BL	Gimbal Ring	Black	20-50W MR16, 12V or 24V
TL296SC	Gimbal Ring	Satin Chrome	20-50W MR16, 12V or 24V

**ACCESSORIES**

Cat. No.	Description	Cat. No.	Description	Cat. No.	Description
T551-5	Color Filters/Lenses	T557	Prismatic Spread Lens	T559	Linear Spread Lens
T5501-18	Dichroic Lenses	T5520	Diffuse Spread Lens	T5521	Uniformity Lens
T5522	UV Filter Lens	T5559BL	Hexcell Louver		

See specification sheet [D1.2.2](#) for details.

JUNO LIGHTING GROUP  
by Schneider Electric

1300 S. Wolf Road • Des Plaines, IL 60018 • Phone (847) 827-9880 • Fax (847) 827-2925  
220 Chrysler Drive • Brampton, Ontario • Canada L6S 6B6 • Phone (905) 792-7335 • Fax (905) 792-0064  
Visit us at [www.junolightinggroup.com](http://www.junolightinggroup.com)

Printed in U.S.A. ©2009 Juno Lighting, LLC.