



# TRAC-MASTER®

Low Voltage

## SLANT SERIES

T805, T807 and T809

Project: \_\_\_\_\_

Fixture Type: \_\_\_\_\_

Location: \_\_\_\_\_

Contact/Phone: \_\_\_\_\_

### PRODUCT DESCRIPTION

The angular design cleverly disguises the integral electronic transformer. The slant transformer allows 90° vertical aiming capability in both directions and 358° horizontal rotation. MR16 lamps provide tight beam control for dramatic lighting applications.

**Socket** Ceramic bi-pin.

**Aiming** 90° vertical aiming capability in both directions and 358° horizontal rotation.

**Transformer** 50VA 12V solid state electronic transformer, integral to fixture • Slant design • Dimmable.

**Adapter** Copper alloy contacts provide precise spring action - no arcing and will not take a set • True, positive electrical ground  
 • On/off switch included • Patented embossed polarity arrows on bottom of adapter  
 • Spring-loaded positive latch with embossed polarity arrows secures trac light to trac • "Pull-up" contact to up position for two-circuit application.

**Labels** UL listed, CSA certified.

Product specifications subject to change without notice.



### Low Voltage MR16

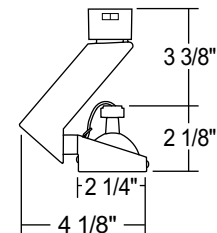
**Construction** Polycarbonate transformer housing with die-formed metal lamp housing.

Catalog Number	Description	Finish	Lamp
T805WH	Gimbal Ring	White	20-50W MR16
T805BL	Gimbal Ring	Black	20-50W MR16

### ACCESSORIES

Cat. No.	Description	Cat. No.	Description	Cat. No.	Description
T551-5	Color Filters	T557	Prismatic Spread Lens	T559	Linear Spread Lens
T5501-18	Dichroic Filters	T5520	Diffusion Lens	T5521	Uniformity Lens
T5522	UV Filter	T5559BL	Hexcell Louver		

See specification sheet [D1.2.2](#) for details.



# TRAC-MASTER®

Low Voltage

## SLANT SERIES

T805, T807 and T809

### PRODUCT DESCRIPTION

The angular design cleverly disguises the integral electronic transformer. The slant transformer allows 90° vertical aiming capability in both directions and 358° horizontal rotation. MR16 lamps provide tight beam control for dramatic lighting applications.

**Socket** Ceramic bi-pin.

**Aiming** 90° vertical aiming capability in both directions and 358° horizontal rotation.

**Transformer** 50VA 12V solid state electronic transformer, integral to fixture • Slant design • Dimmable.

**Adapter** Copper alloy contacts provide precise spring action -no arcing and will not take a set • True, positive electrical ground • On/off switch included • Patented embossed polarity arrows on bottom of adapter • Spring-loaded positive latch with embossed polarity arrows secures trac light to trac • "Pull-up" contact to up position for two-circuit application.

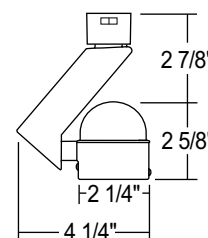
**Labels** UL listed, CSA certified.

Product specifications subject to change without notice.

### Low Voltage MR16

**Construction** Polycarbonate transformer housing with die-formed metal lamp housing and metal mesh back.

Catalog Number	Description	Finish	Lamp
T807WH	Round Back Mesh	White	20-50W MR16
T807BL	Round Back Mesh	Black	20-50W MR16



#### ACCESSORIES

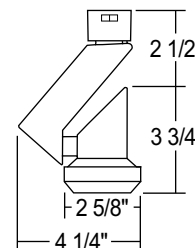
Cat. No.	Description	Cat. No.	Description	Cat. No.	Description
T551-5	Color Filters	T557	Prismatic Spread Lens	T559	Linear Spread Lens
T5501-18	Dichroic Filters	T5520	Diffusion Lens	T5521	Uniformity Lens
T5522	UV Filter	T5559BL	Hexcell Louver		

See specification sheet [D1.2.2](#) for details.

### Low Voltage MR16

**Construction** Polycarbonate transformer housing with vented die-cast aluminum lamp housing.

Catalog Number	Description	Finish	Lamp
T809WH	Step Cylinder	White	20-50W MR16
T809BL	Step Cylinder	Black	20-50W MR16



#### ACCESSORIES

Cat. No.	Description	Cat. No.	Description	Cat. No.	Description
T558BL	Black Snoot	T556BL	Black Eyebrow	T557	Prismatic Spread Lens
T559	Linear Spread Lens	T551-5	Color Filters	T5501-18	Dichroic Filters
T5520	Diffusion Lens	T5521	Uniformity Lens	T5522	UV Filter
T5559BL	Hexcell Louver				

See Specification sheet [D1.2.2](#) for details.



1300 S. Wolf Road • Des Plaines, IL 60018 • Phone (847) 827-9880 • Fax (847) 827-2925  
 220 Chrysler Drive • Brampton, Ontario • Canada L6S 6B6 • Phone (905) 792-7335 • Fax (905) 792-0064  
 Visit us at [www.junolightinggroup.com](http://www.junolightinggroup.com)

Printed in U.S.A. ©2010 Juno Lighting, LLC.