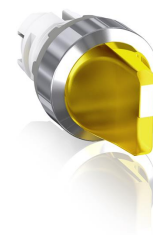


M2SS2-31Y



M2SS2-31Y Selector Switch

General Information

Extended Product Type	M2SS2-31Y
Product ID	1SFA611201R3103
EAN	7320500285183
Catalog Description	M2SS2-31Y Selector Switch
Long Description	Modular Selector Switch - 2-Pos Maintained - Short handle - Yellow - Illuminated - Chrome metal - No contact block

Ordering

EAN	7320500285183
Minimum Order Quantity	10 piece
Customs Tariff Number	8536501999

Dimensions

Product Net Width	0.048 m
Product Net Height	0.03 m
Product Net Depth / Length	0.05 m
Product Net Weight	0.034 kg

Container Information

Package Level 1 Units	1 piece
Package Level 1 Width	0.11 m
Package Level 1 Height	0.03 m
Package Level 1 Depth / Length	0.15 m
Package Level 1 Gross Weight	0.034 kg
Package Level 1 EAN	7320500285183

Environmental

Ambient Air Temperature	Storage -30 ... +85 °C Operation -25 ... +70 °C
RoHS Status	Following EU Directive 2002/95/EC August 18, 2005 and amendment

Additional Information

Actuator Type	Short handle
Bezel Material	Chrome metal
Block	No contact block
Color	Yellow
Degree of Protection	Front IP66 Terminals IP20
Function	Maintained
Illumination	Illuminated
Maintained Positions	A, C
Mechanical Durability	0.5 million
Mounting Position	Horizontally mounted
Product Main Type	M2SS2
Product Name	Selector Switch
Product Range	Modular
Product Type	M2SS
RoHS Date	0635 4
Sub-Function	2-position

Certificates and Declarations (Document Number)

Data Sheet, Technical Information	1SFC151005C0201
Declaration of Conformity - CE	1SFA1-83
Environmental Information	1SFC151010D0201
Instructions and Manuals	1SFC151005C0201
RoHS Information	1SFC151011D0203

Classifications

ETIM 4	EC002024 - Accessories for control circuit devices
ETIM 5	EC000222 - Front element for selector switch
ETIM 6	EC000222 - Front element for selector switch
ETIM 7	EC000222 - Front element for selector switch
Object Classification Code	S
UNSPSC	39121500

Categories

Low Voltage Products and Systems → Control Products → Pilot Devices → Modular Plastic Range

