

SLC-034R

Description

In-floor anodized aluminum channel that comes complete with two grey endcaps and a 3mm thick opal polycarbonate lens.

Extra clips and endcaps available by request.

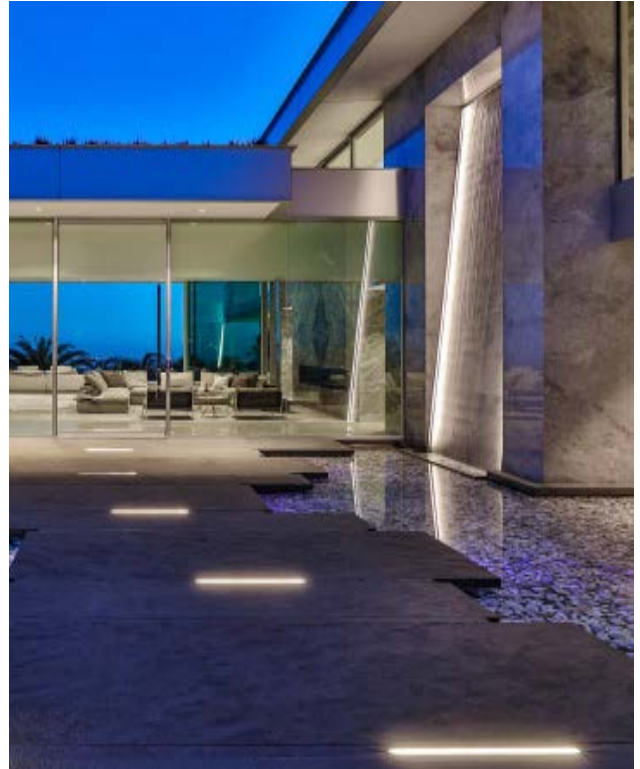
Specifications

- Channel : Anodized aluminum extrusion
- Lens : 3mm thick opal polycarbonate, high heat resistant, UV stable, shatter resistant
- Length : 8' (2.44 meters)

Walk over rated.

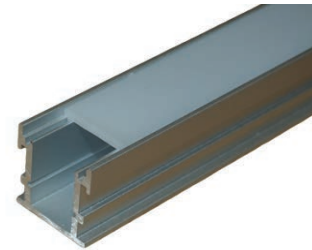
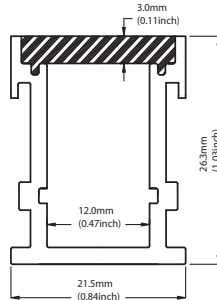
Applications

- Walk ways
- Driveways
- Exterior and, or Interior use
- Stairs
- Niches



Use outdoor ribbon for exterior or walk over applications.

Channel



End Caps

