

4000
LUMENS
31
WATT

5000
LUMENS
41
WATT

6000
LUMENS
48
WATT

8000
LUMENS
60
WATT

According to
DLC Test Results

According to
DLC Test Results



DIMENSION:
LENGTH: 44-1/2" (2X4, 1x4)
WIDTH: 20" (2X4)
DEPTH: 1-5/8"



* For list of qualified DLC fixture, please consult factory

APPLICATION:

Widely used in Factory, Office, Workshop, Warehouse, Restaurant, Logistics Center Exhibition Hall, Gymnasium, Supermarket, other places where need indoor illumination.

FEATURES:

- LED Troffer housing major material involve high quality steel, PC diffuser, it helps for cooling and uniformity lighting distribution
- 80% more energy saving compared with fluorescent lamp
- Classical shape and creative inspiration in its design
- Lighting the way to your site and maximum savings
- The Flexibility and Safety you Desire, varieties of color temperature and wattage

WARRANTY

- One year standard warranty on fixture
- 5 year limited warranty on LED

Ordering Information: Example: 24-OVHP-RTK-LED-5000L-DIM10-MVOLT-30K-80

FIXTURE SIZE	SERIES	TYPE	LUMENS	DIMMING	VOLTAGE	CCT	CRI	EMERGENCY
24 - 2' X 4'	OVHP-RTK-Oracle LED Troffer Retrofit Kit	LED	24-ORTK 4000L (4000 lumens) 5000L (4894 lumens) 6000L (6112 lumens) 8000L (8000 lumens)	DIM10 - 0-10V Dimming LUTH - Lutron Dimming DIMST - Step Dimming	MVOLT 347* * Consult factory for details	30K - (3000K) 35K - (3500K) 40K - (4000K) 50K - (5000K)	80	0-EMG-LED

CONTROL OPTIONS

EASYFIT by EnOcean

Controls Options to be Installed on the Fixture

Self-powered sensors and switches, combined with LED fixture controllers and a commissioning tool, permit easy configuration, intelligent local control, and seamless integration into building automation systems.

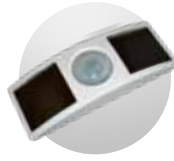


LEDRU
LED Relay Zone
Controller 0-10V



LEDDU
LED Zone
Controller 0-10V

Controls Provided by EnOcean



EOSCU
Occupancy Sensor
Ceiling Mount



EOSWU
Occupancy Sensor
Wall Mount



ELLSU
Daylight Sensor
Ceiling Mount



ESRPU/EDRPU
Wall Switches



LEVITON
Wall Switches
902 MHz category



NWC 300U
Navigan Wireless
Commissioner

legrand®

WATTSTOPPER®

Controls Installed on the Fixture



LMFC-011

Fixture Will be Shipped Legrand Wattstopper DLM Enabled with LMFC-011 Module Controller Installed on the Fixture. Fixtures will be compatible with Legrand Wattstopper DLM Load Controllers, DLM Sensors, DLM Switches, DLM Remote Control, and DLM Configuration tool.

Switches



LMSW-105 LMDM-101

Remote



LMRH-105

Configuration tool



LMCT-100-2

Plug Load Controllers



LMPL-101 LMPL-201

Sensors



LMDC-100 LMLS-400 LMLS-500



FD-301

Fixture Will be Shipped with Legrand Wattstopper FD-301 (Integrated Daylight Dimming Photosensor) installed and FS-PP-V2 Fixture Power Pack.



FS-PP-V2



FSP-202

Fixture Will be Shipped with Legrand Wattstopper FSP-202 (multi-level control based on motion and/or daylight contribution) installed.



FSP-212

Fixture Will be Shipped with Legrand Wattstopper FSP-212 (multi-level control based on motion and/or daylight contribution) installed.

LED

Control Options

CONTROL OPTIONS



Controls Installed on the Fixture



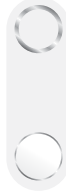
FCJS-010
Individual
Fixture Control

Fixture Will be Shipped LUTRON VIVE Enabled with LUTRON FCJS-010 0-10V Control Module Installed on the Fixture. Fixtures will be compatible with Lutron FC-SENSOR Occupancy/Daylight Sensor or FC-VSENSOR Vacancy/Daylight Sensor which can be Added in the Field for Remote Mounting. Fixture May be Controlled with any Vive control systems. Fixtures must be ordered with a 0-10V. Driver.



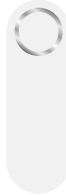
FCJS-ECO
Individual
Fixture Control

Fixture Will be Shipped LUTRON VIVE Enabled with LUTRON FCJS-ECO EcoSystem Control Module Installed on the Fixture. Fixtures will be compatible with Lutron FC-SENSOR Occupancy/Daylight Sensor or FC-VSENSOR Vacancy/Daylight Sensor which can be Added in the Field for Remote Mounting. Fixture May be Controlled with any Vive control systems. Fixtures must be ordered with a Lutron Driver.



DFCSJ-OEM-OCC

Fixture Will be Shipped LUTRON VIVE Enabled with DFCSJ-OEM-OCC* Vive Integral Fixture Control (with Sensing) Installed on the Fixture. Fixture May be Controlled with any Vive control systems. Fixtures must be ordered with a DMX or Lutron EcoSystem Driver



DFCSJ-OEM-RF

Fixture Will be Shipped LUTRON VIVE Enabled with LUTRON DFCSJ-OEM-RF* Vive Integral Fixture Control (RF Only) Installed on the Fixture. Fixture May be Controlled with any Vive control systems. Fixtures must be ordered with a DMX or Lutron EcoSystem Driver.

Controls Provided by Lutron



Vive Wireless Hub



DayLight
Sensor



Ceiling Mount
Occupancy/Daylight
Sensor



Ceiling Mount
Occupancy Sensor



Pico
Remote



Wall Mount
Switch



Wall Mount
Occupancy Sensor



Lutron App



Fixture will be shipped with Leviton ZL027-N0W power control module installed on the fixture. Fixtures will be compatible with Leviton ZL00J-D0W sensor control module which can be added in the field for remote mounting. Fixture must be controlled with Leviton Intellect Keypad Room Controller, or Leviton Neuron App.



ZL027-N0W
Power control module



ZL00J-D0W
Sensor control module

Leviton Keypad



ZLDNK-1W



ZLDNK-2W



ZLDNK-4W



ZLDNK-8W

Intellect™ Keypad Room
Controller (Required)

Leviton App



Neuron App

LED

Control Options

CONTROL OPTIONS



Philips EasySense sensors provide luminaire-level control with Occupancy sensing, Daylight harvesting, and Field task tuning.

Controls Installed on the Fixture



PHILIPS-XSR + SNS200

Fixture will be Shipped with EasySense SNS200 Sensor installed and PHILIPS-XSR driver. Fixture May Only be Controlled with Philips Field App or Wireless Switches.



SRB + SNS200

Fixture Will be Shipped with EasySense SNS200 Sensor installed and PHILIPS SRB Bridge. Fixture May Only be Controlled with Philips Field App or Wireless Switches or any 0-10V. Wall Box Dimmer.



PHILIPS-XSR + SNS200-CMP

Fixture will be Shipped Sensor Ready with PHILIPS-XSR driver and EasySense SNS200-CMP Sensor which is Included to be Remote Mounted. Fixture May Only be Controlled with Philips Field App or Wireless Switches



SRB + SNS200-CMP

Fixture Will be Shipped Sensor Ready with PHILIPS SRB Bridge and EasySense SNS200-CMP Sensor which is Included to be Remote Mounted. Fixture May Only be Controlled with Philips Field App or Wireless Switches or any 0-10V. Wall Box Dimmer.



SRB

Fixture will be Shipped Sensor Ready with SRB Bridge. Fixture will be Compatible with EasySense Sensor SNS200-CMP which can be Added in the Field for Remote Mounting. Fixture May Only be Controlled with Philips Field App or Wireless Switches or any 0-10V. Wall Box Dimmer.

Controls Provided by Philips



ZBT-S1AWH

ZBT-S2AWH

Illumra Wireless Switches



Philips Field App

LED

Control Options



Enlighted Smart Sensors features digital motion, ambient light, and temperature sensing, the device provides autonomous fixture-level control

Controls Installed on the Fixture



PHILIPS-XSR + FS-D22

Fixture Will be Shipped with Enlighted FS-D22 Two-wire sensor Sensor installed and PHILIPS-XSR driver. Fixture May be Controlled with Enlighted Gateway, Energy Manager or Enlighted Room Controller WS-2-00



CU-E3-1R + SU-4E-00

Fixture Will be Shipped with Enlighted SU-4E-00 Sensor installed and Enlighted CU-E3-1R Control Unit Power Pack. Fixture May be Controlled with Enlighted Gateway, Energy Manager or Enlighted Room Controller WS-2-00



CU-E3-1R

Fixture Will be Shipped Sensor Ready with Enlighted CU-E3-1R Control Unit Power Pack. Fixture will be compatible with Enlighted SU-4E-00 Sensor which can be Added in the Field Remote Mounting. Fixture May be Controlled with Enlighted Gateway, Energy Manager or Enlighted Room Controller WS-2-00



PHILIPS-XSR

Fixture Will be Shipped Sensor Ready with PHILIPS-XSR driver. Fixtures will be compatible with Enlighted CS-D2 Two-wire sensor which can be Added in the Field for Remote Mounting. Fixture May be Controlled with Enlighted Gateway, Energy Manager or Enlighted Room Controller WS-2-00.

Controls Provided by Enlighted



Gateway

Switch



Programmable with Laptop



PoE Network Switch



Energy Manager