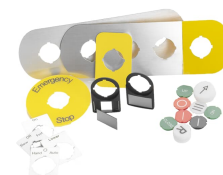


MA6-1042



MA6-1042 Legend Plate



General Information

Extended Product Type	MA6-1042
Product ID	1SFA611930R1042
EAN	7320500311257
Catalog Description	MA6-1042 Legend Plate
Long Description	15x27 mm, Insert to legend plate holder with text: Down

Ordering

E-Number (Norway)	4373149
E-Number (Sweden)	3705715
EAN	7320500311257
Minimum Order Quantity	10 piece
Customs Tariff Number	85389099

Dimensions

Product Net Width	0.027 m
Product Net Height	0.001 m
Product Net Depth / Length	0.015 m
Product Net Weight	0.001 kg

Container Information

Package Level 1 Units	10 piece
Package Level 1 Width	0.1 m
Package Level 1 Height	0.005 m
Package Level 1 Depth / Length	0.1 m
Package Level 1 Gross Weight	0.001 kg

Environmental

RoHS Status	Following EU Directive 2011/65/EU
-------------	-----------------------------------

Additional Information

Accessory Type	Legend plates
Color	Aluminum
Material	Laminate
Product Main Type	MA6
Product Name	Legend Plate
Product Range	Compact and Modular range
Product Type	MA
RoHS Date	0635 4
Suitable For	MP1 MP2 MP3 MP4 MPM1 MPM2 CP1 CP2 CP3 CP4 CPM3
Upper Button Text	Down

Certificates and Declarations (Document Number)

Data Sheet, Technical Information	1SFC151007C02__
Declaration of Conformity - CE	2CMT2019-005805
Environmental Information	1SFC151010D0201
Instructions and Manuals	1SFC151011M0201
RoHS Information	2CMT2019-005805

Classifications

ETIM 4	EC002024 - Accessories for control circuit devices
ETIM 5	EC000621 - Legend plate for control circuit devices
ETIM 6	EC000621 - Legend plate for control circuit devices
ETIM 7	EC000621 - Legend plate for control circuit devices
Object Classification Code	S
UNSPSC	39121512
WEEE Category	Product Not in WEEE Scope

Categories

Low Voltage Products and Systems → Control Products → Pilot Devices → Modular Plastic Range

