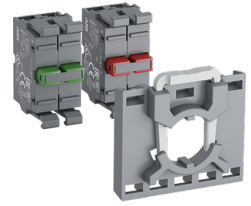


M3SSK3-301



M3SSK3-301 Selector Switch

General Information

Extended Product Type	M3SSK3-301
Product ID	1SFA611285R3001
EAN	7320500315927
Catalog Description	M3SSK3-301 Selector Switch
Long Description	Modular Selector Switch - 3-Pos Momentary, spring return from A and C to B - Key - Black/Key - Non-illuminated - Chrome metal - No contact block

Ordering

EAN	7320500315927
Minimum Order Quantity	10 piece
Customs Tariff Number	8536501999

Dimensions

Product Net Width	0.03 m
Product Net Height	0.03 m
Product Net Depth / Length	0.063 m
Product Net Weight	0.042 kg

Container Information

Package Level 1 Units	1 piece
Package Level 1 Width	0.11 m
Package Level 1 Height	0.03 m
Package Level 1 Depth / Length	0.15 m
Package Level 1 Gross Weight	0.042 kg
Package Level 1 EAN	7320500315927

Environmental

RoHS Status	Following EU Directive 2011/65/EU
-------------	-----------------------------------

Additional Information

Actuator Type	Key
Bezel Material	Chrome Metal
Block	No contact block
Color	Black/Key
Function	Momentary
Illumination	Non-illuminated
Key Code	Key code 71
Key Removal Positions	Position B Only
Mechanical Durability	0.5 million
Mounting Position	Horizontally mounted
Product Main Type	M3SSK3
Product Name	Selector Switch
Product Range	Modular
Product Type	M3SSK
RoHS Date	0635 4
Spring Return From	A and C to B
Sub-Function	3-position

Certificates and Declarations (Document Number)

Data Sheet, Technical Information	1SFC151007C02__
Declaration of Conformity - CE	2CMT2015-005452
Environmental Information	1SFC151010D0201
Instructions and Manuals	1SFC151011M0201
RoHS Information	2CMT2015-005452

Classifications

ETIM 4	EC002024 - Accessories for control circuit devices
ETIM 5	EC000222 - Front element for selector switch
ETIM 6	EC000222 - Front element for selector switch
ETIM 7	EC000222 - Front element for selector switch
Object Classification Code	S
UNSPSC	39121500
WEEE Category	Product Not in WEEE Scope

Categories

Low Voltage Products and Systems → Control Products → Pilot Devices → Modular Plastic Range

