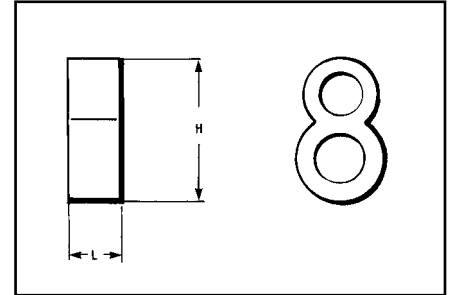


TYPE YGHR-C

HYTAIL™

High Strength
Irreversible
Compression Ground Rod Tap
Connectors



High torque strength ground rod connectors. Accommodates a wide range of copper conductors to ground rod. UL467 Listed. Acceptable for direct burial in earth or concrete. Prefilled with PENETROX™ compound and strip sealed.



IEEE-837



Catalog Number	H	B
YGHR26C12	1.94" [49.3]	.88" [22.4]
YGHR26C58	1.97" [50.0]	
YGHR26C34	2.19" [55.6]	
YGHR26C100	2.55" [64.8]	
YGHR29C12	1.94" [49.3]	
YGHR29C58	2.14" [54.4]	
YGHR29C34	2.19" [55.6]	
YGHR29C100	2.45" [62.2]	
YGHR34C58	2.14" [54.4]	
YGHR34C34	2.44" [62.0]	
YGHR34C100	2.70" [68.6]	

Catalog Number	Commercial Copper Cable Range	Nominal Ground Rod Dia.	Installation Tools, Die Set Catalog Number (Number of Crimps)			
			PAT750/Y750/Y35/Y39 ①	Y45 HYPRESS ①	Y46 HYPRESS ①	
YGHR26C12	#2 Str. (.292 Dia.) thru 2/0 Str. (.419 Dia.)	1/2" [12.7]	U1011 (2) ④ PU998 (1)	S1012 (2) ④	P1011 (2) ④ PU998 (1) ③	
YGHR26C58		5/8" [15.9]		PU998 (1) ②		
YGHR26C34		3/4" [19.0]		S1011 (2) S1012 (2) PU998 (1)		
YGHR26C100*	1" [25.4]	S1012 (2) ④				
YGHR29C12	#4/0 Str. (.528 Dia.) thru 250 kcmil (.575 Dia.)	1/2" [12.7]				
YGHR29C58		5/8" [15.9]		PU998 (1) ②		
YGHR29C34		3/4" [19.0]		S1011 (2) S1012 (2) ④ PU998 (1)		
YGHR29C100*	1" [25.4]	1" [25.4]		S1012 (2) ④ PU998 (1) ②		
YGHR34C58	300 kcmil (.630 Dia.) thru 500 kcmil (.813 Dia.)	5/8" [15.9]				
YGHR34C34*		3/4" [19.0]		S1012 (2) ④ PU998 (1) ②		
YGHR34C100*		1" [25.4]		S1011 (2)		

NOTES:

- The catalog numbers shown are for unplated copper connectors for use on copper clad or stainless steel ground rod. To order electro-tin plated connectors for use on galvanized steel ground rod add suffix "TN" to the catalog number. Note: The ground rod hole diameter is larger for galvanized steel ground rod in the tin plated connector.
- ① Ground rod must be pre-crimped with die U2CABT (Index No. 348) when the PU998 dies are used in the Y750, Y35, Y39, Y45, or Y46 tools. Pre-crimping is not required when the P1011, S1011, S1012 or U1011 dies are used. UPRE-CRIMP dies may be used for additional mechanical resistance on ground rods.

- ② Where a PU998 die is recommended with the Y45 HYPRESS™, a PT6515 adapter must be used.
- ③ Where a PU998 die is recommended with the Y46 HYPRESS™, a PUADP-1 adapter must be used.
- ④ These die numbers do not appear on the connector.
* These connectors can only be installed using the Y750, Y45 or the Y46 HYPRESS™ with the recommended dies. These connectors CAN NOT be installed with the Y35 and Y39 HYPRESS™. When attaching connector to ground rod, ground rod must be embossed with appropriate PRE-CRIMP die. For connections that must meet IEEE 837 requirements UPRECRIMP - type PRE crimp dies must be used for maximum clamping retention.

Throughout the catalog you will notice blue highlighted items. These are the most frequently ordered BURNDY® Products.

Customer Service: US 1-800-346-4175

Canada: 1-800-361-6975 (Quebec)
www.burndy.com

1-800-387-6487 (all other provinces)

17

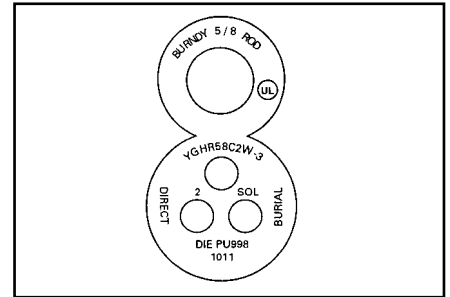
BURNDY® Grounding Products

TYPE YGHR-C

HYTAIL™

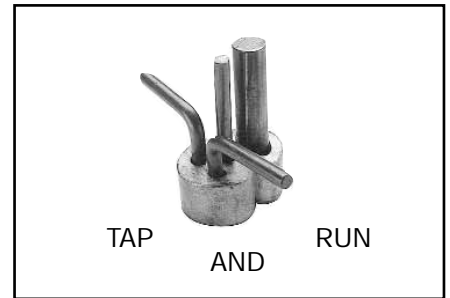
High Strength Irreversible Compression Ground Rod Tap Connectors

Type YGHR-C irreversible compression grounding connector is engineered specifically for the Telecommunications Industry for (1, 2 or 3) #2 solid, tinned or bare conductor taps. UL467 Listed. Acceptable for direct burial in earth or concrete. BURNDY® has designed this connector to meet the stringent requirements of OSHA, the National Electric Code (NEC), UL, and the Telecommunications Industry. Performance and long life are this connector's basic design guidelines.



Features and Benefits

- Tap side 1, 2 or 3 conductors.
 - ◊ One connector style can be used for many applications.
- Material is high conductivity wrought copper extrusion, identical material to the conductor.
 - ◊ High-conductivity copper minimizes resistance and voltage drop. Eliminates the possibility of corrosion due to dissimilar metals.
- System engineered tooling.
 - ◊ Each tooling recommendation has been designed to provide a reliable, dependable connection.
- The die index number is embossed on connector after completion of crimp.
 - ◊ Facilitates speedy inspection of installed connectors to ensure consistently reliable and dependable connections.
- Prefilled with PENETROX™ and individually sealed in clear polyethylene sheet.
 - ◊ Ensures the electrical integrity of the finished connection by inhibiting moisture and contaminants from entering the contact area. Maintains long-term high-conductivity.
- UL 467 Listed. Acceptable for direct burial.
 - ◊ May be used in direct burial or concrete embedded grounding applications. Provides quality assurance to recognized industry NEC standards from an independent party.



Catalog Number+	Ground Rod Diameter •	Tap Conductor ▲	Installation Tooling				Die Index		
			PAT750/Y35/Y750**		Y46*				
			Die No.	No. of Crimps	Die No.	No. of Crimps			
YGHR58C2W-3	5/8"	#2 Sol. Copper 1, 2, or 3 may be connected	PU998†	(1)	PU998†	(1)	998 or 1011		
					U1011	(2)		U1011	(2)
			U1011	(2)	P998	(1)		P1011	(2)
					P1011	(2)			

• Contact BURNDY® for other ground rod diameters.
 * PU998 and U1011 die sets require PUADP-1 adapter for use in the Y46 HYPRESS™.
 Tap positions may be left void when fewer than (3) conductors are used.
 + To order electro-tin plated connector for use on galvanized steel ground rod add suffix "-TN" to the catalog number.
NOTE: The ground rod hole diameter is larger for galvanized

steel ground rod in the tin plated connector.
 † Ground rod must be precrimped with die U2CABT (Index No. 348) when PU998 die set is used in the Y35, Y750 or Y46
 ▲ For even greater mechanical resistance use UPRECRIMP 58 dies.
 ** The Y750 utilizes PU dies and the U1011 die. The Y35 only uses PU998 die set.
NOTE: A 12" bend radius is recommended for the conductor.

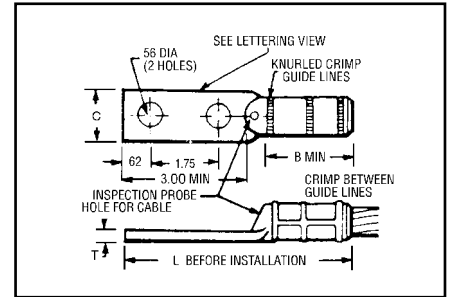
Throughout the catalog you will notice blue highlighted items. These are the most frequently ordered BURNDY® Products.

TYPE YGHA

HYLUG™

Heavy Duty Irreversible Compression Terminals

Heavy duty HYLUG™ irreversible compression terminals designed not only to carry short circuit load, but to also withstand high mechanical stress. Each conductor element has an inspection probe hole to insure proper cable insertion. UL467 Listed. Acceptable for direct burial in earth or concrete. UL486A Listed. Prefilled with PENETROX™ compound and strip sealed.



IEEE-837



Catalog Number	Copper Conductor Size	Installation Tools, Die Set Catalog Number, and (Number of Crimps)				B	C	L	T
		HYPRESS™ Y35/Y39/Y45 ① /Y46 ② /Y750 /PAT750							
YGHA2C-2N	2 str.	U1CRT (1)				.75	.97	4.21	.26
YGHA25-2N	1/0 str.	U27RT (1)				.83	.91	4.60	.19
YGHA26-2N	2/0 str.	U28RT (1)				.83	.97	4.38	.26
YGHA27-2N	3/0 str.	U29RT (1)				1.18	1.08	4.94	.29
YGHA28-2N	4/0 str.	U30RT (2)				1.18	1.22	4.94	.30
YGHA29-2N	250 kcmil	U31RT (2)				1.18	1.28	4.94	.34
YGHA31-2N	350 kcmil	U34RT (2)				1.18	1.62	5.00	.43
YGHA34-2N	500 kcmil	U36RT (3)				1.48	1.72	5.42	.40

① Where a "U" or "PU" die is recommended with the Y45 HYPRESS™, a PT6515 adapter must be used.

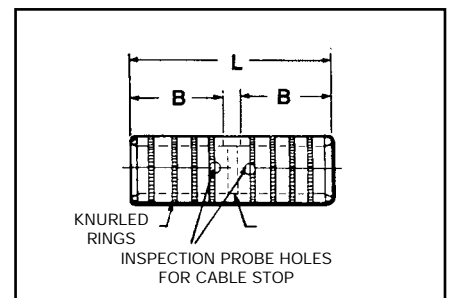
② Where a "U" or "PU" die is recommended with the Y46 HYPRESS™, a PUADP-1 adapter must be used.

TYPE YGHS

HYLINK™

Heavy Duty Irreversible Compression Terminals

Heavy duty HYLINK™ ground splice designed not only to carry short circuit load, but to also withstand high mechanical stress. Each conductor element has an inspection probe hole and a center stop to ensure proper cable insertion. UL467 Listed. Acceptable for direct burial in earth or concrete. UL486A Listed. Prefilled with PENETROX™ compound and strip sealed.



IEEE-837



Catalog Number	Copper Conductor Size	Installation Tools, Die Set Catalog Number, and (Number of Crimps)		B	L
		HYPRESS™ Y35/Y39/Y45 ① /Y46 ② /Y750 /PAT750			
YGHS2C	2 str.	U1CRT (1)		.75	1.73
YGHS25	1/0 str.	U27RT (1)		.83	1.89
YGHS26	2/0 str.	U28RT (1)		.83	1.89
YGHS27	3/0 str.	U29RT (1)		1.18	2.59
YGHS28	4/0 str.	U30RT (2)		1.18	2.59
YGHS29	250 kcmil	U31RT (2)		1.18	2.59
YGHS31	350 kcmil	U34RT (2)		1.18	2.59
YGHS34	500 kcmil	U36RT (3)		1.48	3.19

① Where a "U" or "PU" die is recommended with the Y45 HYPRESS™, a PT6515 adapter must be used.

② Where a "U" or "PU" die is recommended with the Y46 HYPRESS™, a PUADP-1 adapter must be used.

Throughout the catalog you will notice blue highlighted items. These are the most frequently ordered BURNDY® Products.