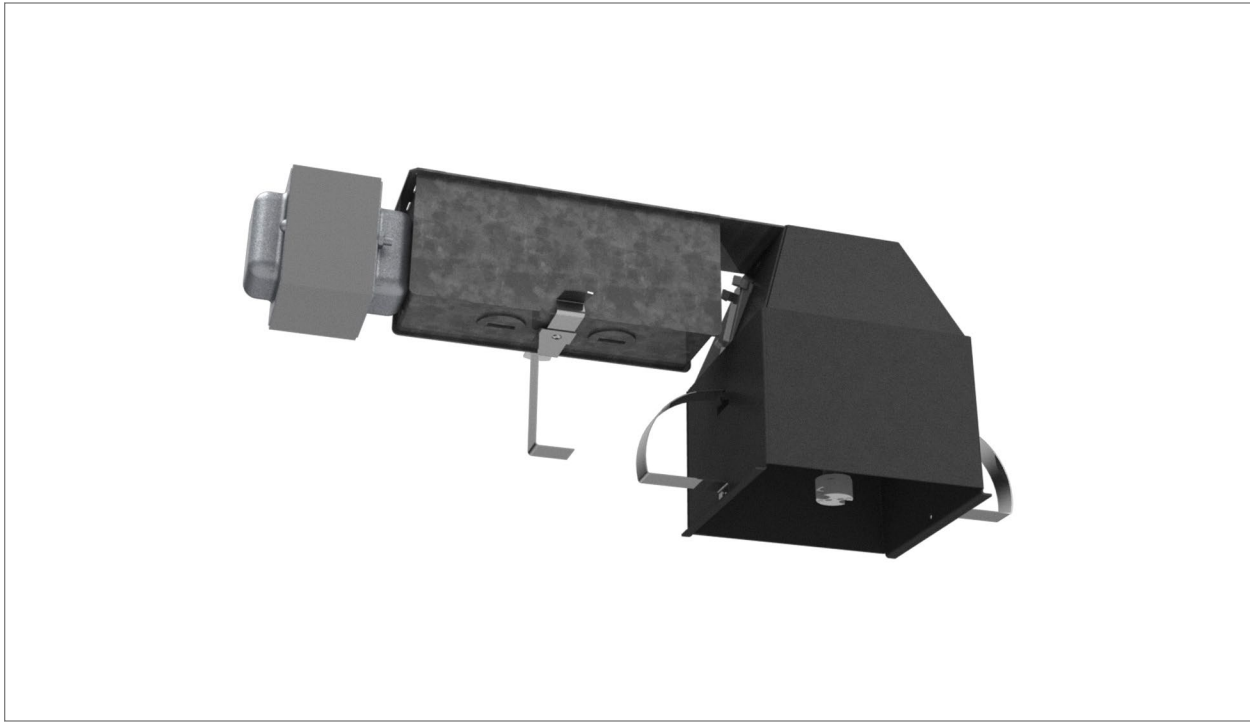


2-035 Square Remodel MR16



FEATURES

- Low voltage (12V) MR16 lamp (sold separately)
- Porcelain Bi Pin socket type GX5.3
- MR16 LED lamp is compatible with E15 electronic transformer option
- Designed for typical 5/8" drywall applications
- 18 Ga. galvanized steel junction box
- Over lamping protection
- Approved for branch circuit wiring
- Housing can is 18 GA. aluminum with a black powder coated paint finish

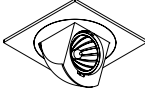

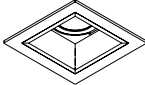
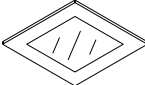
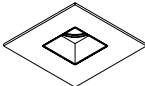
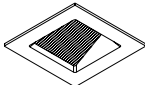
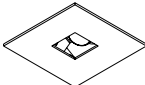


DETAILS

Aperture: 4"
Shape: Square
Ceiling: Non-Insulated



2-035-MR16-Specs • Subject to change without notice • Rev 2016.12.14 • 1/4

Compatible Trims

Trim	Trim Type
	Trimmed
2-250 Quadra Split	
2-500 Quadra	
2-520 Miro	
2-550 Nemo	
2-580 Forte	
2-582 Quadra Wall Wash	
2-585 Quadra Pinhole	
2-587 Forte Wall Wash	
2-597 Quadra Linover	

2-035

Square Remodel MR16

Project

Type

Notes

Product Code

1 2 3 4 5

1. Housing

2-035 Square

2. Housing Type

R-Q Remodel

3. Transformer

E Electronic

E15 15W Electronic ¹

M Magnetic

MPT Magnetic Potted ³

TOR Q-Tran Toroidal Magnetic ²

4. Voltage

120

277

347 ⁴

5. Options

WPHI White Painted Housing Interior

Notes

¹ **E15** transformer option is only compatible with Soraa MR16 LED lamp.

² **TOR** transformer length is 14" (356mm) standard.

³ **MPT** transformer option is available in 120V. Consult factory for additional voltages.

⁴ **347** voltage is only available with **M** magnetic transformer.

2-035-MR16-Specs • Subject to change without notice • Rev 2016.12.14 • 4/4
