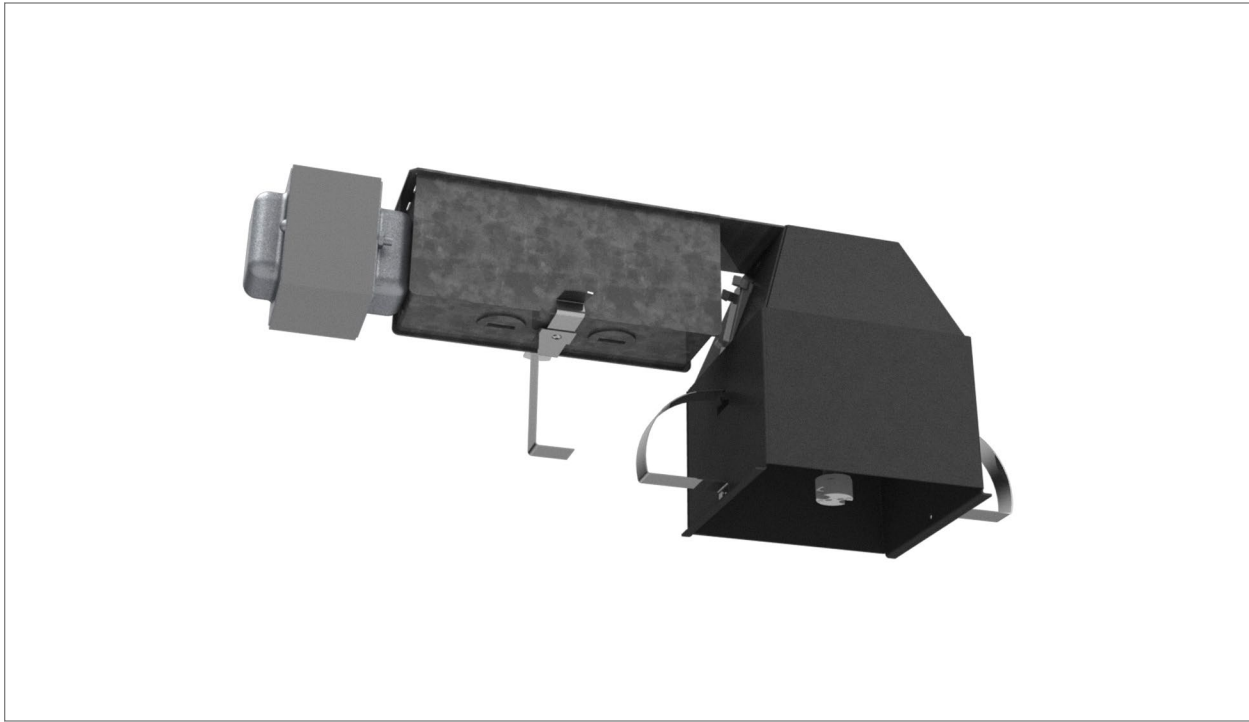


## 2-035 Square Remodel MR16



### FEATURES

- Low voltage (12V) MR16 lamp (sold separately)
- Porcelain Bi Pin socket type GX5.3
- MR16 LED lamp is compatible with E15 electronic transformer option
- Designed for typical 5/8" drywall applications
- 18 Ga. galvanized steel junction box
- Over lamping protection
- Approved for branch circuit wiring
- Housing can is 18 GA. aluminum with a black powder coated paint finish

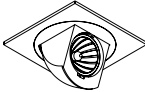

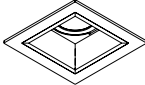
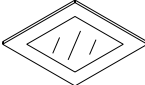
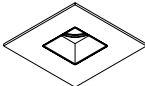
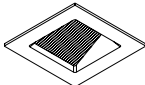
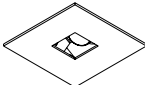


### DETAILS

Aperture: 4"  
Shape: Square  
Ceiling: Non-Insulated



2-035-MR16-Specs • Subject to change without notice • Rev 2016.12.14 • 1/4

# Compatible Trims

Trim	Trim Type
	Trimmed
2-250 Quadra Split	
2-500 Quadra	
2-520 Miro	
2-550 Nemo	
2-580 Forte	
2-582 Quadra Wall Wash	
2-585 Quadra Pinhole	
2-587 Forte Wall Wash	
2-597 Quadra Linover	

# 2-035

## Square Remodel MR16

---

Project

Type

Notes

Product Code

\_\_\_\_\_

1            2            3            4            5

1. Housing

**2-035** Square

2. Housing Type

**R-Q** Remodel

3. Transformer

**E** Electronic

**E15** 15W Electronic <sup>1</sup>

**M** Magnetic

**MPT** Magnetic Potted <sup>3</sup>

**TOR** Q-Tran Toroidal Magnetic <sup>2</sup>

4. Voltage

**120**

**277**

**347** <sup>4</sup>

5. Options

**WPHI** White Painted Housing Interior

Notes

<sup>1</sup> **E15** transformer option is only compatible with Soraa MR16 LED lamp.

<sup>2</sup> **TOR** transformer length is 14" (356mm) standard.

<sup>3</sup> **MPT** transformer option is available in 120V. Consult factory for additional voltages.

<sup>4</sup> **347** voltage is only available with **M** magnetic transformer.

---

2-035-MR16-Specs • Subject to change without notice • Rev 2016.12.14 • 4/4

---