

# 4-IN-1 ELECTRONICS SCREWDRIVERS



## Four different bits in one tool

- Rotating cap for optimum and precise control
- Heat-treated precision machined tip for greater strength

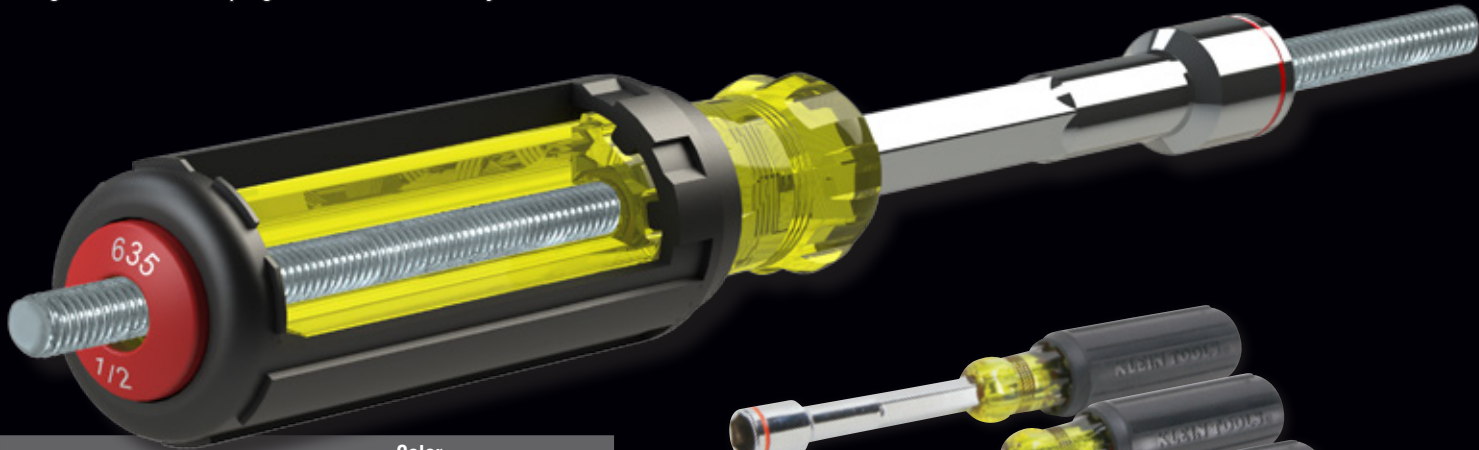
Cat. No.	Tips	Overall Length
32581	#0 & #00 <b>Phillips</b> and 1/8" & 3/32" <b>Slotted</b>	6.5" (165 mm)
32585	T7, T8, T10 and T15 tamper-proof <b>TORX®</b>	6.5" (165 mm)



**Completely hollow handle for unlimited threaded rod lengths**

- Wrench assist for additional torque
- Magnetic feature helps grab hex nuts securely

**HEAVY-DUTY  
NUT DRIVERS**



Cat. No.	Hex Sizes	Color Code	Overall Length
635-1/4	1/4"	Red	9" (229 mm)
635-5/16	5/16"	Yellow	
635-3/8	3/8"	Blue	
635-7/16	7/16"	Brown	
635-1/2	1/2"	Red	9.4" (239 mm)
635-9/16	9/16"	Orange	
Sets			
635-4	4-Piece set includes 1/4", 5/16", 3/8" & 7/16" hex		
635-6	6-Piece set includes 1/4", 5/16", 3/8", 7/16", 1/2" & 9/16" hex		



**Multiple sizes in one convenient tool**

- Interchangeable hex sizes are available in two models
- Heavy duty handles and shafts exceed the torque performance of regular nut drivers
- Wrench assist feature for additional torque

**MULTI-NUT  
DRIVERS**

Cat. No.	Hex Sizes	Overall Length
32800	3/16", 1/4", 5/16", 3/8", 7/16" & 9/16"	9.5" (241 mm)
32801	3/16", 1/4", 5/16", 3/8" & 9/16"	9.1" (231 mm)

