

Diva Reverse-Phase (Electronic Low-Voltage) Dimmer

Dimmer for ELV, LED, CFL, Halogen, and Incandescent dimmable bulbs.

Features

- On/off paddle switch with a linear-slide dimmer for a standard designer wallplate opening.
- Built-in soft-glow locator light behind paddle switch.†
- UL® Listed to control:
 - Dimmable LED with integrated driver
 - Dimmable compact fluorescent (CFL) with integrated ballast
 - Incandescent/Halogen
 - Electronic Low-Voltage (ELV) transformers with halogen or LED (see Lutron App Note #559)
- Reverse-phase type control. Neutral wire connection is required in the wallbox.
- 100% factory tested.

Application Requirements

- **For the best performance, use a bulb that is on the Lutron LED Report Card Tool**
- When dimming LEDs or CFLs, only bulbs marked or rated as DIMMABLE WITH REVERSE-PHASE OR UNIVERSAL DIMMERS may be used.
- Not compatible with magnetic low-voltage (MLV) transformers or magnetic LED transformers/drivers
- Dimmer is not compatible with bulbs rated only for forward-phase type dimmers.

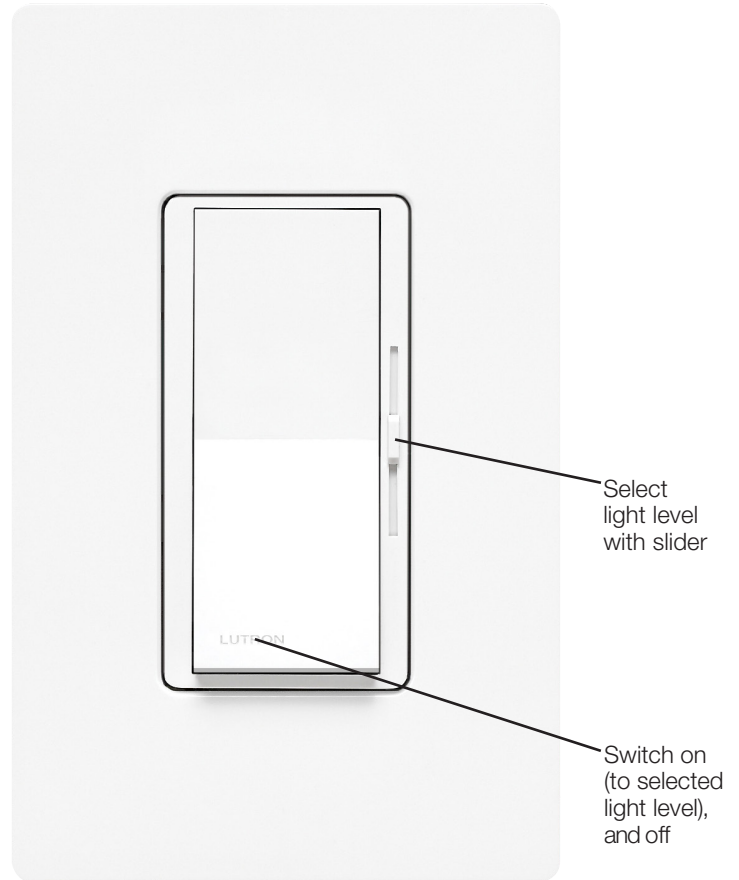
Model Number

DVRP-253P-XX¹ Single pole/3-way²
 DVSCR-253P-XX¹ Satin Colors Single pole / 3-way²

¹ "XX" in the model number represents color/finish code; see "Colors and Finishes" on next page.

² For 3-way and 4-way switching, use Claro switches or other mechanical switches.

† Locator light may not be noticeable in darker colors.



* Wallplate sold separately

Job Name:	Model Numbers:
Job Number:	

Specifications

Regulatory Approvals

- UL® Listed to US and Canadian safety requirements
UL1472 / CSA C22.2 184.1
- NOM

Power and Ratings

- 120 V~ 60 Hz
- 250 W dimmable LED/CFL
or
- 500 W Incandescent/Halogen
or
- 500 W ELV with Halogen
or
- Mixed bulb type per **Multigang and Mixed Bulb Type Ratings** table (see page 3)

Minimum Load

- 1 compatible LED/CFL bulb
or
- 5 W Incandescent/Halogen
or
- 1 ELV transformer (See note on page 3) **Environment**
- For indoor use only.
- Operating temperatures 32 °F to 104 °F (0 °C to 40 °C).

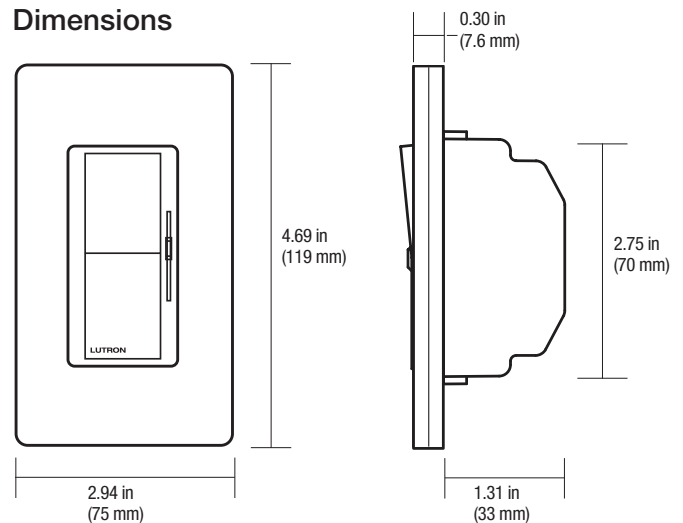
Performance

- Power-failure memory
- Captive linear slider
- Electrostatic discharge tested
- Precise color matching
- Mechanical air-gap switch to disconnect load power

Warranty

- 1 Year Limited Warranty
For additional Warranty information

Dimensions



Note: Requires a U.S. wallbox 2½ in (64 mm) deep minimum.

Colors and Finishes

Gloss Finishes

Add color/finish code to model #

Example: DVRP-253P-WH

WH	White
IV	Ivory
AL	Almond
LA	Light Almond
GR	Gray
BR	Brown
BL	Black

Satin Colors

Add color/finish #

Example: DVSCR P-253P-SW

HT	Hot
MR	Merlot
PL	Plum
TQ	Turquoise
TP	Taupe
ES	Eggshell
BI	Biscuit
SW	Snow
PD	Palladium
MN	Midnight
TC	Terracotta
SI	Sienna
GB	Green Briar
BG	Bluestone
MS	Mocha Stone
GS	Goldstone
DS	Desert Stone
ST	Stone
LS	Limestone

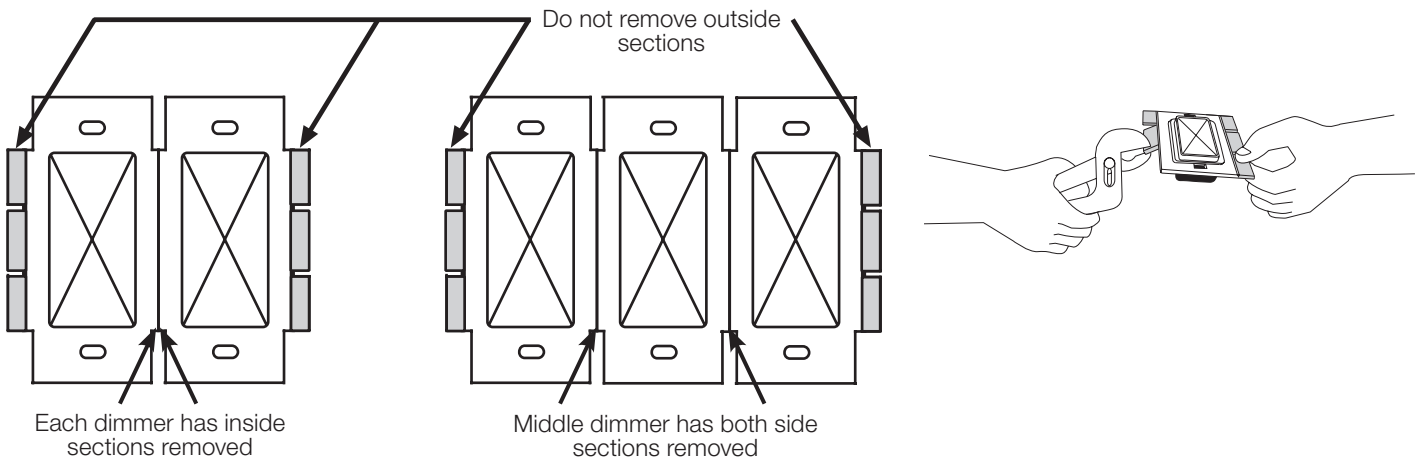
Job Name:	Model Numbers:
Job Number:	

Multigang and Mixed-Bulb-Type Ratings

When installing more than one dimmer in the same wallbox, it may be necessary to remove some side sections prior to wiring (**see diagram**). Removal of dimmer side sections may reduce maximum wattage, as shown in the chart below.

Mixing bulb types (**using a combination of LED/CFL and Incandescent/Halogen bulbs**) will also affect the maximum ratings, as shown in the chart below.

*EXAMPLE: If one set of side sections is removed and you have two 20 W LED bulbs installed (Total LED Wattage = 40 W), you may add up to 300 W of incandescent or halogen lighting.



Total LED/CFL Wattage Installed (Wattage per bulb x # of bulbs)	CFL LED	Maximum Allowable Incandescent/Halogen Wattage		
		No sides removed	1 side removed	2 sides removed
0 W	+	500	400	300
1 W - 40 W	+	400	300	200
41 W - 80 W	+	300	200	100
81 W - 120 W	+	200	100	50
121 W - 160 W	+	100	50	25
161 W - 200 W	+	50	0	0
201 W - 250 W	+	0	0	0

Note: For recommended ELV transformers and compatible MR16 LED bulbs, please see Lutron Application Note #559

Job Name:	Model Numbers:
Job Number:	