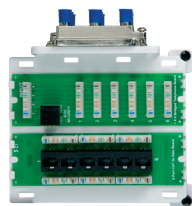


MDU Mounting Bracket & Combo Modules

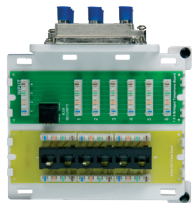


MAXIMUM DISTRIBUTION IN MINIMAL SPACE.

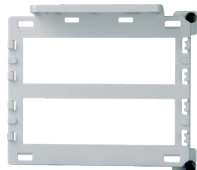
C01156
Cat 5e Combo



C01166
Cat 6 Combo



AC1042
Mounting Bracket



The Trio Combo Module with Data is designed to distribute video (Coax), voice (Telephone) and data (Ethernet) services from a single compact structured wiring module throughout the home.

The Trio Combo module includes:

C01156
MDU Mounting Bracket (AC1042)
8-way 2 GHz Video Splitter (VM0208)
6-way Phone Module (TM0106)
6-way Cat5e Data Board (AC0506).

C01166
MDU Mounting Bracket (AC1042)
8-way 2 GHz Video Splitter (VM0208)
6-way Phone Module (TM0106)
6-way Cat6 Data Board (AC0606).

This product will be sold as a single bracket (AC1042), and also in a packaged solution (C01156 and C01166) that includes telephone, data, and video splitter.

FEATURES & BENEFITS

- Compact design maximizes space and service distribution options within the enclosure
- Video Splitter is rated to 2 GHz and supports up to 8 locations
- Phone Module supports punchdown termination of up to 6 locations and includes RJ31x line seizure port
- Data Board supports punchdown termination of up to 6 Cat6 data lines (AC0606) or 6 Cat5e data lines (AC0506) for easy interface with the home network
- Strategically placed cable tie locations keeps wiring terminations tidy

