



LED InstantFit Lamps

14T5HE/46-850/IF21/G/DIM 10/1

Philips LED T5 InstantFit Lamps are an ideal energy saving choice for existing linear fluorescent fixtures.

Product data

| General Information | |
|---------------------------------------|---------------------|
| Cap-Base | G5 [G5] |
| Nominal Lifetime (Nom) | 50000 h |
| Switching Cycle | 50000X |
| B50L70 | 50000 h |
| Light Technical | |
| Color Code | 850 [CCT of 5000K] |
| Beam Angle (Nom) | 200 ° |
| Initial lumen (Nom) | 2100 lm |
| Luminous Flux (Rated) (Nom) | 2100 lm |
| Rated Beam Angle | 200 ° |
| Correlated Color Temperature (Nom) | 5000 K |
| Color Consistency | <5 |
| Color Rendering Index (Nom) | 82 |
| LLMF At End Of Nominal Lifetime (Nom) | 70 % |
| Operating and Electrical | |
| Input Frequency | 40000-110000 Hz |
| Power (Rated) (Nom) | 14 W |
| Lamp Current (Max) | 350 mA |
| Lamp Current (Min) | 150 mA |
| Starting Time (Nom) | 0.5 s |
| Warm Up Time to 60% Light (Nom) | 0.5 s |
| Power Factor (Nom) | 0.9 |

| Voltage (Nom) | 70-105 V |
|---------------------------------|---|
| Temperature | |
| T-Ambient (Max) | 45 °C |
| T-Ambient (Min) | -20 °C |
| T-Storage (Max) | 65 °C |
| T-Storage (Min) | -40 °C |
| T-Case Maximum (Nom) | 70 °C |
| Controls and Dimming | |
| Dimmable | Yes |
| Mechanical and Housing | |
| Product Length | 1200 mm |
| Approval and Application | |
| Energy Saving Product | Yes |
| Approbation Marks | UL certificate RoHS compliance DLC compliance |
| Product Data | |
| Order product name | 14T5HE/46-850/IF21/G/DIM 10/1 |
| EAN/UPC - Product | 046677476526 |
| Order code | 476523 |
| Numerator - Quantity Per Pack | 1 |
| Numerator - Packs per outer box | 10 |

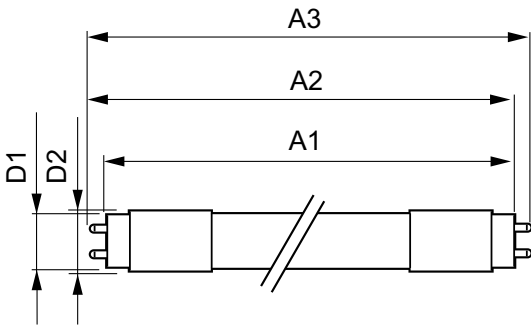
LED InstantFit Lamps

| | |
|---------------------|--------------|
| Material Nr. (12NC) | 929001824204 |
| Net Weight (Piece) | 0.146 kg |
| Model Number | 9290018242 |

Warnings and Safety

- Perform a visual inspection to ensure lamp holders (or sockets) are not damaged or loose. If the lamp holders (or sockets) are damaged, corroded, charred, blackened or loose, contact a qualified electrician for proper replacement.
- Please refer to the ballast compatibility guide located at www.philips.com/instantfit.

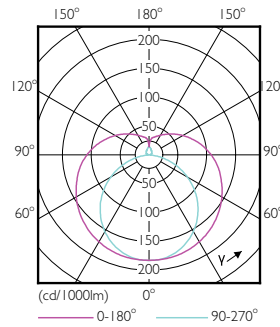
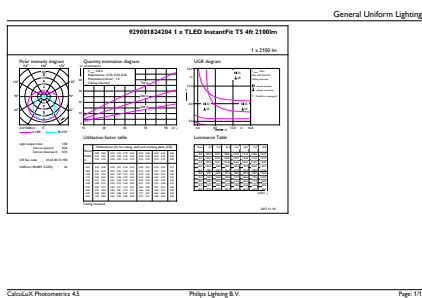
Dimensional drawing



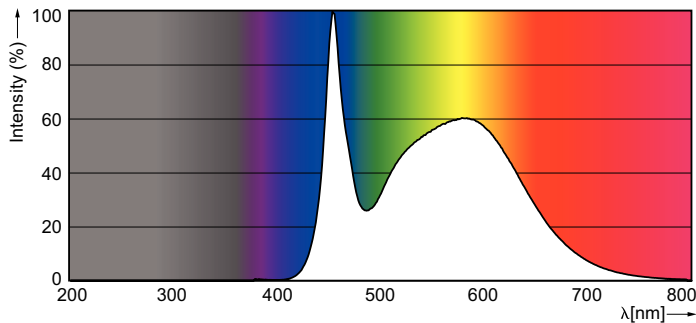
TLED 1200mm HFV16-28W 2100lm 5000K ND

| Product | D1 | D2 | A1 | A2 | A3 |
|--------------------------|---------|---------|-----------|-----------|---------|
| 14T5HE/46-850/IF21/G/DIM | 15.3 mm | 18.4 mm | 1147.8 mm | 1154.9 mm | 1162 mm |
| 10/1 | | | | | |

Photometric data



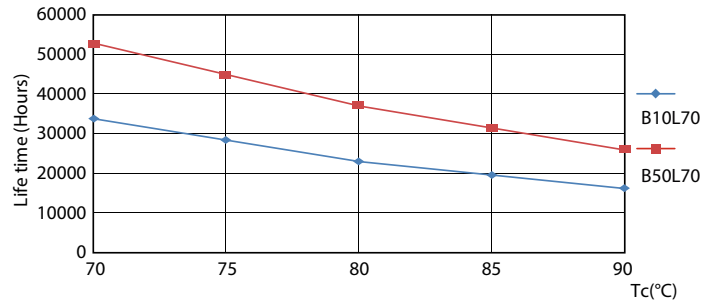
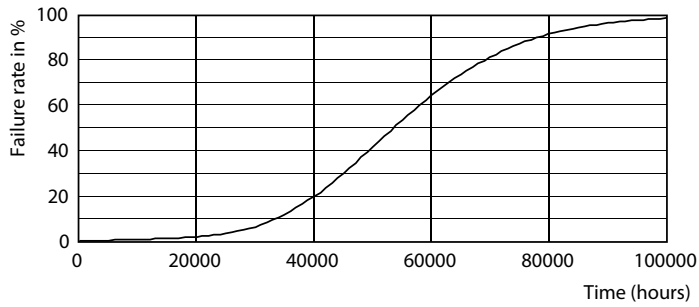
LEDtube 8W G5 830 200D DIM IF10



LEDtube 1200mm 17 W /850

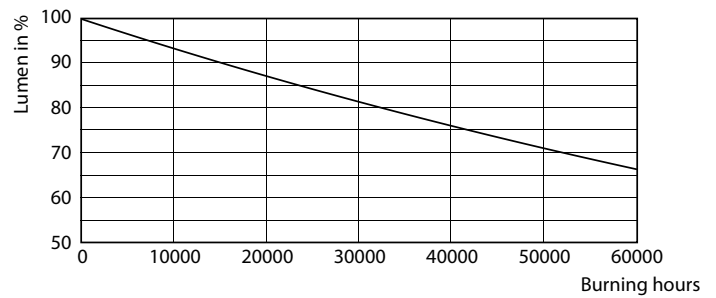
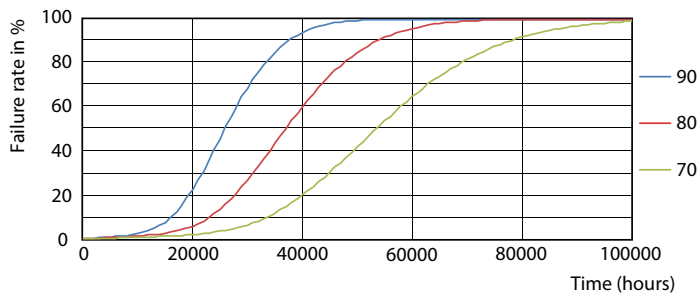
LED InstantFit Lamps

Lifetime



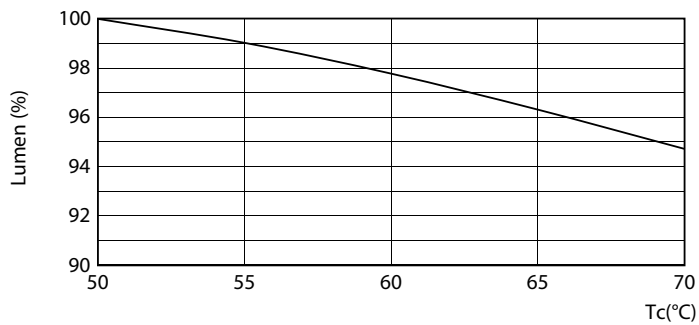
LEDtube 8-14W G5 830-850 200D DIM IF10-21

LEDtube 8-14W G5 830-850 200D DIM IF10-21



LEDtube 8-14W G5 830-850 200D DIM IF10-21

LEDtube 8-14W G5 830-850 200D DIM IF10-21



LEDtube 8-14W G5 830-850 200D DIM IF10-21