



# LED InstantFit Lamps

## 5PL-C/LED/13V/830/IF5/P/2P 20/1

Philips LED T8 InstantFit Lamps are an ideal energy saving choice for existing linear fluorescent fixtures.

### Product data

| General Information                   |                     |
|---------------------------------------|---------------------|
| Cap-Base                              | GX23-2 [ GX23-2]    |
| Nominal Lifetime (Nom)                | 50000 h             |
| Switching Cycle                       | 50000X              |
| B50L70                                | 50000 h             |
| Light Technical                       |                     |
| Color Code                            | 830 [ CCT of 3000K] |
| Beam Angle (Nom)                      | 150 °               |
| Luminous Flux (Nom)                   | 550 lm              |
| Luminous Flux (Rated) (Nom)           | 550 lm              |
| Rated Beam Angle                      | 150 °               |
| Correlated Color Temperature (Nom)    | 3000 K              |
| Color Consistency                     | <6                  |
| Color Rendering Index (Nom)           | 82                  |
| LLMF At End Of Nominal Lifetime (Nom) | 70 %                |
| Operating and Electrical              |                     |
| Input Frequency                       | 50 to 60 Hz         |
| Power (Rated) (Nom)                   | 5 W                 |
| Lamp Current (Max)                    | 50 mA               |
| Lamp Current (Min)                    | 15 mA               |
| Starting Time (Nom)                   | 0.5 s               |
| Warm Up Time to 60% Light (Nom)       | 0.5 s               |
| Power Factor (Nom)                    | 0.9                 |

| Voltage (Nom)                   | 120-277 V                       |
|---------------------------------|---------------------------------|
| Temperature                     |                                 |
| T-Ambient (Max)                 | 45 °C                           |
| T-Ambient (Min)                 | -20 °C                          |
| T-Storage (Max)                 | 65 °C                           |
| T-Storage (Min)                 | -40 °C                          |
| T-Case Maximum (Nom)            | 70 °C                           |
| Controls and Dimming            |                                 |
| Dimmable                        | No                              |
| Mechanical and Housing          |                                 |
| Product Length                  | 100 mm                          |
| Approval and Application        |                                 |
| Energy Saving Product           | Yes                             |
| Approval Marks                  | UL certificate RoHS compliance  |
| Product Data                    |                                 |
| Order product name              | 5PL-C/LED/13V/830/IF5/P/2P 20/1 |
| EAN/UPC - Product               | 046677532369                    |
| Order code                      | 929001885004                    |
| Numerator - Quantity Per Pack   | 1                               |
| Numerator - Packs per outer box | 20                              |

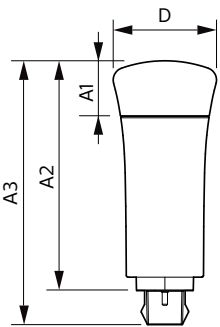
# LED InstantFit Lamps

|                     |              |
|---------------------|--------------|
| Material Nr. (12NC) | 929001885004 |
| Net Weight (Piece)  | 0.058 kg     |

## Warnings and Safety

- Philips LED T8 InstantFit lamps will only operate properly on compatible instant-start ballasts. Please refer to the Philips LED T8 InstantFit Installation Guide, which can be obtained through your local Philips Sales Representative, or visit [www.philips.com/tled](http://www.philips.com/tled)

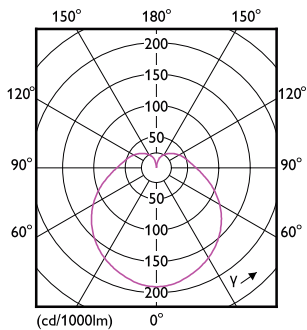
## Dimensional drawing



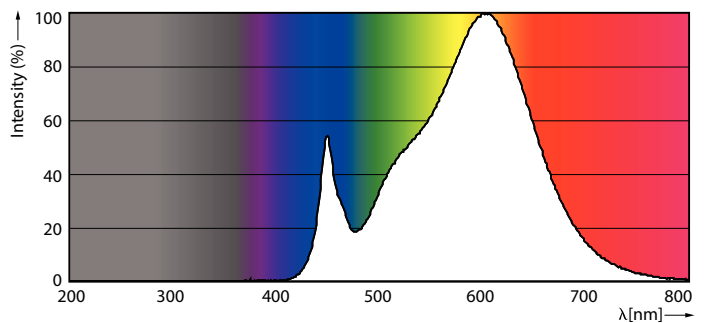
| Product                         | D       | A1      | A2       | A3       |
|---------------------------------|---------|---------|----------|----------|
| 5PL-C/LED/13V/830/IF5/P/2P 20/1 | 45.7 mm | 24.6 mm | 101.6 mm | 117.6 mm |

PLED PLC-V 5-13W 550lm 3000K G24d

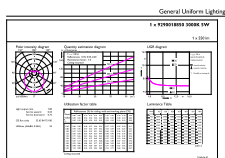
## Photometric data



LEDtube PLC 13V 5W GX23-2 827 15D ND

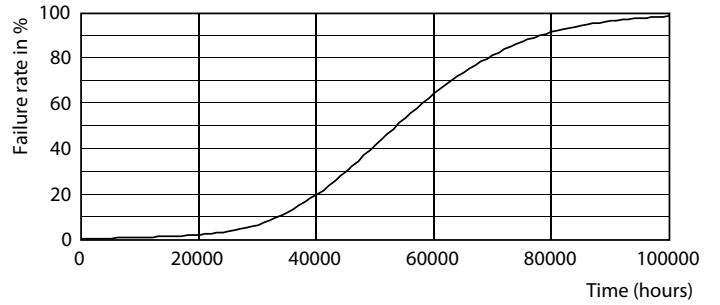
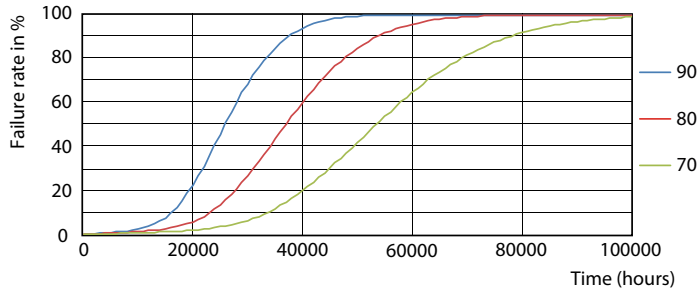


LEDtube PLC 13V 5W GX23-2 830 15D ND



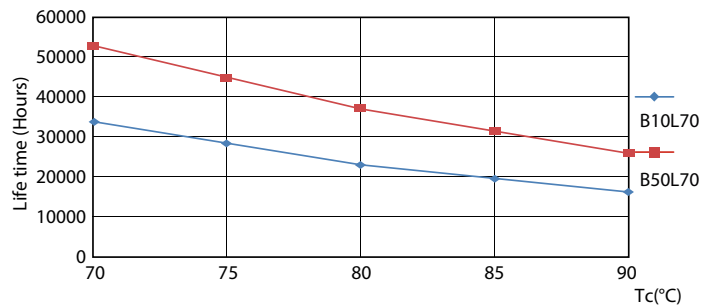
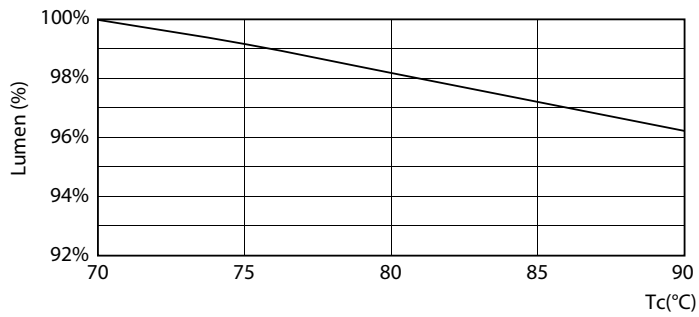
# LED InstantFit Lamps

## Lifetime



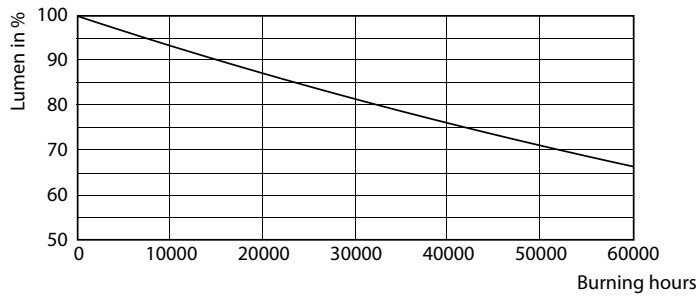
LEDtube PLC 13H 5W GX23-2 827 15D ND

LEDtube PLC 13H 5W GX23-2 827 15D ND



LEDtube PLC 13V 5W GX23-2 827 15D ND

LEDtube PLC 13H 5W GX23-2 827 15D ND



LEDtube PLC 13H 5W GX23-2 827 15D ND

## LED InstantFit Lamps

