



# LED InstantFit Lamps

## 5PL-C/LED/13H/827/IF5/P/2P 20/1

Philips LED T8 InstantFit Lamps are an ideal energy saving choice for existing linear fluorescent fixtures.

### Product data

General Information	
Cap-Base	GX23-2 [ GX23-2]
Nominal Lifetime (Nom)	50000 h
Switching Cycle	50000X
B50L70	50000 h
Light Technical	
Color Code	827 [ CCT of 2700K]
Beam Angle (Nom)	150 °
Luminous Flux (Nom)	520 lm
Luminous Flux (Rated) (Nom)	520 lm
Rated Beam Angle	150 °
Correlated Color Temperature (Nom)	2700 K
Color Consistency	<6
Color Rendering Index (Nom)	82
LLMF At End Of Nominal Lifetime (Nom)	70 %
Operating and Electrical	
Input Frequency	50 to 60 Hz
Power (Rated) (Nom)	5 W
Lamp Current (Max)	50 mA
Lamp Current (Min)	15 mA
Starting Time (Nom)	0.5 s
Warm Up Time to 60% Light (Nom)	0.5 s
Power Factor (Nom)	0.9

Voltage (Nom)	120-277 V
Temperature	
T-Ambient (Max)	45 °C
T-Ambient (Min)	-20 °C
T-Storage (Max)	65 °C
T-Storage (Min)	-40 °C
T-Case Maximum (Nom)	70 °C
Controls and Dimming	
Dimmable	No
Mechanical and Housing	
Height	27 mm
Approval and Application	
Energy Saving Product	Yes
Approval Marks	UL certificate RoHS compliance
Product Data	
Order product name	5PL-C/LED/13H/827/IF5/P/2P 20/1
EAN/UPC - Product	046677532307
Order code	929001884504
Numerator - Quantity Per Pack	1
Numerator - Packs per outer box	20

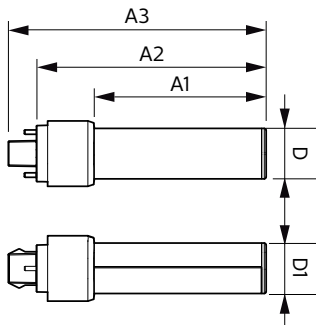
# LED InstantFit Lamps

Material Nr. (12NC)	929001884504
Net Weight (Piece)	0.001 kg

## Warnings and Safety

- Philips LED T8 InstantFit lamps will only operate properly on compatible instant-start ballasts. Please refer to the Philips LED T8 InstantFit Installation Guide, which can be obtained through your local Philips Sales Representative, or visit [www.philips.com/tled](http://www.philips.com/tled)

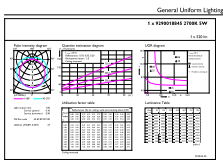
## Dimensional drawing



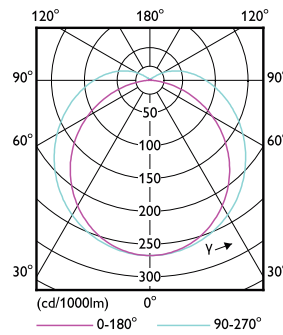
**PLED PLC-H 5-13W 550lm 2700K G24d**

Product	D	D1	A1	A2	A3
5PL-C/LED/13H/827/IF5/P/2P 20/1	27 mm	27 mm	91.5 mm	122.4 mm	137.4 mm

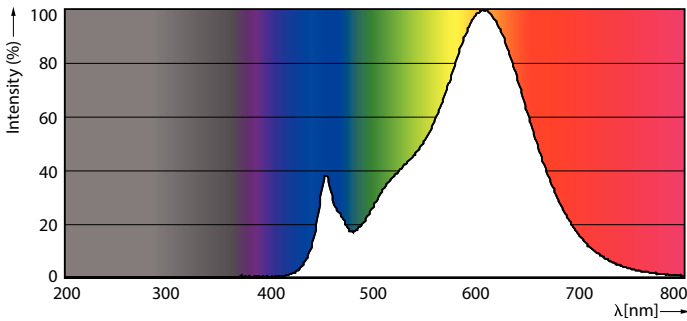
## Photometric data



Small text caption for the photometric data figure.



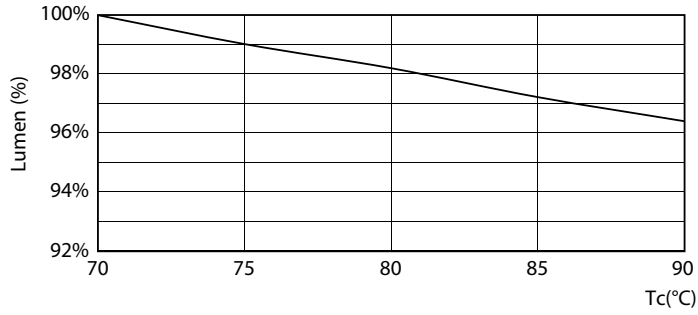
**LEDtube PLC 13H 5W GX23-2 827 15D ND**



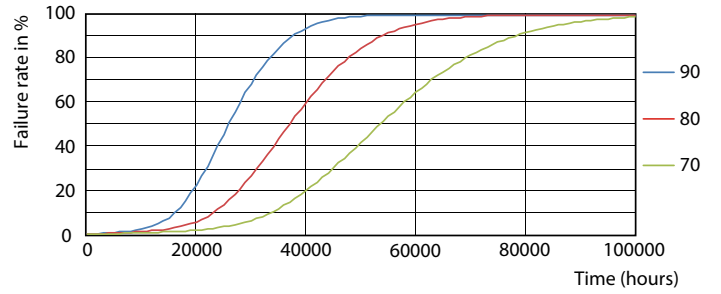
**LEDtube PLC 13H 5W GX23-2 827 15D ND**

# LED InstantFit Lamps

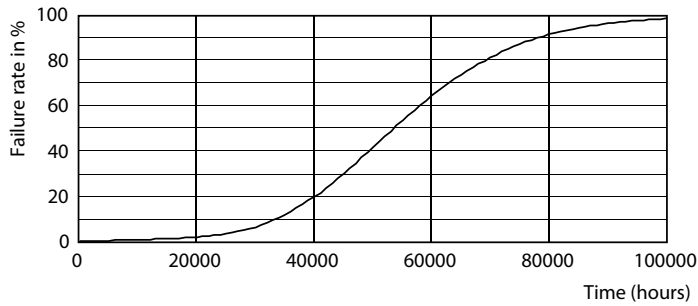
## Lifetime



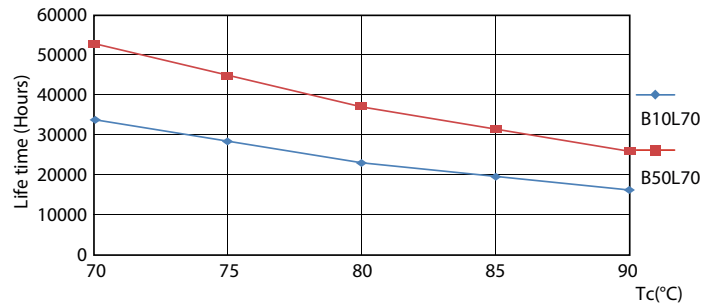
LEDtube PLC 13H 5W GX23-2 827 15D ND



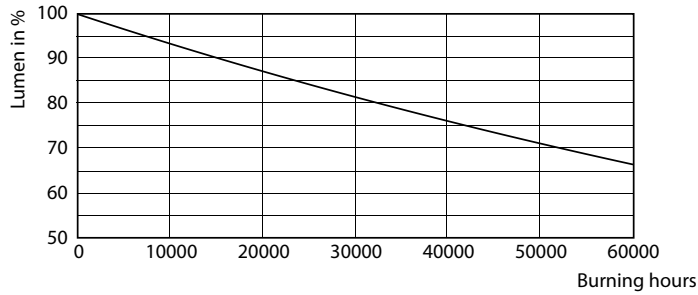
LEDtube PLC 13H 5W GX23-2 827 15D ND



LEDtube PLC 13H 5W GX23-2 827 15D ND



LEDtube PLC 13H 5W GX23-2 827 15D ND



LEDtube PLC 13H 5W GX23-2 827 15D ND

## LED InstantFit Lamps

