



LED InstantFit Lamps

5.5PL-C/LED/13V/840/IF5/P/4P 20/1

Philips LED T8 InstantFit Lamps are an ideal energy saving choice for existing linear fluorescent fixtures.

Product data

General Information	
Cap-Base	G24Q [G24q]
Nominal Lifetime (Nom)	50000 h
Switching Cycle	50000X
B50L70	50000 h
Light Technical	
Color Code	840 [CCT of 4000K]
Beam Angle (Nom)	150 °
Luminous Flux (Nom)	580 lm
Luminous Flux (Rated) (Nom)	580 lm
Rated Beam Angle	150 °
Correlated Color Temperature (Nom)	4000 K
Color Consistency	<6
Color Rendering Index (Nom)	82
LLMF At End Of Nominal Lifetime (Nom)	70 %
Operating and Electrical	
Input Frequency	25000-100000 Hz
Power (Rated) (Nom)	5.5 W
Lamp Current (Max)	280 mA
Lamp Current (Min)	130 mA
Starting Time (Nom)	0.5 s
Warm Up Time to 60% Light (Nom)	0.5 s
Power Factor (Nom)	0.9

Voltage (Nom)	14-60 V
Temperature	
T-Ambient (Max)	45 °C
T-Ambient (Min)	-20 °C
T-Storage (Max)	65 °C
T-Storage (Min)	-40 °C
T-Case Maximum (Nom)	70 °C
Controls and Dimming	
Dimmable	No
Mechanical and Housing	
Product Length	100 mm
Approval and Application	
Energy Saving Product	Yes
Approval Marks	UL certificate RoHS compliance
Product Data	
Order product name	5.5PL-C/LED/13V/840/IF5/P/4P 20/1
EAN/UPC - Product	046677532468
Order code	929001886004
Numerator - Quantity Per Pack	1
Numerator - Packs per outer box	20

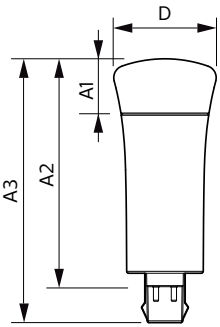
LED InstantFit Lamps

Material Nr. (12NC)	929001886004
Net Weight (Piece)	0.058 kg

Warnings and Safety

- Philips LED T8 InstantFit lamps will only operate properly on compatible instant-start ballasts. Please refer to the Philips LED T8 InstantFit Installation Guide, which can be obtained through your local Philips Sales Representative, or visit www.philips.com/tled

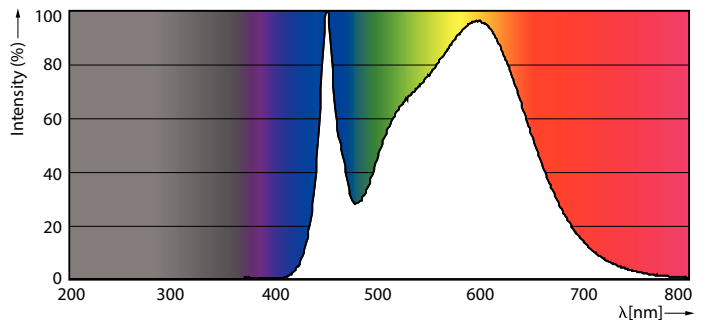
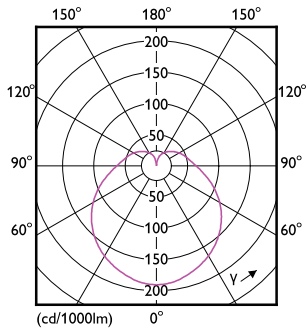
Dimensional drawing



Product	D	A1	A2	A3
5.5PL-C/LED/13V/840/IF5/P/4P 20/1	45.7 mm	24.6 mm	101.6 mm	117.6 mm

PLED PLC-V 5-13W 580lm 4000K G24q

Photometric data



LEDtube PLC 13V 5W GX23-2 827 15D ND

LEDtube PLC 13V 5.5W G24Q 840 15D ND

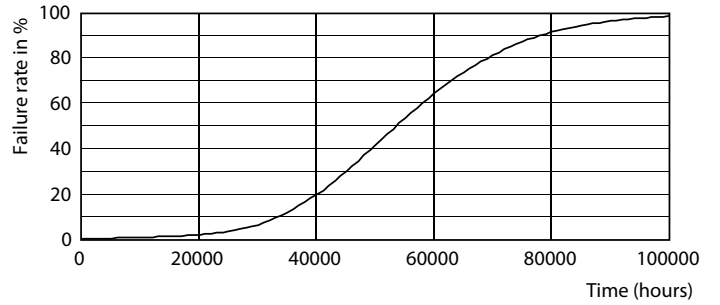
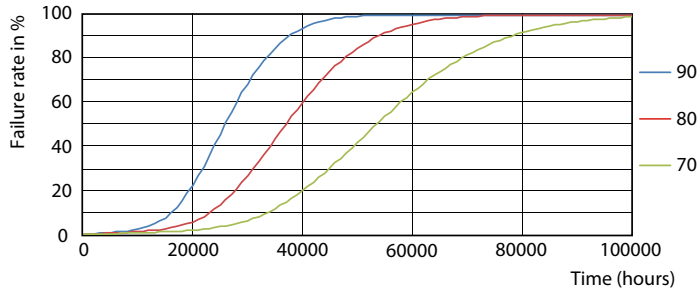
General Uniform Lighting

• FOTOMETRIE OVER LEVING

Product	Beam Spread	Beam Angle	Beam Diameter	Beam Length	Beam Area	Beam Volume
LEDtube PLC 13V 5W GX23-2 827 15D ND	15°	15°	150 mm	150 mm	150 mm	150 mm

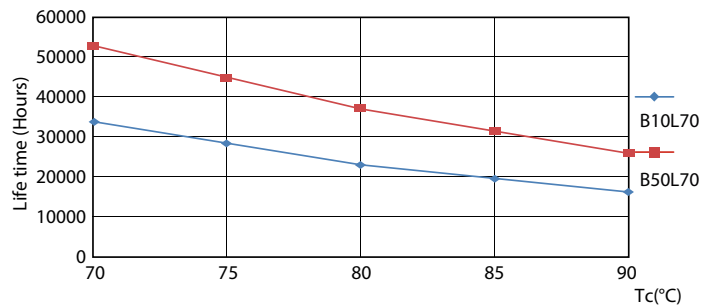
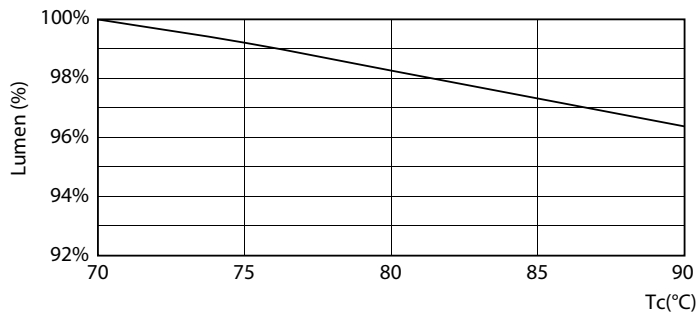
LED InstantFit Lamps

Lifetime



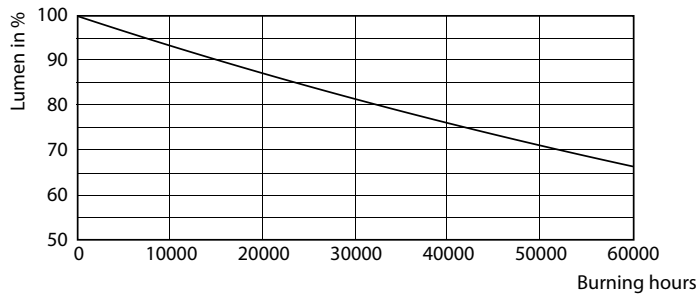
LEDtube PLC 13H 5W GX23-2 827 15D ND

LEDtube PLC 13H 5W GX23-2 827 15D ND



LEDtube PLC 13V 5.5W G24Q 827 15D ND

LEDtube PLC 13H 5W GX23-2 827 15D ND



LEDtube PLC 13H 5W GX23-2 827 15D ND

LED InstantFit Lamps

