

Project: _____

Type: _____

Drawn by: _____ Catalogue #: _____

Date: _____



Series Spec Sheet

VELOCE

4", 6" & 8" ARCHITECTURAL LED DOWNLIGHT

The Veloce series of LED downlights is an ideal solution for fixture replacement in existing installations as well as in new constructions. They operate on a 1 to 10 V dimming system, which makes them best suited for commercial applications.

FEATURES AND SPECIFICATIONS

• Construction

- Finish
 - Trim finish powder coated white aluminum
 - Baffle finish White, Silver or Black
 - Clear lens (45° beam) or Frosted lens (70° beam)
 - Shape Round; 4", 6" and 8"

Mounting

- LED module with LED driver easily installed with quick connect wire
- Torsion spring mounting clips

• Technical specifications

- 1-10 V dimming
- Color temperature: 3 000, 3 500 and 4 000 K
- Ambient temperature: -20°C to 40°C
- LED chip binning 2-3 step MacAdam Ellipse to ensure color consistency

• Compliances

- cETLus conforms to UL STD 1598 and certified to CSA STD C22.2 No 250

5
yrs
warranty



dimmable
fixture



dry
location



OVERVIEW

Light source	LED
Watts (W)	13, 18, 26, 38
Lumen output (lm)	960 - 3 950
Efficiency (lm/W)	74 - 108
Color temperature (K)	3 000, 3 500, 4 000
CRI	90+
Weight (lbs/ft)	4", 6", 8"

QUICK SHIP TECHNICAL SPECIFICATION TABLE

LED VELOCE™ 4

Order code	Part number	Watts	Volts	Color temp.	Lumen	Efficiency	CRI	Life L70	Tested hours	Beam	CBCP	Finish	Power factor	THD (%)	Traditional equivalent (W)		Case qty (ext.)
		(W)	(VCA)	(K) ²	(lm) ³	(lm/W)	(hrs) ⁴	(hrs) ⁴	(°)	(cd)	LFC				DHI		
4" Clear Lens																	
64744	VELOCE4/MOD/13W/30K/45/SLV/STD	13	120-277	3 000	1160	89	90	50 000	8 000	45	1 648	Silver	>0.9	<20	26	20	4
64750	VELOCE4/MOD/13W/30K/45/BLK/STD	13	120-277	3 000	1160	89	90	50 000	8 000	45	1 648	Black	>0.9	<20	26	20	4
64756	VELOCE4/MOD/13W/30K/45/WH/STD	13	120-277	3 000	1160	89	90	50 000	8 000	45	1 648	White	>0.9	<20	26	20	4
64745	VELOCE4/MOD/13W/35K/45/SLV/STD	13	120-277	3 500	1160	89	90	50 000	8 000	45	1 781	Silver	>0.9	<20	26	20	4
64751	VELOCE4/MOD/13W/35K/45/BLK/STD	13	120-277	3 500	1160	89	90	50 000	8 000	45	1 781	Black	>0.9	<20	26	20	4
64757	VELOCE4/MOD/13W/35K/45/WH/STD	13	120-277	3 500	1160	89	90	50 000	8 000	45	1 781	White	>0.9	<20	26	20	4
64746	VELOCE4/MOD/13W/40K/45/SLV/STD	13	120-277	4 000	1160	89	90	50 000	8 000	45	1 756	Silver	>0.9	<20	26	20	4
64752	VELOCE4/MOD/13W/40K/45/BLK/STD	13	120-277	4 000	1160	89	90	50 000	8 000	45	1 756	Black	>0.9	<20	26	20	4
64758	VELOCE4/MOD/13W/40K/45/WH/STD	13	120-277	4 000	1160	89	90	50 000	8 000	45	1 756	White	>0.9	<20	26	20	4
4" Frost Lens																	
64747	VELOCE4/MOD/F/13W/30K/70/SLV/STD	13	120-277	3 000	960	74	90	50 000	8 000	70	599	Silver	>0.9	<20	26	20	4
64753	VELOCE4/MOD/F/13W/30K/70/BLK/STD	13	120-277	3 000	960	74	90	50 000	8 000	70	599	Black	>0.9	<20	26	20	4
64759	VELOCE4/MOD/F/13W/30K/70/WH/STD	13	120-277	3 000	960	74	90	50 000	8 000	70	599	White	>0.9	<20	26	20	4
64748	VELOCE4/MOD/F/13W/35K/70/SLV/STD	13	120-277	3 500	960	74	90	50 000	8 000	70	624	Silver	>0.9	<20	26	20	4
64754	VELOCE4/MOD/F/13W/35K/70/BLK/STD	13	120-277	3 500	960	74	90	50 000	8 000	70	624	Black	>0.9	<20	26	20	4
64760	VELOCE4/MOD/F/13W/35K/70/WH/STD	13	120-277	3 500	960	74	90	50 000	8 000	70	624	White	>0.9	<20	26	20	4
64749	VELOCE4/MOD/F/13W/40K/70/SLV/STD	13	120-277	4 000	960	74	90	50 000	8 000	70	643	Silver	>0.9	<20	26	20	4
64755	VELOCE4/MOD/F/13W/40K/70/BLK/STD	13	120-277	4 000	960	74	90	50 000	8 000	70	643	Black	>0.9	<20	26	20	4
64761	VELOCE4/MOD/F/13W/40K/70/WH/STD	13	120-277	4 000	960	74	90	50 000	8 000	70	643	White	>0.9	<20	26	20	4

LED VELOCE™ 6

Order code	Part number	Watts	Volts	Color temp.	Lumen	Efficiency	CRI	Life L70	Tested hours	Beam	CBCP	Finish	Power factor	THD (%)	Traditional equivalent (W)		Case qty (ext.)
		(W)	(VCA)	(K) ²	(lm) ³	(lm/W)	(hrs) ⁴	(hrs) ⁴	(°)	(cd)	LFC				DHI		
6" Clear Lens																	
64762	VELOCE6/MOD/18W/35K/45/SLV/STD	18	120-277	3 500	2 030	113	90	50 000	8 000	45	2 328	Silver	>0.9	<20	2 x 26	30	4
64766	VELOCE6/MOD/18W/35K/45/BLK/STD	18	120-277	3 500	2 030	113	90	50 000	8 000	45	2 328	Black	>0.9	<20	2 x 26	30	4
64770	VELOCE6/MOD/18W/35K/45/WH/STD	18	120-277	3 500	2 030	113	90	50 000	8 000	45	2 328	White	>0.9	<20	2 x 26	30	4
64763	VELOCE6/MOD/18W/40K/45/SLV/STD	18	120-277	4 000	2 030	113	90	50 000	8 000	45	2 364	Silver	>0.9	<20	2 x 26	30	4
64767	VELOCE6/MOD/18W/40K/45/BLK/STD	18	120-277	4 000	2 030	113	90	50 000	8 000	45	2 364	Black	>0.9	<20	2 x 26	30	4
64771	VELOCE6/MOD/18W/40K/45/WH/STD	18	120-277	4 000	2 030	113	90	50 000	8 000	45	2 364	White	>0.9	<20	2 x 26	30	4
64774	VELOCE6/MOD/26W/35K/45/SLV/STD	26	120-277	3 500	2 750	106	90	50 000	8 000	45	3 121	Silver	>0.9	<20	2 x 32	50	4
64778	VELOCE6/MOD/26W/35K/45/BLK/STD	26	120-277	3 500	2 750	106	90	50 000	8 000	45	3 121	Black	>0.9	<20	2 x 32	50	4
64782	VELOCE6/MOD/26W/35K/45/WH/STD	26	120-277	3 500	2 750	106	90	50 000	8 000	45	3 121	White	>0.9	<20	2 x 32	50	4
64775	VELOCE6/MOD/26W/40K/45/SLV/STD	26	120-277	4 000	2 750	106	90	50 000	8 000	45	3 237	Silver	>0.9	<20	2 x 32	50	4
64779	VELOCE6/MOD/26W/40K/45/BLK/STD	26	120-277	4 000	2 750	106	90	50 000	8 000	45	3 237	Black	>0.9	<20	2 x 32	50	4
64783	VELOCE6/MOD/26W/40K/45/WH/STD	26	120-277	4 000	2 750	106	90	50 000	8 000	45	3 237	White	>0.9	<20	2 x 32	50	4
6" Frost Lens																	
64776	VELOCE6/MOD/F/26W/35K/70/SLV/STD	26	120-277	3 500	2 500	96	90	50 000	8 000	70	1 331	Silver	>0.9	<20	2 x 32	50	4
64780	VELOCE6/MOD/F/26W/35K/70/BLK/STD	26	120-277	3 500	2 500	96	90	50 000	8 000	70	1 331	Black	>0.9	<20	2 x 32	50	4
64784	VELOCE6/MOD/F/26W/35K/70/WH/STD	26	120-277	3 500	2 500	96	90	50 000	8 000	70	1 331	White	>0.9	<20	2 x 32	50	4
64764	VELOCE6/MOD/F/18W/35K/70/SLV/STD	18	120-277	3 500	1 860	103	90	50 000	8 000	70	980	Silver	>0.9	<20	2 x 26	30	4
64768	VELOCE6/MOD/F/18W/35K/70/BLK/STD	18	120-277	3 500	1 860	103	90	50 000	8 000	70	980	Black	>0.9	<20	2 x 26	30	4
64772	VELOCE6/MOD/F/18W/35K/70/WH/STD	18	120-277	3 500	1 860	103	90	50 000	8 000	70	980	White	>0.9	<20	2 x 26	30	4
64765	VELOCE6/MOD/F/18W/40K/70/SLV/STD	18	120-277	4 000	1 860	103	90	50 000	8 000	70	959	Silver	>0.9	<20	2 x 26	30	4
64769	VELOCE6/MOD/F/18W/40K/70/BLK/STD	18	120-277	4 000	1 860	103	90	50 000	8 000	70	959	Black	>0.9	<20	2 x 26	30	4
64773	VELOCE6/MOD/F/18W/40K/70/WH/STD	18	120-277	4 000	1 860	103	90	50 000	8 000	70	959	White	>0.9	<20	2 x 26	30	4
64777	VELOCE6/MOD/F/26W/40K/70/SLV/STD	26	120-277	4 000	2 500	96	90	50 000	8 000	70	1 407	Silver	>0.9	<20	2 x 32	50	4
64781	VELOCE6/MOD/F/26W/40K/70/BLK/STD	26	120-277	4 000	2 500	96	90	50 000	8 000	70	1 407	Black	>0.9	<20	2 x 32	50	4
64785	VELOCE6/MOD/F/26W/40K/70/WH/STD	26	120-277	4 000	2 500	96	90	50 000	8 000	70	1 407	White	>0.9	<20	2 x 32	50	4

Data is based upon tests performed in a controlled environment. Actual performance can vary depending on operating conditions. All products are subject to change or may be discontinued any time without notice.

QUICK SHIP TECHNICAL SPECIFICATION TABLE

LED VELOCE™ 8

Order code	Part number	Watts	Volts	Color temp.	Lumen	Efficiency	CRI	Life L70	Tested hours	Beam	CBCP	Finish	Power factor	THD	Traditional equivalent (W)		Case qty (ext.)
		(W)	(VCA)	(K) ²	(lm) ³	(lm/W)	(hrs) ⁴	(hrs) ⁴	(°)	(cd)	(%)	LFC	DHI				
8" Clear Lens																	
64786	VELOCE8/MOD/26W/35K/45/SLV/STD	26	120-277	3 500	2 800	108	90	50 000	8 000	45	2 517	Silver	>0.9	<20	2 x 32	50	4
64790	VELOCE8/MOD/26W/35K/45/BLK/STD	26	120-277	3 500	2 800	108	90	50 000	8 000	45	2 517	Black	>0.9	<20	2 x 32	50	4
64794	VELOCE8/MOD/26W/35K/45/WH/STD	26	120-277	3 500	2 800	108	90	50 000	8 000	45	2 517	White	>0.9	<20	2 x 32	50	4
64787	VELOCE8/MOD/26W/40K/45/SLV/STD	26	120-277	4 000	2 800	108	90	50 000	8 000	45	2 852	Silver	>0.9	<20	2 x 32	50	4
64791	VELOCE8/MOD/26W/40K/45/BLK/STD	26	120-277	4 000	2 800	108	90	50 000	8 000	45	2 852	Black	>0.9	<20	2 x 32	50	4
64795	VELOCE8/MOD/26W/40K/45/WH/STD	26	120-277	4 000	2 800	108	90	50 000	8 000	45	2 852	White	>0.9	<20	2 x 32	50	4
64798	VELOCE8/MOD/38W/40K/45/SLV/STD	38	120-277	4 000	3 950	104	90	50 000	8 000	45	4 092	Silver	>0.9	<20	2 x 42	70	4
64800	VELOCE8/MOD/38W/40K/45/BLK/STD	38	120-277	4 000	3 950	104	90	50 000	8 000	45	4 092	Black	>0.9	<20	2 x 42	70	4
64802	VELOCE8/MOD/38W/40K/45/WH/STD	38	120-277	4 000	3 950	104	90	50 000	8 000	45	4 092	White	>0.9	<20	2 x 42	70	4
8" Frost Lens																	
64788	VELOCE8/MOD/F/26W/35K/70/SLV/STD	26	120-277	3 500	2 490	96	90	50 000	8 000	70	1 468	Silver	>0.9	<20	2 x 32	50	4
64792	VELOCE8/MOD/F/26W/35K/70/BLK/STD	26	120-277	3 500	2 490	96	90	50 000	8 000	70	1 468	Black	>0.9	<20	2 x 32	50	4
64796	VELOCE8/MOD/F/26W/35K/70/WH/STD	26	120-277	3 500	2 490	96	90	50 000	8 000	70	1 468	White	>0.9	<20	2 x 32	50	4
64789	VELOCE8/MOD/F/26W/40K/70/SLV/STD	26	120-277	4 000	2 490	96	90	50 000	8 000	70	1 601	Silver	>0.9	<20	2 x 32	50	4
64793	VELOCE8/MOD/F/26W/40K/70/BLK/STD	26	120-277	4 000	2 490	96	90	50 000	8 000	70	1 601	Black	>0.9	<20	2 x 32	50	4
64797	VELOCE8/MOD/F/26W/40K/70/WH/STD	26	120-277	4 000	2 490	96	90	50 000	8 000	70	1 601	White	>0.9	<20	2 x 32	50	4
64799	VELOCE8/MOD/F/38W/40K/70/SLV/STD	38	120-277	4 000	3 500	92	90	50 000	8 000	70	2 282	Silver	>0.9	<20	2 x 42	70	4
64801	VELOCE8/MOD/F/38W/40K/70/BLK/STD	38	120-277	4 000	3 500	92	90	50 000	8 000	70	2 282	Black	>0.9	<20	2 x 42	70	4
64803	VELOCE8/MOD/F/38W/40K/70/WH/STD	38	120-277	4 000	3 500	92	90	50 000	8 000	70	2 282	White	>0.9	<20	2 x 42	70	4

¹ **QUICK SHIP:** Product availability is subject to change without notice. Please contact your Stanpro customer service representative to confirm inventory levels at time of order.

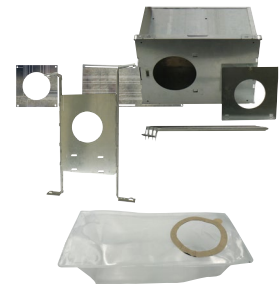
² Typical color temperature range: +/- 5 %.

³ Lumen values are derived from photometric testing. Initial lumens range: +/- 10 %.

⁴ Life hours are derived from IESNA LM-80-08 testing report and projected per IESNA TM-21-11 extrapolations.

ACCESSORIES (order separately)

Order code	Part number	Type	Opening diameter (in)	Case qty (master)
66051	ACC/MPLATE/4.25/SQR/STD	Mounting plate	4 1/4	100
66058	ACC/MPLATE/4.25/ADJ/STD	Ajustable mounting plate	4 1/4	50
66821	ACC/MPLATE/4.25IN/HANG.BARS/STD	Mounting plate with hanger bars	4 1/4	20
62672	ACC/INSULATED BOX/3.4.5/STD	Insulated box with hanger bars	3 to 4 1/2	40
66143	ACC/4/VAPOR BARRIER/STD	Vapor barrier extender	4 1/4	50
66817	ACC/MPLATE/VELOCE6/HANG.BARS/STD	Mounting plate with hanger bars	6	8
64263	ACC/MPLATE/6.25IN/SQR/STD	Mounting plate	6 1/4	96
64921	RF/ACC/6/MOUNT.PLATE/ADJ/STD	Ajustable mounting plate	6 1/4	24
66144	ACC/6/VAPOR BARRIER/STD	Vapor barrier extender	6 2/9	50
66818	ACC/MPLATE/VELOCE8/HANG.BARS/STD	Mounting plate with hanger bars	8	8



LED DRIVER (INCLUDED WITH LED MODULE)

LED Driver	System watts (W)	Max. load (W)	Input volts (VAC)	Output volts (VDC)	Input current (mA)	Cutting hole diameter (in)
Veloce 4	16	18	120-277	30-42	350	3 17/32 up to 4 1/4
Veloce 6 (18 W)	22	36	120-277	30-42	500	6 up to 6 5/8
Veloce 6 (26 W)	30	36	120-277	30-42	700	6 up to 6 5/8
Veloce 8 (26 W)	30	36	120-277	30-42	700	8 1/16 up to 8 11/16
Veloce 8 (36 W)	42	50	120-277	22-38	1 050	8 1/16 up to 8 11/16

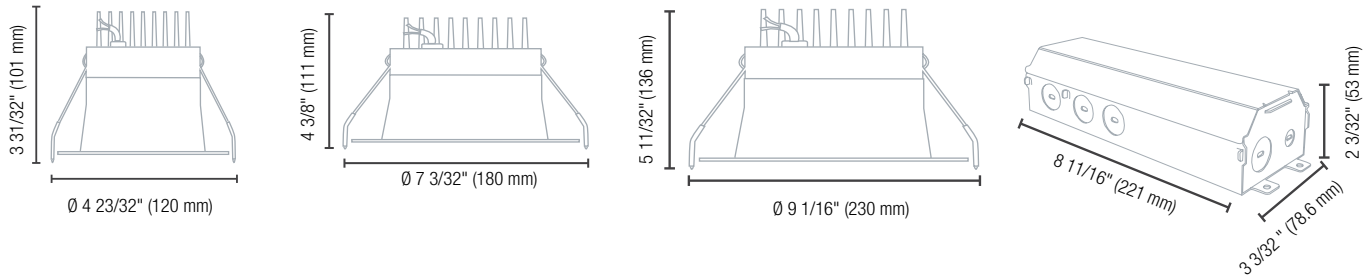
COMPATIBLE DIMMERS

Brand	Model number
Leviton	IPL710-DL
Lutron	NFTV, NTFTV

¹ Dimming range: 10%-100%

Data is based upon tests performed in a controlled environment. Actual performance can vary depending on operating conditions. All products are subject to change or may be discontinued any time without notice.

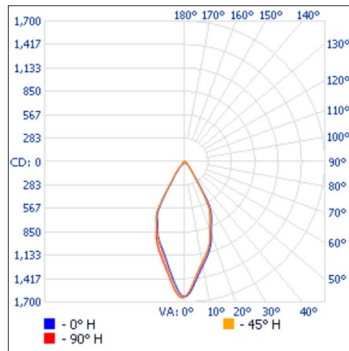
DIMENSIONS



PHOTOMETRIC DATA¹

64744 • VELOCE4/MOD/13W/30K/45/SLV/STD • 1 002.7 lm

Polar candela distribution



Zonal lumen summary

Zone	Lumens	% Fixture
0-30	749.9	79.3%
0-40	944.2	94.2%
0-60	997.4	99.5%
60-90	5.2	0.5%
0-90	1 002.7	100%

Illuminance at a distance

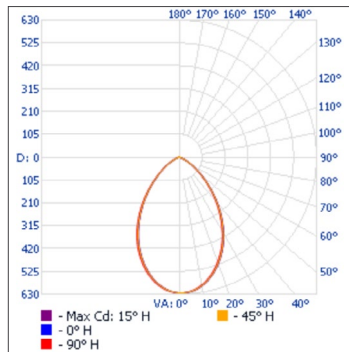
Center beam fc	Beam width
17.0'	5.65 fc
34.0'	1.41 fc
51.0'	0.63 fc
68.0'	0.35 fc
85.0'	0.23 fc
102.0'	0.16 fc

Beam width	Beam width
14.7'	14.7'
29.4'	29.4'
44.1'	44.2'
58.8'	58.9'
73.5'	76.6'
88.1'	88.3'

■ Vert. spread: 46.7°
■ Horiz. spread: 46.8°

64754 • VELOCE4/MOD/F/13W/35K/70/BLK/STD • 869.7 lm

Polar candela distribution



Zonal lumen summary

Zone	Lumens	% Fixture
0-30	421.4	48.5%
0-40	621.6	71.5%
0-60	844.4	97.1%
60-90	25.3	2.9%
0-90	869.7	100%

Illuminance at a distance

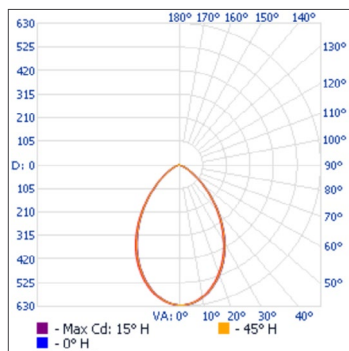
Center beam fc	Beam width
17.0'	2.16 fc
34.0'	0.54 fc
51.0'	0.24 fc
68.0'	0.13 fc
85.0'	0.09 fc
102.0'	0.06 fc

Beam width	Beam width
24.4'	24.5'
48.8'	48.9'
73.2'	73.4'
97.6'	97.9'
122.0'	122.3'
146.4'	146.8'

■ Vert. spread: 71.3°
■ Horiz. spread: 71.5°

64765 • VELOCE6/MOD/F/18W/40K/70/SLV/STD • 1 586.1 lm

Polar candela distribution



Zonal lumen summary

Zone	Lumens	% Fixture
0-30	681.0	42.9%
0-40	1 018.4	64.2%
0-60	1 502.0	94.7%
60-90	84.0	5.3%
0-90	1 586.1	100%

Illuminance at a distance

Center beam fc	Beam width
17.0'	3.55 fc
34.0'	0.89 fc
51.0'	0.39 fc
68.0'	0.22 fc
85.0'	0.14 fc
102.0'	0.10 fc

Beam width	Beam width
25.2'	25.1'
50.5'	50.2'
75.7'	75.3'
100.9'	100.4'
126.1'	125.5'
151.4'	150.6'

■ Vert. spread: 73.1°
■ Horiz. spread: 72.9°

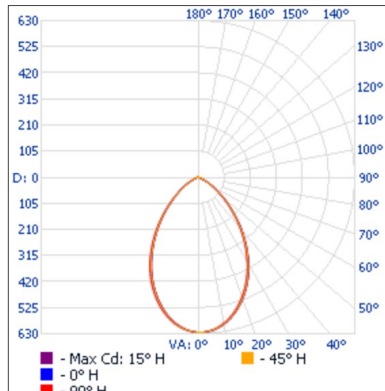
¹ Complete IES files available on our website.

Data is based upon tests performed in a controlled environment. Actual performance can vary depending on operating conditions. All products are subject to change or may be discontinued any time without notice.

PHOTOMETRIC DATA¹

64783 • VELOCE6/MOD/26W/40K/45/WH/STD • 2 444.2 lm

Polar candela distribution



Zonal lumen summary

Zone	Lumens	% Fixture
0-30	1 592.5	65.2%
0-40	2 236.4	91.5%
0-60	2 431.8	99.5%
60-90	12.4	0.5%
0-90	2 444.2	100%

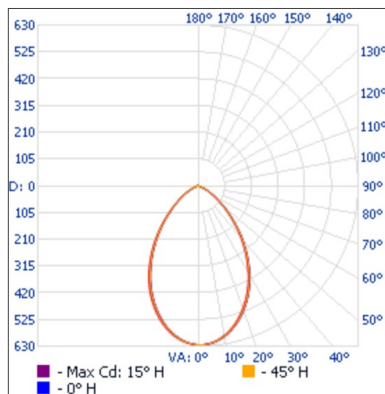
Illuminance at a distance

Center beam fc	Beam width	
	15.1'	14.6'
17.0'	11.2 fc	30.3'
34.0'	2.79 fc	29.2'
51.0'	1.24 fc	45.4'
68.0'	0.70 fc	43.8'
85.0'	0.45 fc	60.6'
102.0'	0.31 fc	75.7'
		87.5'

■ Vert. spread: 48.0°
■ Horiz. spread: 46.4°

64799 • VELOCE8/MOD/F/38W/40K/70/SLV/STD • 3 087.2 lm

Polar candela distribution



Zonal lumen summary

Zone	Lumens	% Fixture
0-30	1 422.5	46.1%
0-40	2 099.6	68%
0-60	2 999.0	97.1%
60-90	88.2	2.9%
0-90	3 087.2	100%

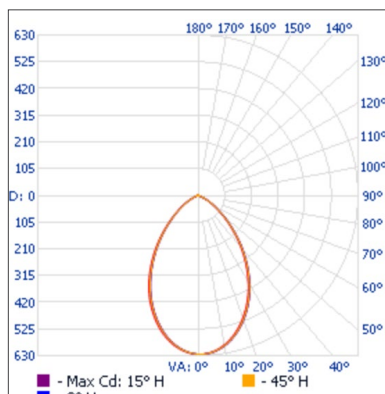
Illuminance at a distance

Center beam fc	Beam width	
	22.5'	22.5'
17.0'	7.89 fc	44.9'
34.0'	1.97 fc	45.0'
51.0'	0.88 fc	67.4'
68.0'	0.49 fc	67.5'
85.0'	0.32 fc	89.9'
102.0'	0.22 fc	112.3'
		112.5'
		134.8'
		135.0'

■ Vert. spread: 66.9°
■ Horiz. spread: 67.0°

64802 • VELOCE8/MOD/38W/40K/45/WH/STD • 3 421.9 lm

Polar candela distribution



Zonal lumen summary

Zone	Lumens	% Fixture
0-30	2 113.3	61.8%
0-40	2 953.5	86.3%
0-60	3 403.4	99.5%
60-90	18.5	0.5%
0-90	3 421.9	100%

Illuminance at a distance

Center beam fc	Beam width	
	15.9'	15.7'
17.0'	14.1 fc	31.9'
34.0'	3.53 fc	31.4'
51.0'	1.57 fc	47.8'
68.0'	0.88 fc	47.1'
85.0'	0.56 fc	63.8'
102.0'	0.39 fc	62.9'
		79.7'
		78.6'
		95.7'
		94.3'

■ Vert. spread: 50.3°
■ Horiz. spread: 49.6°

¹ Complete IES files available on our website.

Data is based upon tests performed in a controlled environment. Actual performance can vary depending on operating conditions. All products are subject to change or may be discontinued any time without notice.