

Pauluhn DuraPro hazardous area linear fluorescent luminaires

Cl. I, Div. 2, Groups A, B, C, D
Cl. I, Zone 2, Groups IIA, IIB, IIC
Cl. II, Div. 2, Groups F, G
Cl. III
Type 4; conforms to IP66

5L

Applications:

- Watertight requirements
- Dusttight requirements
- Oil and gas exploration and production
- Wastewater treatment plants
- Pipeline compressor/pumping and storage
- Maintenance and lubrication pits
- Petrochemical facilities
- High abuse areas

Features:

- Fluorescent system provides energy savings up to 50% when compared to HID
- Multi-voltage electronic ballast resistant to brownouts or voltage and frequency fluctuations
- Field replaceable lens and gasket
- Acrylic lens withstands constant exposure to sunlight and contact with petroleum-based products
- Neoprene gasket resists petroleum
- Permanent safety cable mounting points at each end
- Fixture may be mounted horizontally or vertically and rotated up to 270°
- Tool-less entry via heavy duty twist draw latches
- Lens frame hinged on side for easy lamp replacement
- Spring loaded lamp holders resist shock and vibration
- Optional self-contained emergency battery back-up ballasts
- Optional certified test switch on emergency models

Certifications and compliances:

- Class I, Division 2, Groups A, B, C, D
- Class I, Zone 2, Groups IIA, IIB, IIC
- Class II, Division 2, Groups F, G
- Class III
- UL844 – Hazardous Locations
- UL1598 – Luminaires
- CSA - Class 3428 03
- CSA - Class 3428 83
- Type 4
- Conforms to IP66

Standard materials and finishes:

- Housing – extruded aluminum with cast end caps
- Lens – clear acrylic (standard); polycarbonate (optional)
- Reflector – aluminum parabolic with an electrostatically applied powder coat finish; minimum 90% reflectance
- Gasket – one-piece neoprene
- Latches – plated steel



Technical specifications:

- Entries – 1/2" NPT through feed outlets (standard); 3/4" NPT outlets (optional)
- Lamp holder – double spring loaded
- Latches – twist draw
- Ballast – 120-277V, 50/60 Hz electronic; 347V and 480V (optional)
- Emergency battery back-up ballast – optional, self-contained 90 minute minimum for all lamp types; 120 minute minimum for F32T8 one lamp; starting temperature 32°F (0°C)

Photometrics:

- Complete photometrics can be found at www.crouse-hinds.com/photometrics

Temperature performance data:

Watts	Ballast / socket type	ANSI lamp code	Class I	Class II; Class III	Starting temperature	Maximum ambient °C ^A	Supply wire °C
17	T8 bi-pin G13	F17-T8	T5	T3C	0°F (-18°C)	55	90
32	T8 bi-pin G13	F32-T8	T5	T3C	-20°F (-29°C)	55	90
40	4-pin 2G11	FT40-CF	T5	T3C	0°F (-18°C)	55	90
24/54	T5HO mini bi-pin G5	F24/F54-T5HO	T5	N/A	-20°F (-29°C)	40	90
14/28	T5 mini bi-pin G5	F14/F28-T5	T5	T3C	0°F (-18°C)	40	90
44	T8HO RDC R17d	F48-T8HO	T4A	T3C	-20°F (-29°C)	40	90
35/60	T12HO RDC R17d	F24/F48-T12HO	T4A	T3C	-20°F (-29°C)	40	90

^AContact factory for optional higher ambient models.

Pauluhn DuraPro hazardous area linear fluorescent luminaires

Cl. I, Div. 2, Groups A, B, C, D
Cl. I, Zone 2, Groups IIA, IIB, IIC
Cl. II, Div. 2, Groups F, G
Cl. III
Type 4; conforms to IP66

5L

Ordering information:

Part number example
DP42871**

DP **4** **2** **8** **7** **1** ******

Model
DP

Length (nominal)
2 2 foot
4 4 foot

Number of lamps
2 2 lamps
3 3 lamps (lamp types 5 and 6)
4 4 lamps (lamp type 2 only)

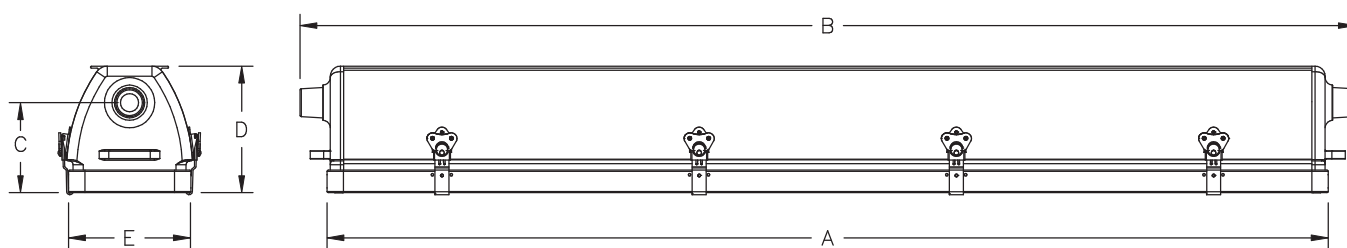
Lamp type
1 2 ft. F17 or 4 ft. F32 (T8 bi-pin)
2 2 ft. FT40 (CF 2G11)
5 2 ft. F24 or 4 ft. F54 (T5HO mini bi-pin)
6 2 ft. F14 or 4 ft. F28 (T5 mini bi-pin)
7 4 ft. F48 (T8HO RDC)
8 2 ft. F24 or 4 ft. F48 (T12HO RDC)

Voltage / frequency
7 120-277V, 50/60 Hz
6 347V, 60 Hz (contact factory)
9 480V, 60 Hz (contact factory)

Entries
1 ½" through feed NPT hubs
2 ¾" through feed NPT hubs

Options
EM1 Emergency battery back-up ballast, one lamp, 277V max.
EMT Emergency battery back-up ballast, one lamp, 277V max., test switch
L^B Lamps
P Polycarbonate lens

Dimensions:



Nominal length	Dimensions in inches / centimeters					Carton L x W x D (in.)	Nominal weight lbs. (kg.)
	A	B	C	D	E		
2 foot	26.00 (66.00)	27.60 (70.20)	4.40 (11.10)	6.30 (16.00)	6.50 (16.50)	8 3/4 x 6 1/4 x 3 1/8	23.00 (10.40)
4 foot	50.00 (127.00)	51.60 (131.10)	4.40 (11.10)	6.30 (16.00)	6.50 (16.50)	10 x 8 x 56	32.00 (14.55)

^B Lamps are not included unless option 'L' is specified.

Pauluhn DuraPro hazardous area linear fluorescent luminaires

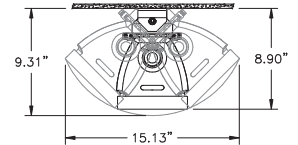
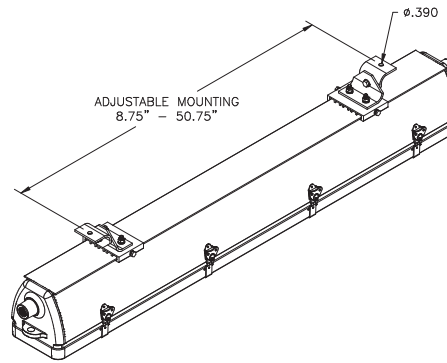
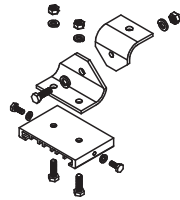
Cl. I, Div. 2, Groups A, B, C, D
Cl. I, Zone 2, Groups IIA, IIB, IIC
Cl. II, Div. 2, Groups F, G
Cl. III
Type 4; conforms to IP66

5L

Mounting options:

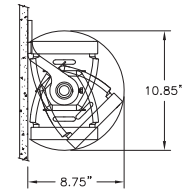
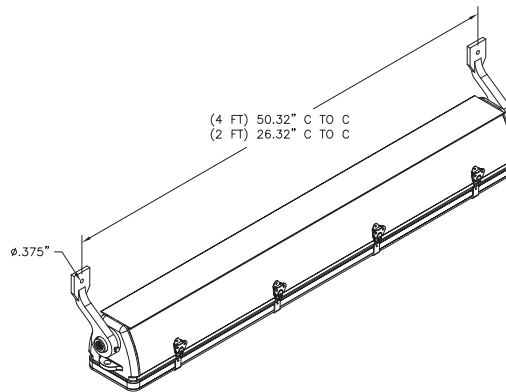
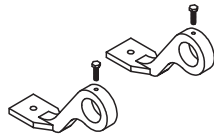
DP1050MTK

Back mount swivel kit.
Two aluminum brackets with slide mount.



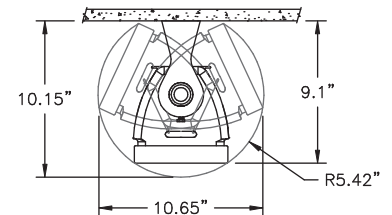
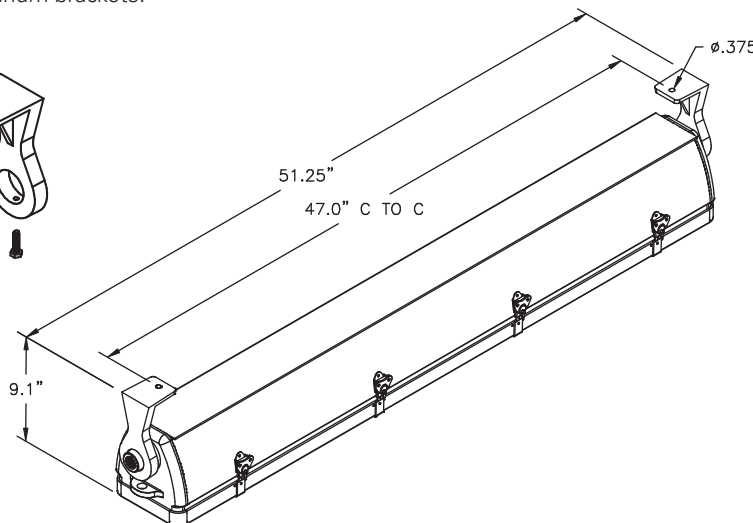
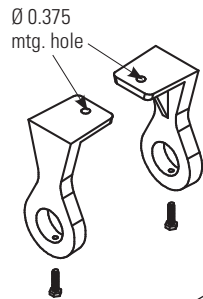
DP1052MTK

Offset wall or ceiling mounting kit.
Two cast aluminum brackets.



DP1053MTK

Ceiling or wall mounting kit.
Two cast aluminum brackets.



Ⓢ Add suffix PS for plated steel swivel brackets.