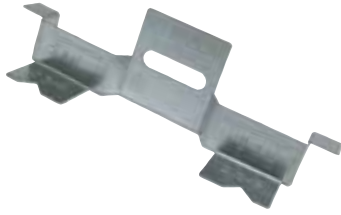


Brackets, clamps, partitions



C1820-DX



C1820D



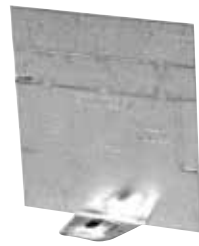
C1LRW



CILA CLAMP



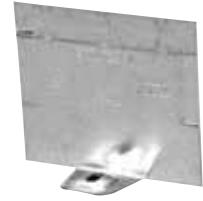
CISSX-6



CI1004-P



CI1104-P



CI2104-P



| Cat. No. | Description |
|---|--|
| Rework support brackets | |
| C1820D | Device box supports. Max. wall thickness 1 in. |
| C1820-DX | Device box support |
| C1LRW | For installing CI1104 series of boxes with ears, in closed wall "rework" applications. Complete with an 8-32 x 1 1/2 screw |
| Universal cable clamps (for BX / Loomex) | |
| CILA CLAMP | Supplied with screws |
| Support brackets | |
| CISSX-6 | Support bracket extension for 6 in. metal stud |
| Device box partitions | |
| CI1004-P | Steel partitions for 2 in., 2 1/2 in. and 3 in. deep outlet boxes |
| CI1104-P* | Steel partitions for 2 1/2 in. deep gangable boxes. To be used with CI-1104 / CI-3104 Series of boxes |
| CI2104-P | Steel partitions for 2 in. and 2 1/2 in. deep outlet boxes |

*Note: Install partition while ganging boxes

In accordance with C.E.C. 2012 Edition, Rule 12-3030: Conductors that are connected to different power or distribution transformers or other different sources of voltage shall not be installed in the same box, cabinet, or fitting unless a barrier of sheet steel not less than 1.3 mm thick or a flame-retardant nonmetallic insulating material not less than 1.6 mm in thickness is used to divide the space into separate compartments for the conductors of each system.