





Red Dot Weatherproof products

FS and FD metallic covers


Single-gang horizontal covers (cast aluminum)

	Cat. no.	Description	Std. ctn.
	CCD-FS	Grey – box mount (zinc)	50
	CFSH-G	One GFCI receptacle – box mount	25
	CWPDR-FS	One duplex receptacle – box mount	25

Single-gang vertical covers (cast aluminum)


	Cat. no.	Description	Std. ctn.
	CFSR-G	One GFCI receptacle – box mount	25

Single-gang horizontal covers (cast aluminum)

	Cat. no.	Description	Nominal size (in.)	Max. device face dia.	Std. ctn.
	CFSR-L	Single receptacle – box mount	1 7/8	1.600	25

*Gasket and screws included.

Single-gang (cast aluminum)

	Cat. no.	Description	Std. ctn.
	CFSB	Blank, box mount	100

Red Dot Weatherproof products

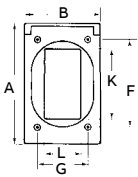
FS and FD metallic covers

Single-gang vertical covers (cast aluminum)



Cat. no.	A	B	F	G	K	L
CFSR-G	4 ⁹ / ₁₆	2 ¹³ / ₁₆	3 ³ / ₄	1 ⁷ / ₈	2 ² / ₃₂	1 ¹¹ / ₃₂

Diagram



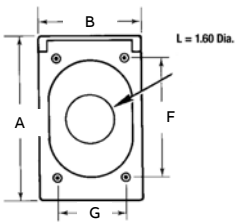
CFSR-G

Single-gang vertical covers (cast aluminum)



Cat. no.	A	B	F	G
CFSR-L	4 ⁹ / ₁₆	2 ¹³ / ₁₆	3 ³ / ₄	1 ⁷ / ₈

Diagram



CFSR Series*

*Gasket and screws included.

Red Dot Weatherproof products

FS and FD metallic covers

Two-gang

	Cat. no.	Description	Std. ctn.
2CCB	2CCB*	Grey – device mount (grey paint)	50



*cULus

Three-gang

	Cat. no.	Description	Std. ctn.
3CCB	3CCB*	Blank cover, three gang device mount	25



Covers are approved for dry locations only

*cULus

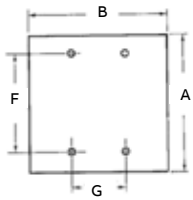
Red Dot Weatherproof products

FS and FD metallic covers

Two-gang (cast aluminum)

Cat. no.	A	B	F	G	K
2CCB	$4\frac{9}{16}$	$4\frac{5}{8}$	$3\frac{9}{32}$	$1\frac{13}{16}$	-

Diagram

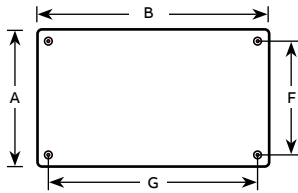


2CCB

Three-gang (stamped aluminum)

Cat. no.	A	B	F	G
3CCB	$4\frac{1}{2}$	$6\frac{3}{8}$	$3\frac{1}{4}$	$5\frac{5}{8}$

Diagram



3CCB

Covers are approved for dry locations only

Red Dot Weatherproof products

Deck grommet and stainless steel box and cover



—
Nonmetallic deck grommet

Cat. no.	Finish
DKG-CA	Black

All supplied receptacles are tamper-resistant



- 37.3 cu. in. capacity
- 316 stainless steel construction
- NEMA 3R rated
- NEMA 4X rated while not in use when properly installed
- NSF certified
- cULus Listed

—
Stainless steel while-in-use box and cover system



Cat. no.	Description	Std. ctn.
SSE	Stainless steel while-in-use box and cover system	1