

# OWP-FC-216-LED

LED Slimline Full Cut-Off Wall Pack Series

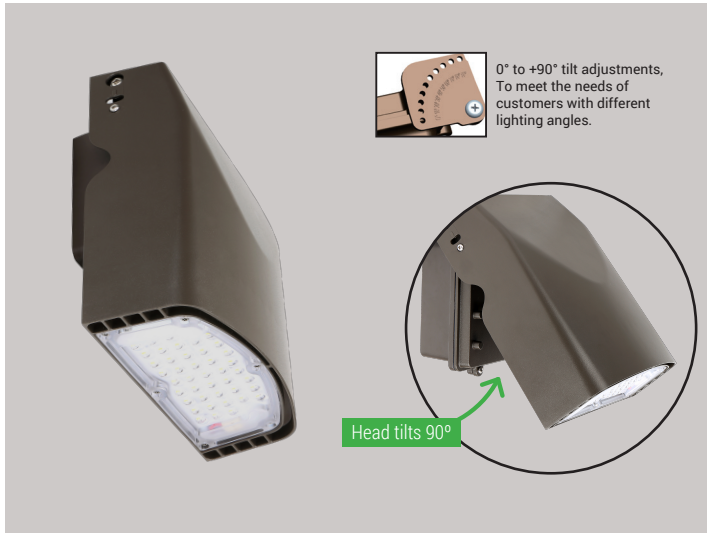
up to 90 Wattage / up to 10000 Lumens

Catalog Number:

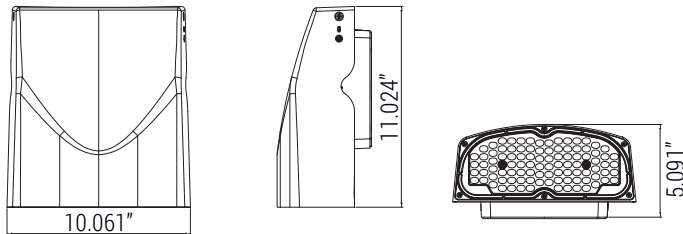
Project Name:

Note:

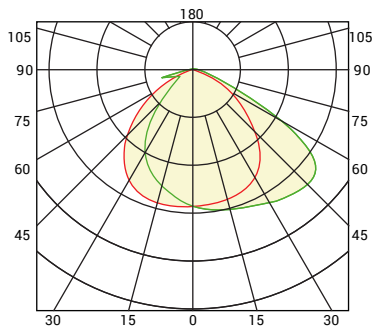
Type:



## DIMENSION:



## PHOTOMETRIC:



## APPLICATIONS:

Slim wall pack is available in two sizes for a variety of applications including building perimeter, entrances, stairways and security lighting. OWP series of luminaries provides a low-profile architectural style with the power of bright, energy efficient LEDs. It has a rugged aluminum construction with multi-mount capabilities. 0° to +90° tilt adjustments. For a building that has a modern or futuristic look.

## FEATURES:

### Construction

Sealed die-casting profile for outdoor applications.  
Suitable for applications requiring 3G testing prescribed by ANSI C136.31.

### Optics

Light engines are available in standard 3000K/4000 K and 5000 K (70 CRI) configurations.  
Scalable Lumen Packages from 3,500 to 10,500 Lumens.  
UV coated flat lens provide outstanding performance, uniformity and glare control.

### Electrical

Standard drivers feature electronic universal voltage (120-277V 50/60Hz) operation.  
Greater than 0.9 power factor, less than 20% harmonic distortion, and is suitable for operation in -40°C to 40°C ambient environments.

### Lifespan

Estimated 50,000-hour LED lifespan based on IES LM-80 results and TM-21 calculations.

### Warranty

Five-year warranty.

### Applications

Security, pathway and perimeter lighting, Building entryways and walkways.

## SPECIFICATIONS:

**LUMENS** 8600 / 10000 lumens

**WATTAGE** 67W / 80W

**CCT** 30K, 40K, 50K

**CRI** 70

**LIGHT EFFICIENCY** 128 lumens/watt

**VOLTAGE** 120-277 VAC

**POWER FREQUENCY** 50/60 Hz

**FINISH** Bronze, Black, White

**APPLICABLE ENVIRONMENT** Dry/Damp/Wet location

**WORKING TEMPERATURE** -40°C to 45°C

Ordering Guide > Example: OWP-FC-216-LED-10000L-MVOLT-40K-BZ

OWP-FC-216-LED					
SERIES	PERFORMANCE	VOLTAGE	CCT	FINISH	ACCESSORIES
OWP-FC-216-LED	8600L - 8600 lumens 10000L - 10000 lumens	MVOLT - 120/277V	30K - 3000K 40K - 4000K 50K - 5000K	BZ - Bronze BK - Black WH - White	WPPHC - Photocell