

Ordering information for XT1, XT2, XT3, XT4 UL/CSA Accessories

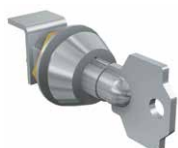
Locks



Fixed padlock

Padlock on the circuit breaker

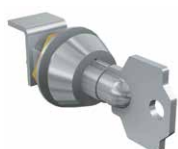
	XT1, XT3	XT2, XT4
Type	Catalog number	Catalog number
PLL removable lock with padlocks in open position	KXTBPLLREM	-
PLL fixed lock with padlocks in open position	KXTBPLLOP	KXTCPLLOP
PLL fixed lock with padlocks in open/closed position	KXTBPLLOPCL	KXTCPLLOPCL



Key lock on the circuit breaker

Key lock on the circuit breaker

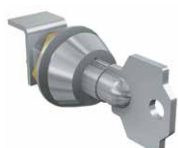
	XT1	XT3	XT2,XT4
Type	Catalog number	Catalog number	Catalog number
KLC Ronis key lock open, different keys, removable in open position	KXT1KLCCBIF	KXT3KLCCBIF	KXTCKLCCBIF
KLC Ronis key lock open, same type A keys, removable in open position	KXT1KLCCBA	KXT3KLCCBA	KXTCKLCCBA
KLC Ronis key lock open, same type B keys, removable in open position	KXT1KLCCBB	KXT3KLCCBB	KXTCKLCCBB
KLC Ronis key lock open, same type C keys, removable in open position	KXT1KLCCBC	KXT3KLCCBC	KXTCKLCCBC
KLC Ronis key lock open, same type D keys, removable in open position	KXT1KLCCBD	KXT3KLCCBD	KXTCKLCCBD
KLC Ronis key lock open/closed, different keys, removable in both positions	KXT1KLCCBOPCL	KXT3KLCCBOPCL	KXTCKLCCBOPCL



Key lock on the handle

Key lock on the rotary handle/Key lock on the front for locks

	XT1,XT3	XT2,XT4
Type	Catalog number	Catalog number
RHL Ronis key lock open, different keys, RHx	-	KXTARHLDIF
RHL Ronis key lock open, same Type A keys, RHx	-	KXTARHLA
RHL Ronis key lock open, same Type B keys, RHx	-	KXTARHLB
RHL Ronis key lock open, same Type C keys, RHx	-	KXTARHLC
RHL Ronis key lock open, same Type D keys, RHx	-	KXTARHLD
RHL Ronis key lock open/closed, different keys, RHx	-	KXTARHLOPCL
RHL Ronis key lock open/closed, different keys, FLD	-	KXTCRHLFLD



Key lock on the motor

Key lock on the motor⁽¹⁾

	XT1,XT3	XT2,XT4
Type	Catalog number	Catalog number
MOL-D Ronis key lock open, different keys	KXTBEMOLDIF	KXTCEMOLDIF
MOL-S Ronis key lock open, same type A keys	KXTBEMOLA	KXTCEMOLA
MOL-S Ronis key lock open, same type B keys	KXTBEMOLB	KXTCEMOLB
MOL-S Ronis key lock open, same type C keys	KXTBEMOLC	KXTCEMOLC
MOL-S Ronis key lock open, same type D keys	KXTBEMOLD	KXTCEMOLD
MOL-M Key lock against manual operation	-	KXTCEMOLMO

⁽¹⁾IEC rated only.



Front for operating lever mechanism

Front for operating lever mechanism

	XT2,XT4	
Type	Fixed/plug-in	Withdrawable
	Catalog number	Catalog number
FLD front for operating lever mechanism	KXTCFLDFP	KXTCFLDW



Interlock

Mechanical interlock

Type	XT1		XT2		XT3		XT4	
	Fixed	Plug-in	Fixed	Plug-in/ withdrawable	Fixed	Plug-in	Fixed	Plug-in/ withdrawable
	Catalog number	Catalog number	Catalog number	Catalog number	Catalog number	Catalog number	Catalog number	Catalog number
Chassis MIR-H	-	-	-	-	KXTAMIRHR	-	-	-
Chassis MIR-V	-	-	-	-	KXTAMIRVR	-	-	-
Plate	KXT1MIRPLF	KXT1MIRPLP	KXT2MIRPLF	KXT2MIRPLPW	KXT3MIRPLF	KXT3MIRPLP	KXT4MIRPLF	KXT4MIRPLPW

Sealable lock of thermal setting⁽¹⁾

	XT1,XT2,XT3,XT4
Type	Catalog number
Lock on thermal setting for TMA or MA trip unit	KXTAAEASEALREL

⁽¹⁾IEC rated only.