

ORDERING INFORMATION

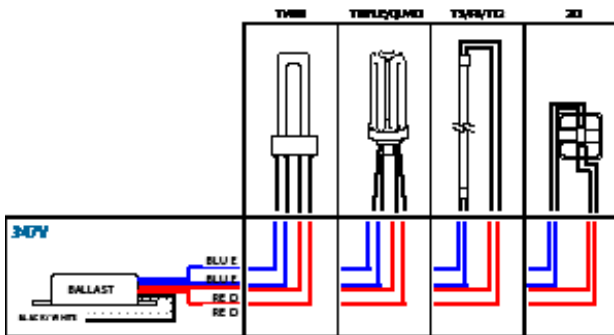
Order code: 10457
 Description: E1528-347-SL GLB
 UPC: 69549104570

SPECIFICATIONS

Ballast type:	Electronic
Starting method:	Instant Start
Lamp connection:	Series
Input voltage (V):	347 V
Input frequency (Hz):	50/60 HZ
Max. case temperature:	70 °C

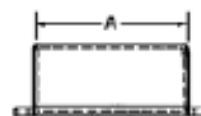
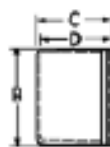
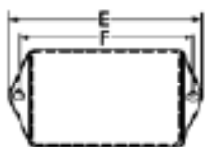


WIRING DIAGRAM



BALLAST DIMENSIONS

A	2.00" (5.08 cm)
B	1.50" (3.91 cm)
C	1.00" (2.54 cm)
D	0.93" (2.36 cm)
E	2.88" (42 cm)
F	2.50" (6.35 cm)



WARRANTY:

Ballast warranty of 5 years for electronic ballast 70-75 °C. Ballast warranty of 3 years for electronic ballast 90 °C. For more information visit our website.

Data is based upon tests performed in a controlled environment and representative of relative performance. Actual performance can vary depending on operating conditions. Specifications are subject to change without notice. March 30, 2015

ORDERING INFORMATION

Order code: 10457
 Description: E1528-347-SL GLB
 UPC: 69549104570

Lamp Type:	Number of lamps	Rated lamp watts	Min. start temp. (°F / °C)	Input current (A)	Input power (ANSI watts)	Ballast factor	Max THD (%)	Power factor	Max. lamp current crest factor	B.E.F.
347 VOLTS										
PL26/TTT (26W)	1	26	14/-10	0.10	18	0.83	6	0.50	1.4	4.60
PL18/TTT (18W)	1	18	14/-10	0.10	15	0.86	6	0.45	1.4	5.62
PL13/TTT (13W)	1	13	14/-10	0.09	14	1.09	6	0.44	1.4	7.93
PL10/TTT (10W)	1	10	14/-10	0.07	12	1.00	6	0.47	1.4	8.40
PL24/TTL (24W)	1	24	14/-10	0.10	15	0.60	6	0.46	1.4	3.92
PL18/TTL (18W)	1	18	14/-10	0.07	11	0.56	6	0.43	1.4	5.14
PL13/TT (13W)	1	13	14/-10	0.07	10	0.71	6	0.43	1.4	7.21
PL11/TT (11W)	1	11	14/-10	0.07	10	1.20	6	0.43	1.4	12.13
PL9/TT (9W)	1	9	14/-10	0.07	10	1.06	6	0.42	1.4	10.70
PL7/TT (7W)	1	7	14/-10	0.06	8	1.03	6	0.41	1.4	12.56
PL5/TT (5W)	1	5	14/-10	0.05	7	0.95	6	0.39	1.4	14.62
F28T5 (28W)	1	28	14/-10	0.15	26	1.06	6	0.51	1.4	4.13
F21T5 (21W)	1	21	14/-10	0.18	19	1.06	6	0.51	1.4	5.45
F14T5 (14W)	1	14	14/-10	0.09	15	1.06	6	0.46	1.4	7.30
F13T5 (13W)	1	13	14/-10	0.09	15	1.09	6	0.46	1.4	7.52
F8T5 (8W)	1	8	14/-10	0.07	10	0.79	6	0.43	1.4	8.14
F6T5 (6W)	1	6	14/-10	0.05	8	1.13	6	0.43	1.4	14.85
F4T5 (4W)	1	4	14/-10	0.04	6	1.06	6	0.41	1.4	18.63
F25T8 (25W)	1	25	14/-10	0.11	19	0.97	6	0.48	1.4	5.22
F18T8 (18W)	1	18	14/-10	0.08	11	0.67	6	0.43	1.4	6.04
F17T8 (17W)	1	17	14/-10	0.08	13	0.97	6	0.45	1.4	7.58
F16T8 (16W)	1	16	14/-10	0.08	11	0.84	6	0.43	1.4	7.37
F15T8 (15W)	1	15	14/-10	0.07	10	0.84	6	0.43	1.4	8.24
F14T8 (14W)	1	14	14/-10	0.06	9	0.84	6	0.42	1.4	9.23
F13T8 (13W)	1	13	14/-10	0.05	8	0.84	6	0.40	1.4	11.05
F14T12 (14W)	1	14	14/-10	0.07	9	0.79	6	0.42	1.3	8.49
F15T12 (15W)	1	15	14/-10	0.07	10	0.79	6	0.42	1.3	7.67
2D (28W)	1	28	14/-10	0.11	19	0.56	6	0.48	1.4	2.98
2D (21W)	1	21	14/-10	0.10	16	0.69	6	0.48	1.4	4.23
2D (16W)	1	16	14/-10	0.09	16	0.92	6	0.49	1.4	5.82
2D (10W)	1	10	14/-10	0.07	12	1.00	6	0.47	1.4	8.40

WARRANTY:

Ballast warranty of 5 years for electronic ballast 70-75 °C. Ballast warranty of 3 years for electronic ballast 90 °C.
 For more information visit our website.

Data is based upon tests performed in a controlled environment and representative of relative performance.
 Actual performance can vary depending on operating conditions. Specifications are subject to change without notice.

March 30, 2015