



# T8

## 12.5T8/COR/48-850/FF18/G 25/1

FlexFit (Hybrid / dual-mode) T8 LED Lamps by Philips. These lamps work as either a plug-and-play (UL Type A) or ballast bypass (UL Type B) lamp. As a Type A lamp, it is compatible with a variety of ballasts. If a ballast is not desired or fails in the field, the lamp can quickly be installed as a double-ended ballast bypass lamp.

### Product data

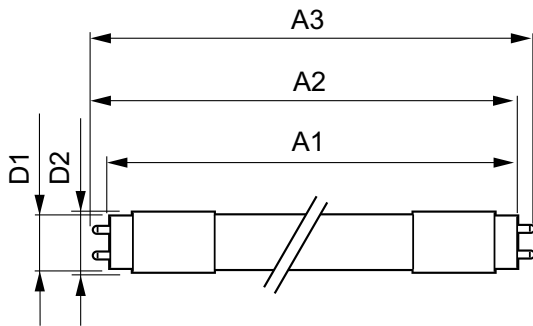
General Information		Starting Time (Nom)	
Base	G13 [ Medium Bi-Pin Fluorescent]		0.5 s
EU RoHS compliant	Yes	Warm Up Time to 60% Light (Nom)	0.5 s
Nominal Lifetime (Nom)	50000 h	Power Factor (Nom)	0.9
Switching Cycle	50000X	Voltage (Nom)	120-277 V
Technical Type	12.5;13-32W		
Light Technical		Temperature	
Color Code	850 [ CCT of 5000K]	T-Ambient (Max)	45 °C
Beam Angle (Nom)	240 °	T-Ambient (Min)	-20 °C
Initial lumen (Nom)	1800 lm	T-Storage (Max)	65 °C
Color Designation	Daylight	T-Storage (Min)	-40 °C
Correlated Color Temperature (Nom)	5000 K	T-Case Maximum (Nom)	60 °C
Luminous Efficacy (rated) (Nom)	144.00 lm/W	Controls and Dimming	
Color Consistency	<5	Dimmable	No
Color Rendering Index (Nom)	82	Mechanical and Housing	
LLMF At End Of Nominal Lifetime (Nom)	70 %	Bulb Finish	Frosted
		Bulb Material	Glass
		Product Length	48 in
Operating and Electrical		Approval and Application	
Input Frequency	50 to 60 Hz	Energy Saving Product	Yes
Power (Rated) (Nom)	12.5 13 W		
Lamp Current (Max)	110 mA		
Lamp Current (Min)	45 mA		

# T8

<b>Approbation Marks</b>	RoHS compliance UL certificate DLC compliance
<b>Product Data</b>	
Order product name	12.5T8/COR/48-850/FF18/G 25/1
EAN/UPC - Product	046677600198
Order code	600197

<b>Numerator - Quantity Per Pack</b>	1
<b>Numerator - Packs per outer box</b>	25
<b>Material Nr. (12NC)</b>	929002317404
<b>Net Weight (Piece)</b>	0.180 kg
<b>Model Number</b>	9290023174

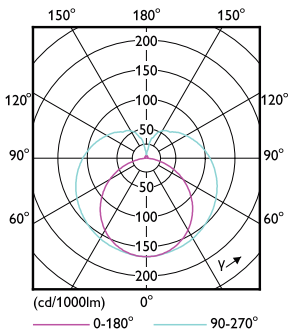
## Dimensional drawing



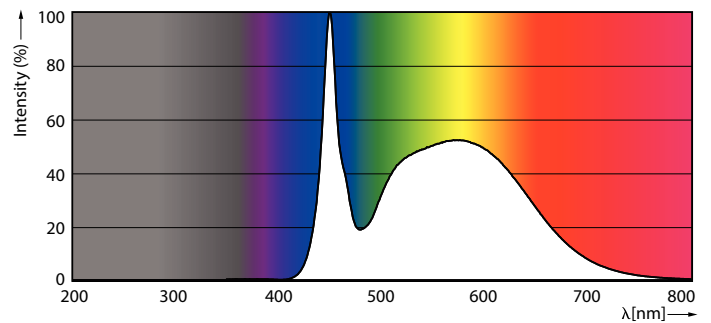
Type A+B corepro 1800lm 14W 5000k DLC

Product	D1	D2	A1	A2	A3
12.5T8/COR/48-850/FF18/G 25/1	25.7 mm	28 mm	1198.2 mm	1205.3 mm	1212.4 mm

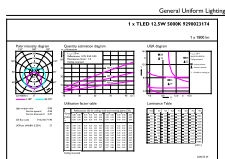
## Photometric data



LEDtube COR 12,5W G13

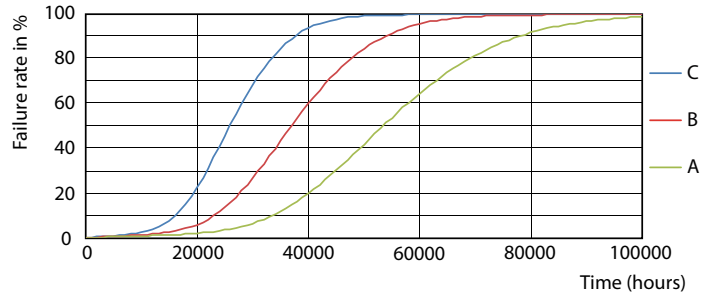
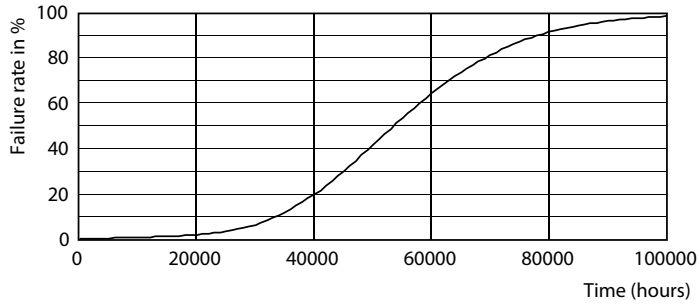


LEDtube COR 12,5W G13 1800lm 850



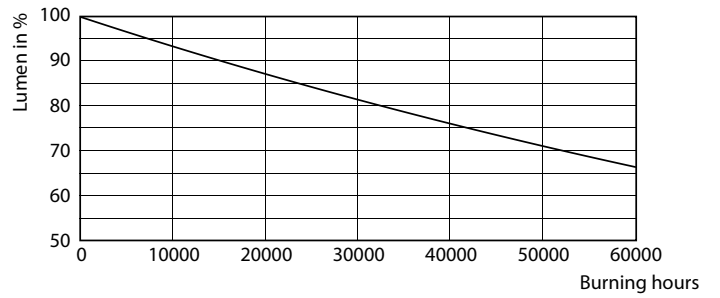
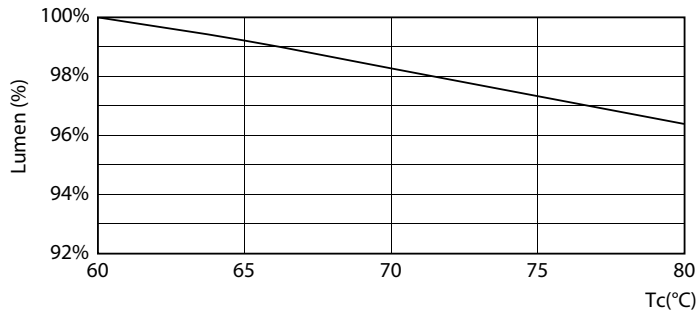
LEDtube COR 12,5W G13 1800lm 850

Lifetime



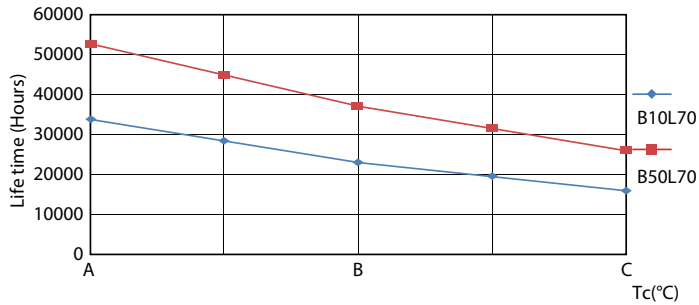
LEDtube 50K-LED

LEDtube 50K FailureRate-LED



LEDtube 12,5W 50K 1 LumenVsTc

LEDtube 50K-LMP



LEDtube 50K LifetimeVsTc-LED