



# T8

## 12.5T8/COR/48-835/FF18/G 25/1

FlexFit (Hybrid / dual-mode) T8 LED Lamps by Philips. These lamps work as either a plug-and-play (UL Type A) or ballast bypass (UL Type B) lamp. As a Type A lamp, it is compatible with a variety of ballasts. If a ballast is not desired or fails in the field, the lamp can quickly be installed as a double-ended ballast bypass lamp.

### Product data

General Information	
Base	G13 [ Medium Bi-Pin Fluorescent]
EU RoHS compliant	Yes
Nominal Lifetime (Nom)	50000 h
Switching Cycle	50000X
Technical Type	12.5;13-32W
Light Technical	
Color Code	835 [ CCT of 3500K]
Beam Angle (Nom)	240 °
Initial lumen (Nom)	1700 lm
Color Designation	White (WH)
Correlated Color Temperature (Nom)	3500 K
Luminous Efficacy (rated) (Nom)	136.00 lm/W
Color Consistency	<6
Color Rendering Index (Nom)	82
LLMF At End Of Nominal Lifetime (Nom)	70 %
Operating and Electrical	
Input Frequency	50 to 60 Hz
Power (Rated) (Nom)	12.5 13 W
Lamp Current (Max)	110 mA
Lamp Current (Min)	45 mA

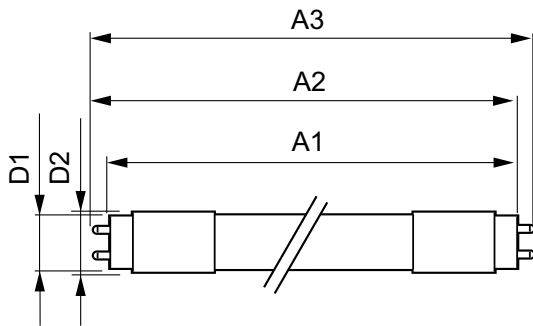
Starting Time (Nom)	0.5 s
Warm Up Time to 60% Light (Nom)	0.5 s
UL Type	Type A+B - works with or without a ballast
Power Factor (Nom)	0.9
Voltage (Nom)	120-277 V
Temperature	
T-Ambient (Max)	45 °C
T-Ambient (Min)	-20 °C
T-Storage (Max)	65 °C
T-Storage (Min)	-40 °C
T-Case Maximum (Nom)	60 °C
Controls and Dimming	
Dimmable	No
Mechanical and Housing	
Bulb Finish	Frosted
Bulb Material	Glass
Product Length	48 in
Approval and Application	
Energy Saving Product	Yes

# T8

<b>Approbation Marks</b>	RoHS compliance UL certificate DLC compliance
<b>Product Data</b>	
Order product name	12.5T8/COR/48-835/FF18/G 25/1
EAN/UPC - Product	046677560195
Order code	560193

<b>Numerator - Quantity Per Pack</b>	1
<b>Numerator - Packs per outer box</b>	25
<b>Material Nr. (12NC)</b>	929002402204
<b>Net Weight (Piece)</b>	0.180 kg
<b>Model Number</b>	9290024022

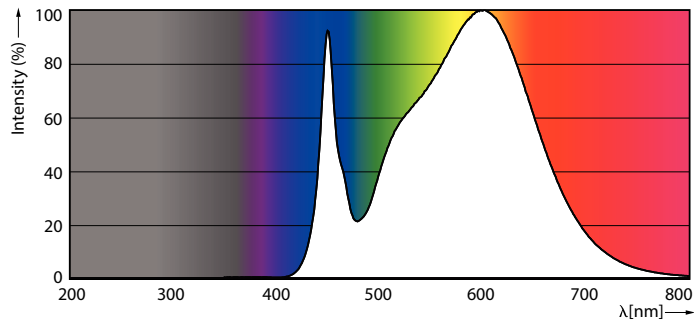
## Dimensional drawing



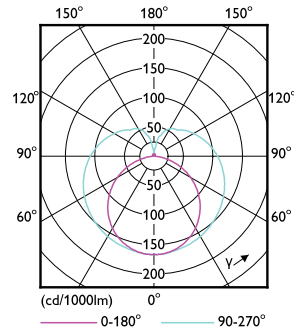
Type A+B corepro 1800lm 14W 3500k DLC

Product	D1	D2	A1	A2	A3
12.5T8/COR/48-835/FF18/G 25/1	25.7 mm	28 mm	1198.2 mm	1205.3 mm	1212.4 mm

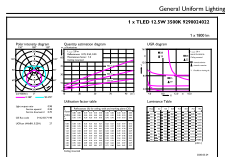
## Photometric data



LEDtube COR 12,5W G13 1700lm 835



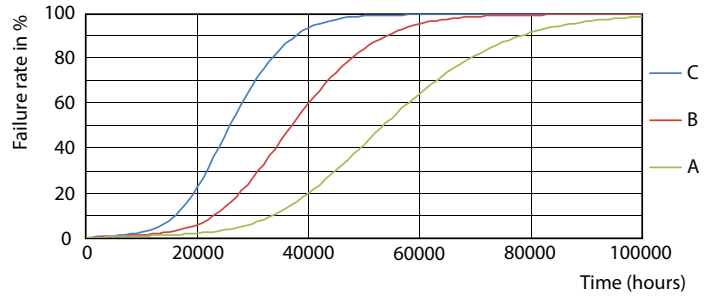
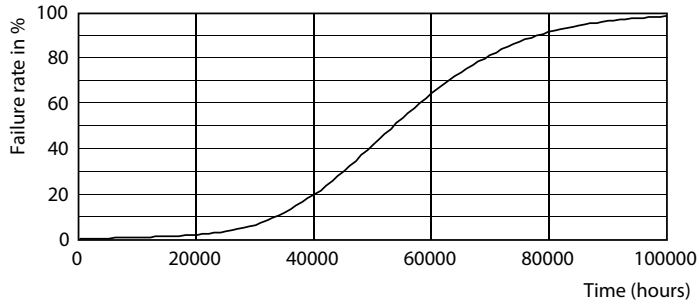
LEDtube COR 12,5W G13



© 2020 Philips Lighting B.V. All rights reserved. Page 1/1

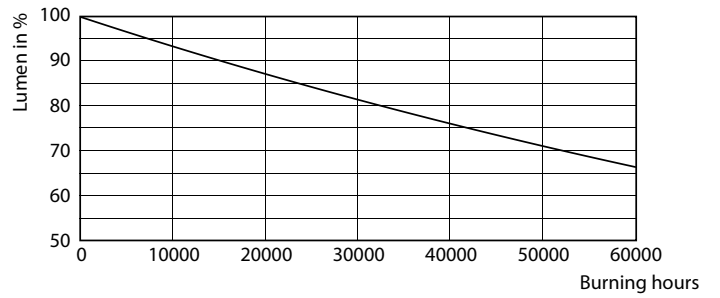
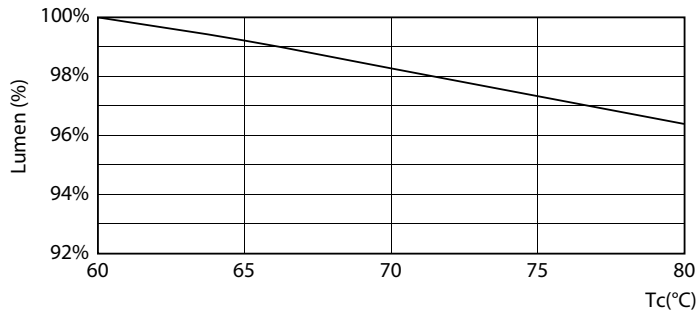
LEDtube COR 12,5W G13 1700lm 835

Lifetime



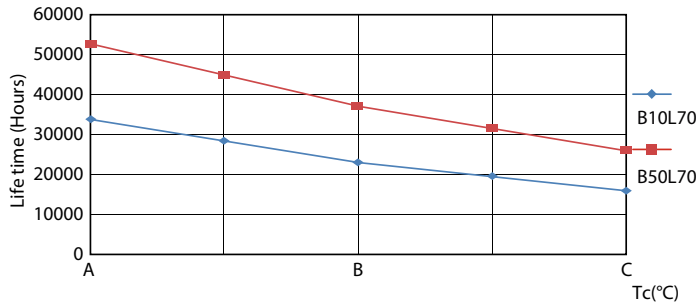
LEDtube 50K-LED

LEDtube 50K FailureRate-LED



LEDtube 12,5W 50K 1 LumenVsTc

LEDtube 50K-LMP



LEDtube 50K LifetimeVsTc-LED