



T8

12.5T8/COR/48-840/FF18/G 25/1

FlexFit (Hybrid / dual-mode) T8 LED Lamps by Philips. These lamps work as either a plug-and-play (UL Type A) or ballast bypass (UL Type B) lamp. As a Type A lamp, it is compatible with a variety of ballasts. If a ballast is not desired or fails in the field, the lamp can quickly be installed as a double-ended ballast bypass lamp.

Product data

General Information	
Base	G13 [Medium Bi-Pin Fluorescent]
EU RoHS compliant	Yes
Nominal Lifetime (Nom)	50000 h
Switching Cycle	50000X
Technical Type	12.5;13-32W
Light Technical	
Color Code	841 [CCT of 4100K (841)]
Beam Angle (Nom)	240 °
Initial lumen (Nom)	1800 lm
Color Designation	Cool White (CW)
Correlated Color Temperature (Nom)	4000 K
Luminous Efficacy (rated) (Nom)	144.00 lm/W
Color Consistency	<6
Color Rendering Index (Nom)	82
LLMF At End Of Nominal Lifetime (Nom)	70 %
Operating and Electrical	
Input Frequency	50 to 60 Hz
Power (Rated) (Nom)	12.5 13 W
Lamp Current (Max)	110 mA
Lamp Current (Min)	45 mA

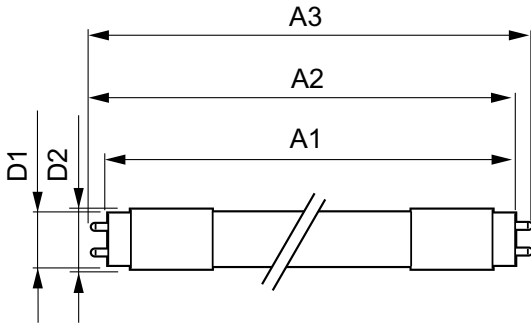
Starting Time (Nom)	0.5 s
Warm Up Time to 60% Light (Nom)	0.5 s
UL Type	Type A+B - works with or without a ballast
Power Factor (Nom)	0.9
Voltage (Nom)	120-277 V
Temperature	
T-Ambient (Max)	45 °C
T-Ambient (Min)	-20 °C
T-Storage (Max)	65 °C
T-Storage (Min)	-40 °C
T-Case Maximum (Nom)	60 °C
Controls and Dimming	
Dimmable	No
Mechanical and Housing	
Bulb Finish	Frosted
Bulb Material	Glass
Product Length	48 in
Approval and Application	
Energy Saving Product	Yes

T8

Approbation Marks	RoHS compliance UL certificate DLC compliance
Product Data	
Order product name	12.5T8/COR/48-840/FF18/G 25/1
EAN/UPC - Product	046677600181
Order code	600189

Numerator - Quantity Per Pack	1
Numerator - Packs per outer box	25
Material Nr. (12NC)	929002317304
Net Weight (Piece)	0.180 kg
Model Number	9290023173

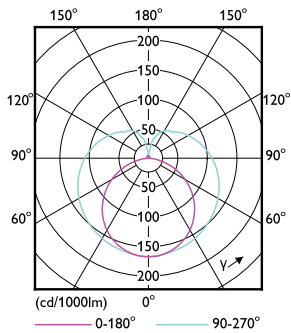
Dimensional drawing



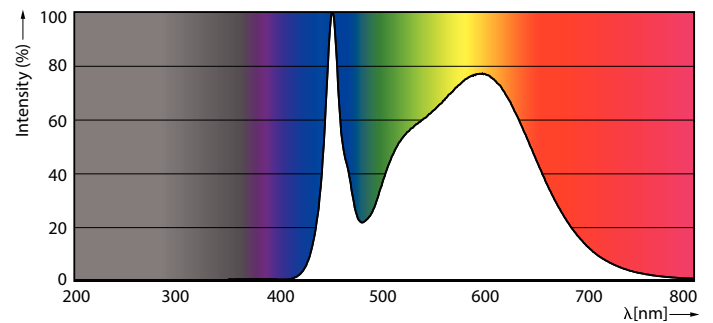
Type A+B corepro 1800lm 14W 4000k DLC

Product	D1	D2	A1	A2	A3
12.5T8/COR/48-840/FF18/G 25/1	25.7 mm	28 mm	1198.2 mm	1205.3 mm	1212.4 mm

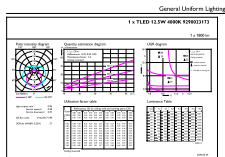
Photometric data



LEDtube COR 12,5W G13

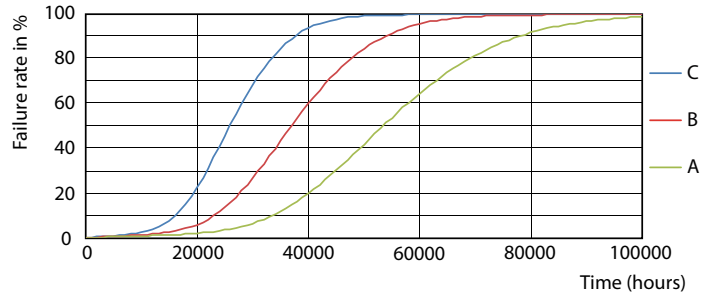
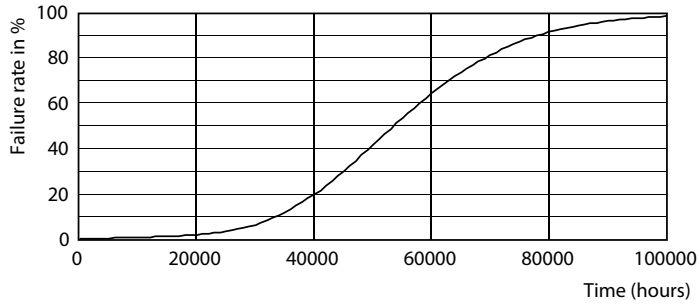


LEDtube COR 12,5W G13 1800lm 840



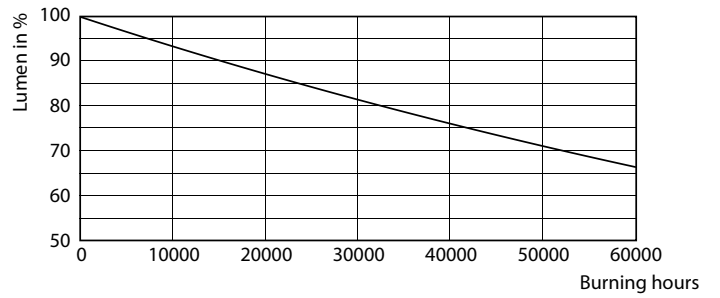
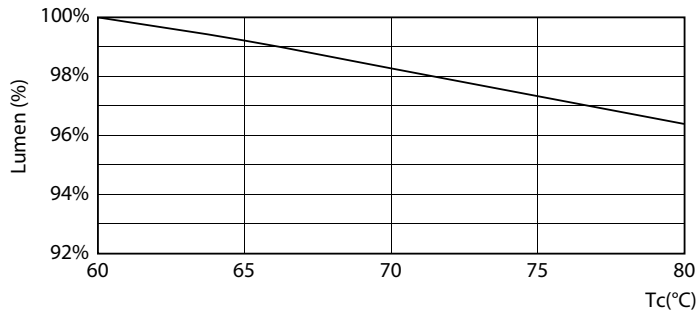
LEDtube COR 12,5W G13 1800lm 840

Lifetime



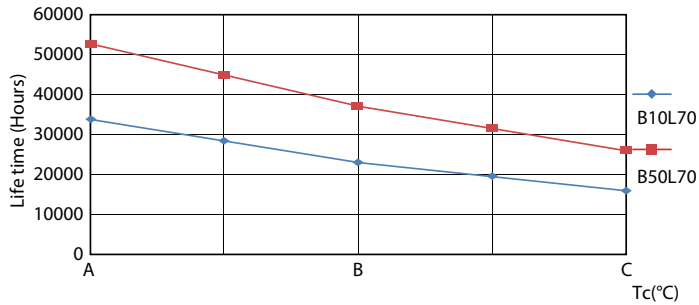
LEDtube 50K-LED

LEDtube 50K FailureRate-LED



LEDtube 12,5W 50K 1 LumenVsTc

LEDtube 50K-LMP



LEDtube 50K LifetimeVsTc-LED