

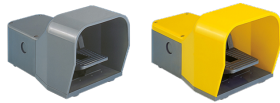


Catalog No. 1SBV002105R1122

Description: IPSY1A22 Foot Switch

UPC No 3471522009692

Home > Electronic Relays & Controls > Limit Switches



Representative Image

Descriptors

Category	Limit Switches
----------	----------------

Specifications

Product Main Type	Foot Switches
Number and Type of Bottom Cable Glands	Pg 16 Cable Gland
Number of Auxiliary Contacts NC	2
Number of Auxiliary Contacts NO	2
Action Type of the Contact Element (acc. to IEC 60947-5-1)	snap action contacts
Ambient Air Temperature	Operation -10 ... +70 °C Storage -30 ... +80 °C
Resistance to Vibrations acc. to IEC 60068-2-6	25g (10 to 500 Hz) no change in position of contacts greater than 100 µs
Resistance to Shock acc. to IEC 60068-2-27	Half-sine Pulse for 11 ms, No Change in Contact Position 50 m/s ²
RoHS Status	Following EU Directive 2011/65/EU
Pilot Duty of Contact Elements acc. UL508	A600/Q600
Flammability According to UL94	V-0
Actuation Torque	acc. to IEC 60947-5-1 Min. 0.25 N-m
Cable Outlets Per Side	1 pre-pressed Pg16 knockout on each side

Dimensions

Product Net Width	140 mm
Product Net Height	138 mm
Product Net Depth / Length	280 mm
Product Net Weight	1.2 kg

Package Information

Package Level 1 Units	1 piece
Package Level 1 Width	160 mm
Package Level 1 Height	160 mm
Package Level 1 Depth / Length	300 mm
Package Level 1 Gross Weight	1.37 kg

by ABB

Package Information

Package Level 1 EAN	3471522009692
Package Level 2 Units	1 piece
Package Level 2 Gross Weight	1.1 kg

Ordering

Minimum Order Quantity	1
Customs Tariff Number	85364900
Base Color	Grey