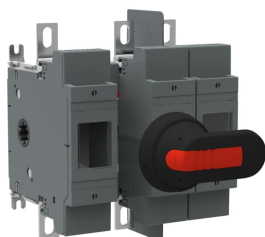


PRODUCT-DETAILS

OS200J12P

OS200J12P FUSIBLE DISCONNECT SWITCH



General Information

Extended Product Type	OS200J12P
Product ID	1SCA022758R8020
EAN	6417019247175
Catalog Description	OS200J12P FUSIBLE DISCONNECT SWITCH
Long Description	Switch Fuses,Front Operated,3-pole,12 (Between the Poles),Class J,200 A,Handle and shaft included,

Ordering

Customs Tariff Number	85365080
-----------------------	----------

Popular Downloads

Data Sheet, Technical Information	1SCC311096D0201
Instructions and Manuals	1SCC311012M0219

Dimensions

Product Net Width	182 mm
Product Net Height	218 mm
Product Net Depth /	132 mm

Length

Product Net Weight	2.8 kg 6.3 lb
--------------------	------------------

Technical

Rated Operational Current AC-21A (I_e)	(500 V) 200 A (690 V) 200 A
Rated Operational Current AC-22A (I_e)	(380 ... 415 V) 200 A (500 V) 200 A (690 V) 200 A
Rated Operational Current AC-23A (I_e)	(380 ... 415 V) 200 A (500 V) 200 A (690 V) 200 A
Rated Operational Power AC-23A (P_e)	(220 ... 240 V) 60 kW (400 V) 110 kW (415 V) 110 kW (500 V) 132 kW (690 V) 200 kW
Conventional Free-air Thermal Current (I_{th})	q = 40 °C 200 A
Conventional Thermal Current (I_{the})	Fully Enclosed 200 A
Rated Impulse Withstand Voltage (U_{imp})	12 kV
Rated Insulation Voltage (U_i)	1000 V
Rated Operational Voltage	500 V
Rated Short-time Withstand Current (I_{cw})	for 1 s 8 kiloampere rms
Rated Conditional Short-Circuit Current (I_{nc})	(690 V) 80 kA
Power Loss	at Rated Operating Conditions per Pole 17 W
Pollution Degree	3
Handle Type	Pistol handle and shaft included
Switches Operating Mechanism	12 (Between the Poles)
Position of Line Terminals	Top In - Bottom Out, Bottom In - Top Out
Fuse Size	200 A
Fuse System	Class J
Operating Mode	Front Operated
Standards	UL98 IEC 60947-3
Mounting Type	Base mounting
Number of Poles	3
Terminal Type	Lug terminals
Terminal Width	20 mm
Tightening Torque	15 ... 22 N·m

Technical UL/CSA

Horsepower Rating UL/CSA	(acc. to UL 240 V) 60 Hp (acc. to UL 480 V) 125 Hp (acc. to UL 600 V) 150 Hp
Ampere Rating UL/CSA	200 A
Tightening Torque UL/CSA	Wire-Clamp 275 in·lb Cable Lug 72 in·lb

Certificates and Declarations (Document Number)

CCC Certificate	CCC OS200-250 2016
Declaration of Conformity - CE	1SCC311091D2704
DNV GL Certificate	1SCC311123D0203
EAC Certificate	EAC OT_OTDC_OTL_OTP_OTR_OTU_OTE_OETL_OESA_OESC_OTM_OS_OSM_ pd f
Instructions and Manuals	1SCC311012M0219
RoHS Information	1SCC311108D0203

Container Information

Package Level 1 Units	1 piece
Package Level 1 Width	230 mm 9.1 in
Package Level 1 Depth / Length	270 mm 10.6 in
Package Level 1 Height	170 mm 6.7 in
Package Level 1 Gross Weight	3.1 kg 6.9 lb
Package Level 1 EAN	6417019247175

Classifications

Object Classification Code	Q
ETIM 4	EC001040 - Fuse switch disconnecter
ETIM 5	EC001040 - Fuse switch disconnecter
ETIM 6	EC001040 - Fuse switch disconnecter
ETIM 7	EC001040 - Fuse switch disconnecter
UNSPSC	39122233
WEEE Category	5. Small Equipment (No External Dimension More Than 50 cm)

Categories

Low Voltage Products and Systems → Switches → Switch Fuses

