

## CABLOFIL<sup>®</sup> BOX BRACKETS – Components to Make Pre-Fabrication Easy!

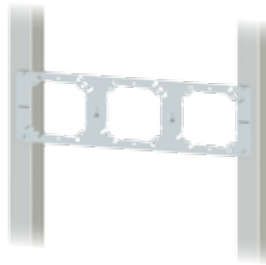
Versatile box brackets for every application. Cablofil<sup>®</sup> box brackets are available for walls, floors and for concrete block walls. Easy to use components make prefabrication of electrical assemblies for branch circuit wiring simple and cost effective. Cablofil box brackets in many cases are adjustable to fit multiple wall thicknesses and depths reducing the number of parts needed on the jobsite. Making Cablofil box brackets the perfect choice for projects with tight schedules.

### FEATURES

- Each component is designed to install quickly without modification and with simple attachment hardware
- Components are pre-galvanized for interior applications
- For use with 4" square and 4-11/16" boxes



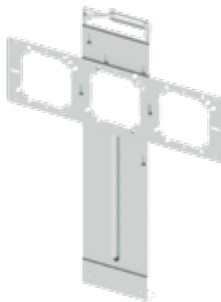
TELESCOPING BOX BRACKETS



WALL BRACKETS



CEILING BRACKETS



FLOOR BRACKETS



CONCRETE WALL BRACKETS



PLASTER RINGS

## Versatility for any location.

### TELESCOPING BOX BRACKETS

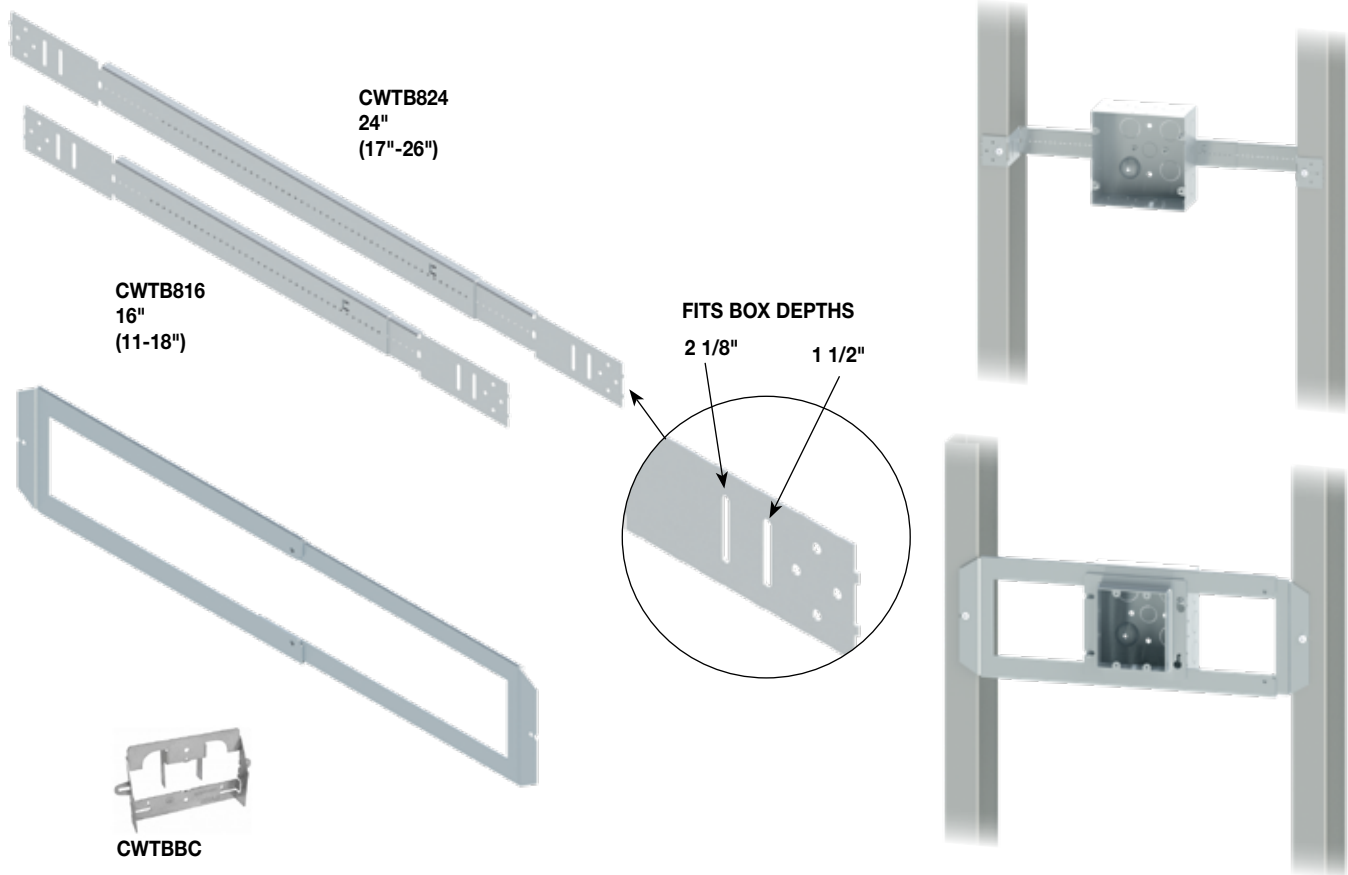
Available in two sizes, this sturdy bracket can be used for mounting boxes or for cable support. Openings allow for easy box mounting and mounting to the stud. End tabs easily fold to fit multiple box depths. The length is locked into place when the box is mounted using two screws (not supplied). These brackets offer offsets of 1-1/2" and 2-1/8".

### TELESCOPING BOX SUPPORT

For heavier loads or multiple box placements, this support is the answer. Fits 16" to 24" stud placements and anything in between – no cutting or field fabrication is needed. Any 4-11/16" box mounts from the back and is secured when the plaster ring is attached from the front side. Side-to-side adjustment is easy after mounting.

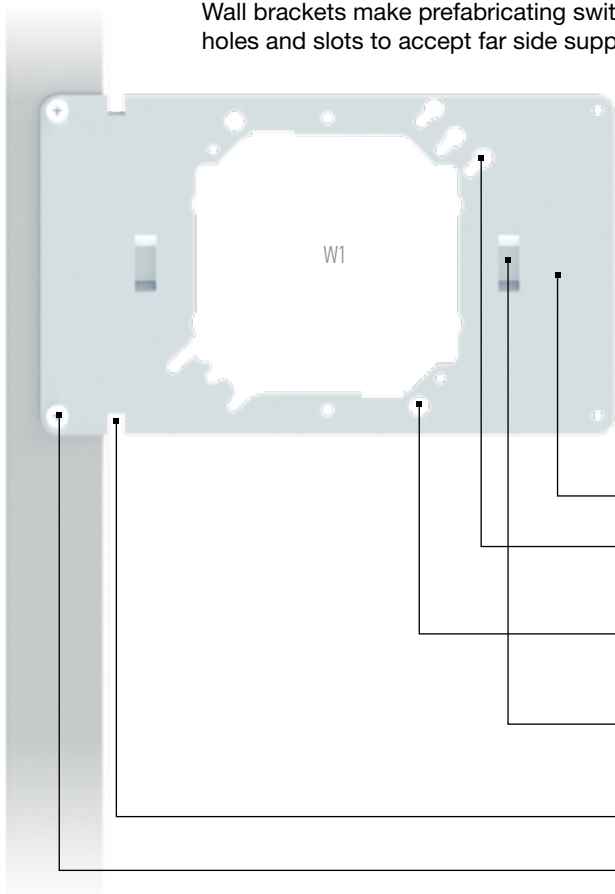
### ADJUSTABLE SLIDER BRACKET

Attaches to slider bracket for ease of repositioning of electrical boxes. Allows closer installation of multiple electrical boxes between studs. Ideal for pre-fab assemblies.



TELESCOPING BOX BRACKETS									
	DESCRIPTION	PKG QTY	MIN LENGTH		MAX LENGTH		PKG WEIGHT		PG
			IN	MM	IN	MM	LBS	KG	
<b>CWTBB16</b>	Telescoping Box Bracket	50	11	270	18	450	25	55	F000065
<b>CWTBB24</b>	Telescoping Box Bracket	50	17	430	26	660	33	73	F000066
<b>CWTBB</b>	Telescoping Support Bracket	25	16	400	27	685	20	44	F000067
<b>CWTBBC</b>	Slider Bracket	50					8.2	3.718	F002161

Wall brackets make prefabricating switch and outlet assemblies easy. The design includes mounting holes and slots to accept far side supports (sold separately).



**Construction:** 18 gage pre-galvanized steel. UL Listed.

**Prefabrication:** The design accepts 4" and 5" plaster rings and 4", 4-11/16" and 5" square boxes mounted horizontally or vertically.

**Installation:** Pre-drilled holes are provided for attachment screws to the studs. Far Side Support Arms attach to the back of the bracket to support the assembly against the wall behind. No attachment hardware is needed.

**Symmetrical design allows simpler and easier prefab**

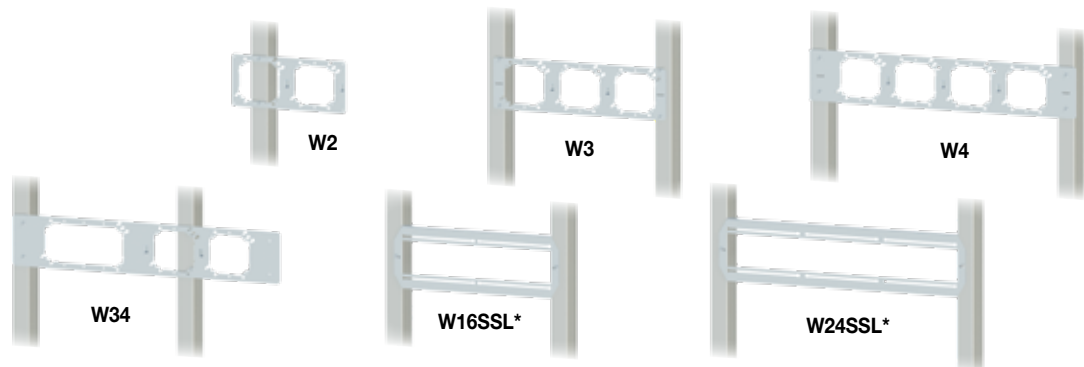
**Keyhole Openings allow 4", 4-11/16" and 5" x 2-1/8" boxes to remain attached when plaster ring is removed**

**Counter Sunk Box Attachment Holes for 4-11/16" x 2-1/8" boxes allow 4" rings to be mounted independently**

**Support Arms are attached to the back of the bracket using the two slots provided**

**Stud alignment tabs - (W1, W34, W4 only)**

**Wall Bracket attachment holes**



- Wall brackets accept 4" and 5" plaster rings and 4", 4-11/16" and 5" square boxes mounted horizontally or vertically.
- Keyhole openings allow 4", 4-11/16" and 5" x 2-1/8" boxes to be mounted independently.
- Pre-drilled for attachment with screws to the studs.
- Built-in slots accept supports arms to brace the assembly against the wall behind. (sold separately)
- Sliding wall brackets with infinite box positioning are available for 16" to 24" stud widths.
- UL Listed.



WALL BRACKETS						
	OPENINGS	HEIGHT		WIDTH		PG
		IN	MM	IN	MM	
<b>W1</b>	1	5	125	8.5	215	FP211097
<b>W2</b>	2	5	125	11	280	FP211101
<b>W3</b>	3	5	125	16.75	425	FP211103
<b>W4</b>	4	5	125	26	660	FP211105
<b>W34</b>	3	5	125	26	660	FP211104
<b>W16SSL*</b>	16" Slider	6	150	16.75	425	FP211100
<b>W24SSL*</b>	24" Slider	6	150	26	660	FP211102

\* 16" and 24" slider brackets allow electrical boxes to be adjusted horizontally