

1P

# Arktite® Heavy Duty Circuit Breaking Receptacle Assemblies and Housings

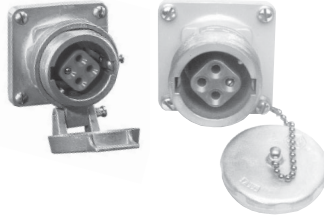
NEMA 4 Watertight

30 A, 600 VAC/250 VDC, 50† – 400 hertz

## Ordering Information:



Receptacle Assembly



Receptacle



Mating Plug



Mating Connector

With ARE Back Boxes

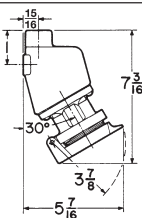
Receptacle Housings Only

Mating APJ Plugs†

Mating APR Connectors

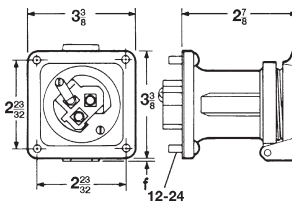
Description	Hub Size (In.)	Spring Door Cat. #	Spring Door Cat. #	Threaded Cap Only Cat. #	Cat. #	Cable Dia.	Cat. #	Cable Dia.
<b>Style 1</b>								
2-wire, 2-pole }	1/2	ARE3211	AR321	AR327	APJ3275	0.39 to 1.20	APR3255	0.39 to 1.20
3-wire, 3-pole }	3/4	ARE3312	AR331	AR337	APJ3375	0.39 to 1.20	APR3355	0.39 to 1.20
4-wire, 4-pole }	1	ARE3412	AR341	AR347	APJ3475	0.39 to 1.20	APR3455	0.87 to 1.20
5-wire, 5-pole }	1	ARE3513	AR351		APJ3573	.500 to .875	APR3553	.500 to .875
<b>Style 2</b>								
2-wire, 3-pole }	3/4	ARE3322	AR332	AR338	APJ3385	0.39 to 1.20	APR3365	0.39 to 1.20
3-wire, 4-pole }	1	ARE3422	AR342	AR348	APJ3485	0.39 to 1.20	APR3465	0.39 to 1.20
4-wire, 5-pole }	1	ARE3523	AR352		APJ3583 APJ3585	.500 to .875 .875 to 1.375	APR3563 APR3565	.500 to .875 .875 to 1.375

## Dimensions In Inches:

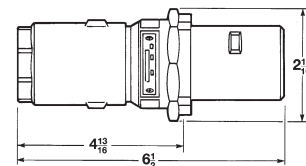


30A  
2,3 and 4 POLE

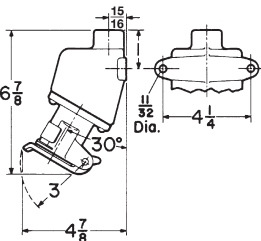
ARE Assembly



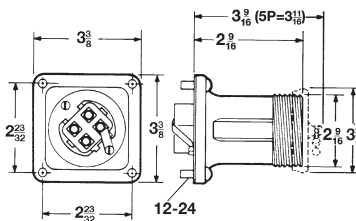
AR Receptacle - Spring Door



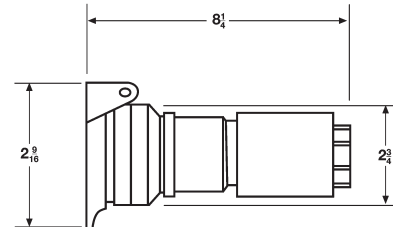
Plug



30 A  
5 POLE



AR Receptacle - Open and With Cap



Connector

†For use on systems less than 60 hertz the receptacles, plugs and connectors are for disconnect use only.

1P

# Arktite® Heavy Duty Circuit Breaking Receptacle Assemblies and Housings

NEMA 4 Watertight

1P

30 A, 600 VAC/250 VDC, 50† – 400 hertz

## Plug Closure Caps:

### Applications:

CPK caps for Arktite plugs are used:

- Where portable equipment is on a standby basis and plugs are not in use
- To effectively protect insulation and contacts from excessive moisture, dirt, dust and corrosion
- With 30, 60, 100, 150 and 200 ampere plugs with fastening ring and standard 200 ampere plugs for the clamp door housing



### Ordering Information:

Config.	Cat. #
2P & 3P & 4P	CPK13
5P	CPK32

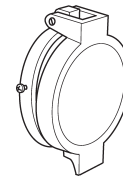
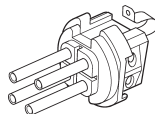
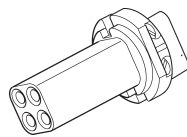
### Standard Materials:

- Copper-free aluminum

### Standard Finishes:

- Natural

### Replacement Parts:



Config.	Receptacle Interior	Plug Interior	Spring Door	Screw Cap
2W 2P	ATP275	ATP270	QE50	QE13
2W 3P	ATP278	ATP273		
3W 3P	ATP276	ATP271		
3W 4P	ATP279	ATP274		
4W 4P	ATP277	ATP272	N/A	N/A
4W 5P	ATP125	ATP109		
5W 5P	ATP94	ATP73		

### Replacement Pin & Sleeve Contacts:

Description	Recep	Plug
Available as a kit only. 5 phase contacts & 1 ground contact included.	AR30CONKIT	AP30CONKIT

†For use on systems less than 60 hertz the receptacles, plugs and connectors are for disconnect use only.

1P

60 A, 600 VAC/250 VDC, 50† – 400 hertz

## Ordering Information:



Receptacle Assembly



Receptacle



Receptacle Housing Only



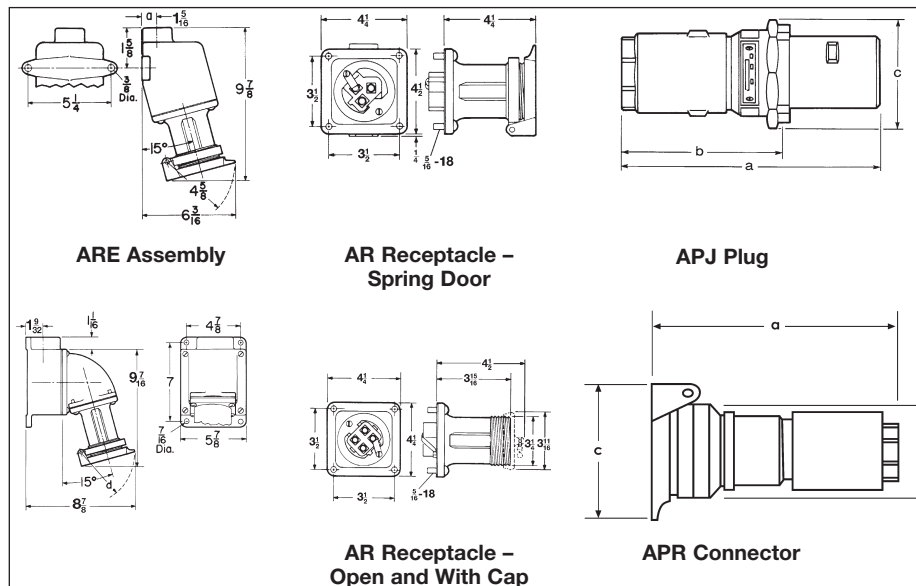
Mating Plug



Mating Connector

Description	With AJ Back Boxes and Angle Adapters			With ARE Back Boxes		Receptacle Housing Only		Cable Dia.	Cat. #	Cat. #
	Hub Size (In.)	Spring Door Cat. #	Threaded Cap Only Cat. #	Spring Door Cat. #	Spring Door Cat. #	Threaded Cap Only Cat. #				
<b>Style 1</b>										
2-wire, 2-pole }	1	AREA6213		ARE6213	AR621	AR627	0.50 to 1.15	APJ6275	APR6255	
	1¼	AREA6214		ARE6214						
3-wire, 3-pole }	1	AREA6313		ARE6313	AR631	AR637	0.50 to 1.15	APJ6375	APR6355	
	1¼	AREA6314		ARE6314						
4-wire, 4-pole }	1¼	AREA6414		ARE6414	AR641	AR647	0.50 to 1.15	APJ6475	APR6455	
	1½	AREA6415		ARE6415						
5-wire, 5-pole }	1¼		AREA6574			AR657	0.50 to 1.15	APJ6575		
	1½		AREA6575							
<b>Style 2</b>										
2-wire, 3-pole }	1	AREA6323		ARE6323	AR632	AR638	0.50 to 1.15	APJ6385	APR6365	
	1¼	AREA6324		ARE6324						
3-wire, 4-pole }	1¼	AREA6424		ARE6424	AR642	AR648	0.50 to 1.15	APJ6485	APR6465	
	1½	AREA6425		ARE6425						
4-wire, 5-pole }	1¼		AREA6584			AR658	0.75 to 1.15	APJ6585	APR6565	
	1½		AREA6585							

## Dimensions (In Inches):



Config.	Plug			Connector		
	a	b	c	a	b	c
2P or 3P	8½	5¾	3 3/8	6½	3 3/8	2 15/16
4P	8½	5 13/16	3¾	8¼	3 3/8	2 15/16
5P	9	6 3/16	4 7/16	8¼	3 3/8	3¼

†For use on systems less than 60 hertz the receptacles, plugs and connectors are for disconnect use only.