

AR back boxes and accessories for 20A, 30A and 60A receptacle housings

Ordering information:

ARE



Hub size	Cat. # 20A / 30A	Cat. # 60A
1/2"	ARE13	
3/4"	ARE23	
1"	ARE33	ARE36
1 1/4"		ARE46
1 1/2"		ARE56

ARRC



Hub size	Cat. # 20A / 30A	Cat. # 60A
1/2"	ARRC13	
3/4"	ARRC23	
1"	ARRC33	ARRC36
1 1/4"		ARRC46
1 1/2"		ARRC56

AR 15° angle adapter



For ARRH and ARRC back boxes

For steel panel or cabinet

Mounts on	Takes AR receptacle housings	Cat. #
ARRH and ARRC back boxes	20A and 30A	AR30
ARRH and ARRC back boxes	60A	AR60
Steel panel or cabinet	60A, 100A and 150A	AR610

ARRH



Hub size	Cat. # 20A / 30A	Cat. # 60A
1/2"	ARRH13	
3/4"	ARRH23	
1"	ARRH33	ARRH36
1 1/4"		ARRH46
1 1/2"		ARRH56

ARD



Hub size	Cat. # 20A / 30A	Cat. # 60A
1/2"	ARD13	
3/4"	ARD23	
1"	ARD33	ARD36
1 1/4"		ARD46
1 1/2"		ARD56

Spring door assembly



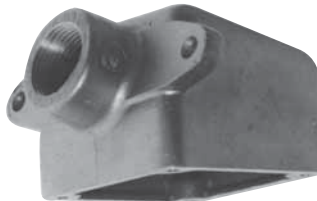
Used with	Cat. #
30A; 2-, 3-, 4-pole	QE50
60A; 2-, 3-pole	QE51
60A; 4-pole	QE52
100A and 150A; 2-, 3-pole	QE53
100A and 150A; 4-pole	QE54

ARJ



Hub size	Cat. # 20A / 30A	Cat. # 60A
1/2"	ARJ13	
3/4"	ARJ23	
1"	ARJ33	ARJ36
1 1/4"		ARJ46
1 1/2"		ARJ56

ARJG



Hub size	Cat. # 20A / 30A	Cat. # 60A
1/2"	ARJG13	
3/4"	ARJG23	
1"	ARJG33	ARJG36
1 1/4"		ARJG46
1 1/2"		ARJG56

Cap and chain



Used with	Cat. #
30A; 2-, 3-, 4-pole	QE13
60A; 2-, 3-pole	QE32
60A; 4-pole	QE34
100A and 150A; 2-, 3-pole	QE62
100A and 150A; 4-pole	QE64

AJ and AJC back boxes with angle adapters for 60A, 100A, 200A and 400A receptacle housings; AJX assemblies for 200A and 400A receptacle housings



AJ back box with 60A/100A/150A angle adapter

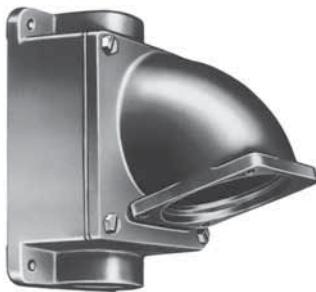


AJ back box with 200A/400A angle adapter

AJX assemblies (Back box with angle adapter, 3 blank plates and 1 hub plate)



Hub size	Cat. # 400A
2"	AJX69
2 1/2"	AJX79
3"	AJX89
3 1/2"	AJX929
4"	AJX9210
5"	AJX9212



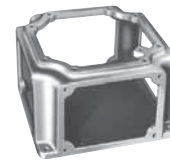
AJC back box with 60A/100A/150A AJA angle adapter



AJC back box with 200A angle adapter

AJX component parts

For use in making assemblies with arrangements of hub plates (4 required) other than those listed.



Back box



Angle adapter

Ordering information:

AJ and AJC back boxes

Hub size	Type	60A, 100A, 150A		200A		400A	
		Cat. # Box only	Cat. # Box and adapter assembly	Cat. # Box only	Cat. # Box and adapter assembly	Cat. # Box only	Cat. # Box and adapter assembly
1"	One hub	AJ46 ^B	AJ37				
	Through feed	AJC56 ^B	AJC37				
1 1/4"	One hub	AJ46	AJ47				
	Through feed	AJC56 ^B	AJC47				
1 1/2"	One hub	AJ56	AJ57	AJ71 ^B	AJ58		
	Through feed	AJC56 ^B	AJC57				
2"	One hub	AJ66	AJ67	AJ71 ^B	AJ68	AJ82 ^B	AJ69 ^C
	Through feed	AJC66	AJC67				
2 1/2"	One hub			AJ71 ^B	AJ78	AJ82 ^B	AJ79 ^C
	Through feed			AJC71	AJC78		
3"	One hub					AJ82 ^B	AJ89 ^C
	Through feed						
Angle adapter		AJA6		AJA1		AJA2	

Type	Cat. #
Back box 400A	AJX99
Angle adapter 400A	AJ245



Hub plate



Blank plate

Hub size	Cat. # Hub plate 400A	Cat. # Blank plate 400A
2"	YYP96	YYP900
2 1/2"	YYP97	
3"	YYP98	
3 1/2"	YYP99	
4"	YYP910	
5"	YYP9012	

Description	Cat. #
Hub plate replacement gasket (for all hub plates shown above)	GASK1041

^A AJ and AJC back boxes are square, making it possible to install with hub in several positions.

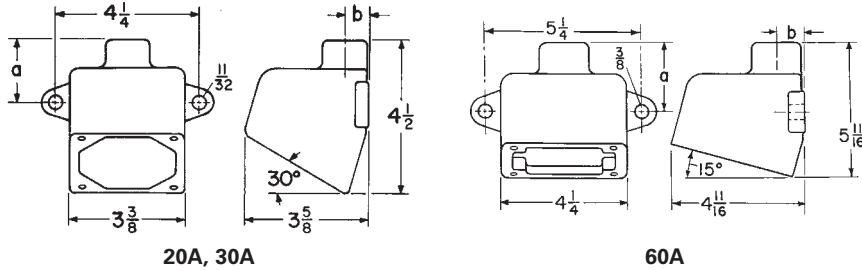
^B Reducer supplied with assembly.

^C Use AJ69, AJ79 or AJ89 for cables up to 2 - #350MCM, 3 - #300MCM or 4 - #250MCM. For larger cables, use AJX69, etc., listed under assemblies.

Dimensions

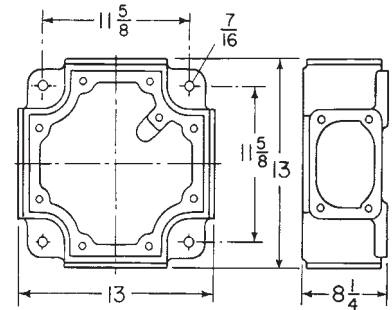
Dimensions (in inches):

ARE back boxes

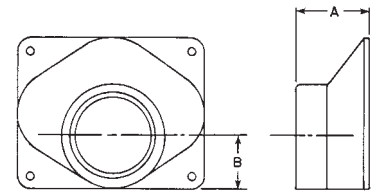


Cat. #	Amperage	Hub size	a	b
13	20A, 30A	1/2"	1 ²¹ / ₃₂	1 ¹¹ / ₁₆
23	20A, 30A	3/4"	1 ²⁷ / ₃₂	1 ¹³ / ₁₆
33	20A, 30A	1"	1 ³¹ / ₃₂	1 ¹⁵ / ₁₆
36	60A	1"	2 ⁹ / ₁₆	1 ¹⁵ / ₁₆
46	60A	1 1/4"	2 ⁵ / ₈	1 ³ / ₁₆
56	60A	1 1/2"	2 ¹ / ₁₆	1 ⁵ / ₁₆

AJX back body – 400A

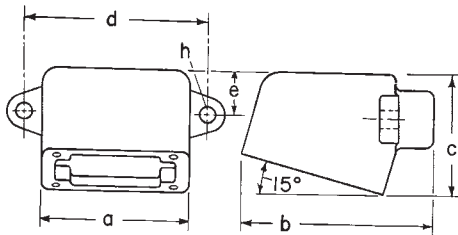


Hub plate – 400A



Cat. #	Hub size	A	B
YYP96	2"	3/4	1 ¹¹ / ₁₆
YYP97	2 1/2"	3/8	2 ⁵ / ₁₆
YYP98	3"	3/8	2 ⁷ / ₁₆
YYP99	3 1/2"	3/8	2 ⁹ / ₁₆
YYP910	4"	3/8	2 ¹³ / ₁₆
YYP9012	5"	4 ⁵ / ₈	3 ¹ / ₁₆

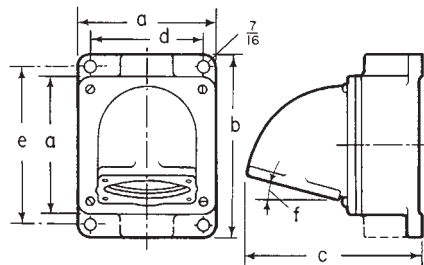
ARJG back boxes



Cat. #	Amperage	Hub size	a	b	c	d	e	h (dia.)
13	20A, 30A	1/2"	3 ⁷ / ₈	4 ¹⁵ / ₃₂	2 ³ / ₄	4 ¹ / ₄	1 ³ / ₈	1 ¹¹ / ₃₂
23	20A, 30A	3/4"	3 ⁷ / ₈	4 ¹⁵ / ₃₂	2 ³ / ₄	4 ¹ / ₄	1 ³ / ₈	1 ¹¹ / ₃₂
33	20A, 30A	1"	3 ⁷ / ₈	4 ¹⁹ / ₃₂	2 ³ / ₄	4 ¹ / ₄	1 ³ / ₈	1 ¹¹ / ₃₂
36	60A	1"	4 ¹ / ₄	5 ⁵ / ₈	4 ¹ / ₁₆	5 ¹ / ₄	1 ⁵ / ₈	3 ³ / ₈
46	60A	1 1/4"	4 ¹ / ₄	5 ¹¹ / ₁₆	4 ¹¹ / ₁₆	5 ¹ / ₄	1 ⁵ / ₈	3 ³ / ₈
56	60A	1 1/2"	4 ¹ / ₄	5 ³ / ₄	4 ¹ / ₁₆	5 ¹ / ₄	1 ⁵ / ₈	3 ³ / ₈

AJ and AJC back boxes

(With 60A, 100A, 150A, 200A and 400A angle adapters)



Cat. #	Amperage	Hub size	a	b	c	d	e	f
37, 47, 57	60A, 100A	1", 1 1/4", 1 1/2"	5/8	8	7 ⁷ / ₁₆	4 ¹ / ₈	7	15°
67	60A, 100A	2"	5/8	8	8	4 ¹ / ₈	7	15°
58, 68, 78	200A	1 1/2", 2", 2 1/2"	8	10 ³ / ₄	9 ⁷ / ₈	6 ³ / ₄	9 ¹ / ₂	45°
69, 79, 89	400A	2", 2 1/2", 3"	9	11 ⁵ / ₈	11 ¹³ / ₁₆	7 ³ / ₄	10 ³ / ₈	45°

AJ angle adapter

