

VXF and GRF outlet boxes, covers and gaskets

Applications:

VXF and GRF cast outlet boxes are installed in threaded rigid conduit systems to:

- Act as junction boxes
- Act as pull outlets
- Accept round base wiring devices and covers intended for use on 4" outlet boxes (GRF boxes only)
- Act as ceiling or wall mounting for Vaporgard™ lighting fixtures (VXF boxes)
- Mount enclosed and gasketed lighting fixtures: ARB fixture hangers (GRF boxes)

Features:

VXF:

- Compact, shallow design
- Takes GRF covers
- Multiple tapped conduit openings and pipe plugs for versatility
- Four hubs and three plugs on VXF10 and VXF20
- Five hubs and four plugs on VXFT10 and VXFT20

GRF:

- Surface mounting; flush mounting can be obtained by nailing box to concrete form through mounting lug
- Drilled mounting lugs
- Four conduit bosses spaced 90° apart on sides and one boss on back
- Blank or drilled and tapped bodies (with four side bosses tapped and plugged, plus blank back boss)

Certifications and compliances:

- UL standard: 514A (boxes and covers only)
- CSA standard: C22.2

Standard materials:

- VXF – copper-free aluminum
- GRF – Feraloy iron alloy or copper-free aluminum

Standard finishes:

- VXF – epoxy enamel
- GRF – electrogalvanized and aluminum acrylic paint

Options:

Description

- Hot dip galvanized **Suffix HDG**
- Available on GRF bodies and covers only*

A VXFT has hubs on four sides and back; VXF has hubs on four sides only.

B Not available with hot dip galvanized finish.

See Section 6F for complete listing of lighting fixtures and hangers.

Ordering information:

VXF tapped surface with lugs

4 hubs, 3 plugs^A



Hub size	Cat. #
1/2"	VXF10
3/4"	VXF20

Surface with lugs

5 hubs, 4 plugs^A



Hub size	Cat. #
1/2"	VXFT10
3/4"	VXFT20

GRF blank surface with lugs



Inside depth	Cat. #
1 3/8"	GRF19
1 15/16"	GRF29
3 1/8"	GRF39

GRFX tapped surface with lugs

4 hubs, 3 plugs
Blank back boss



Inside depth	Size tap	Cat. # Iron	Cat. # Aluminum
1 3/8"	1/2"	GRFX119	GRF119
1 3/8"	3/4"	GRFX219	GRF219
2 1/16"	1/2"	GRFX129	GRF129
2 1/16"	3/4"	GRFX229	GRF229
2 1/16"	1"	GRFX329	GRF329
3 1/8"	1/2"	GRFX139	GRF139
3 1/8"	3/4"	GRFX239	GRF239
3 1/8"	1"	GRFX339	GRF339

GRF blank cover



Description	Cat. # Iron	Cat. # Aluminum
Surface	GRF10 ^B	GRF110

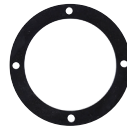
GRF hub covers



Fixture weight to 125 lbs.

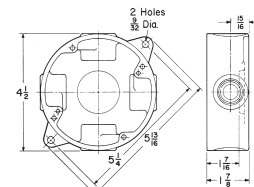
Description	Size	Cat. # Iron	Cat. # Aluminum
Surface	1/2"	GRF11	GRF11 SA
Surface	3/4"	GRF12	GRF12 SA

GRF gasket

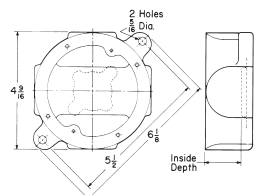


Description	Cat. #
Neoprene	GASK643

Dimensions (in inches):



VXF-VXFT^B



GRF-GRFX

Stainless steel fittings

VXF junction boxes

Applications:

For use where high quality, durable products that withstand corrosion, chemical treatments and wash downs are required, including:

- Wastewater treatment plants
- Food and beverage facilities
- Pharmaceutical plants
- Pulp and paper mills
- Mines

VXF stainless steel junction boxes are installed in threaded rigid conduit systems to:

- Act as junction boxes for making terminations
- Act as pull outlets

Features:

VXF junction box

Includes:

- Four tapped conduit openings with three 316 stainless steel installed recessed hex plugs
- Four 1/4-20 x 1" stainless steel hex head bolts for mounting box to surface
- One 10-32 x 1/4" installed green ground screw with slotted head

VXF hub cover

Includes:

- Fixture rated up to 130 lbs. with VXF body
- Neoprene gasket
- Four 1/4-20 x 5/8" stainless steel hex head bolts and lock washer for cover attachment to box
- One 10-24 x 5/8" Phillips pan head set screw

VXF blank cover

Includes:

- Neoprene gasket
- Four 1/4-20 x 5/8" stainless steel hex head bolts for cover attachment to box
- GRF10SS comes with PVC protective peel off coating

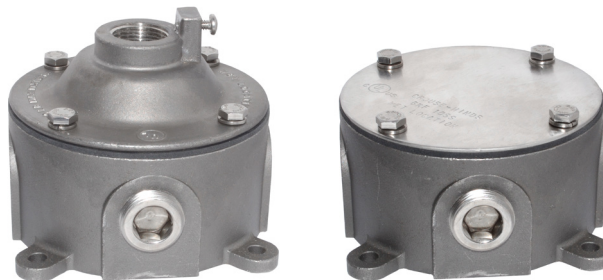
GRF replacement gasket

Includes:

- Neoprene gasket

Certifications and compliances:

- UL/cUL Listed, File No. E-15022
- NEC/CEC
 - Class I, Division 2
 - Class II, Divisions 1 & 2
 - Class III
- Fixture rated (with pendant cover)
- UL514A
- Wet locations
- NEMA 4X
- Assembled in the USA



Standard materials:

- Body, plugs and cover – 316 stainless steel
- Nuts and washers – stainless steel
- Gasket – neoprene

Standard finishes:

- Body, plugs, nuts and washer – natural
- GRF10SS – natural with #4 brushed finish

VXF JUNCTION BOXES



Cat. #	Description
VXF20SS	3/4" X style junction box
VXF30SS	1" X style junction box

VXF HUB COVER



Cat. #	Description
VXF12SS	3/4" pendant cover with gasket

VXF BLANK COVER



Cat. #	Description
GRF10SS	Flat cover with gasket

GRF REPLACEMENT GASKET



Cat. #	Description
GASK643	Neoprene gasket