



ESX1 LED Area Luminaire

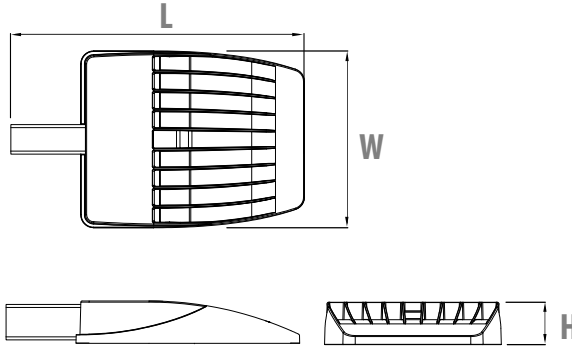


Catalog Number
Notes
Type

Hit the Tab key or mouse over the page to see all interactive elements.

Specifications

EPA	0.40 ft ² (0.04 m ²)
Length:	19.9" (50.5 cm)
Width:	12" (30.5 cm)
Height:	2.9" (7.4 cm)
Weight:	11.2 lbs (5.1 kg)



Introduction

The ESX LED area luminaire provides the combination of best product, best price and best delivery. ESX is ideal for one-for-one replacement of HID area lighting and provides up to 76% energy savings, long service life and fast payback.

The ESX1 delivers 8,000 to 25,000 lumens allowing it to replace 150W to 400W HID luminaires. All ESX luminaires feature adjustable light output, providing two light levels from one product, allowing greater flexibility in the field and on distributors' shelves.

All luminaires feature a reversible arm that allows for mounting on both round and square poles. Eight configurations of ESX1 luminaires are stocked in Acuity Brands distribution centers.

Ordering Information

HID Equivalent	Luminaire / Performance Package	High		Low		Distribution	Voltage	Catalog Number	CI Code	UPC
		Lumens	Watts	Lumens	Watts					
4000K										
150W to 250W	ESX1 LED P2	14,000	98W	8,000	50W	Type 3	120-277V	ESX1 LED P2 40K R3 MVOLT UPA BLS DDBXD M2	*269PG3	00194994838302
400W	ESX1 LED P4	25,000	190W	21,000	146W	Type 3	120-277V	ESX1 LED P4 40K R3 MVOLT UPA BLS DDBXD M2	*269PG8	00194994838340
							347-480V	ESX1 LED P4 40K R3 HVOLT UPA BLS DDBXD M2	*269PGC	00194994838364
						Type 5	120-277V	ESX1 LED P4 40K R5 MVOLT UPA BLS DDBXD M2	*269PGG	00194994838418
							347-480V	ESX1 LED P4 40K R5 HVOLT UPA BLS DDBXD M2	*269PGN	00194994838463
5000K										
150W to 250W	ESX1 LED P2	14,000	98W	8,000	50W	Type 3	120-277V	ESX1 LED P2 50K R3 MVOLT UPA BLS DDBXD M2	*269PGY	00194994838555
400W	ESX1 LED P4	25,000	190W	21,000	146W	Type 3	120-277V	ESX1 LED P4 50K R3 MVOLT UPA BLS DDBXD M2	*269PH1	00194994838531
						Type 5	120-277V	ESX1 LED P4 50K R5 MVOLT UPA BLS DDBXD M2	*269PH2	00194994838548

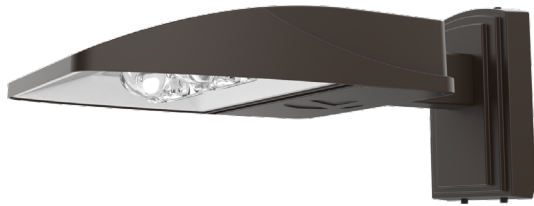
Note: Luminaire ships set on high (switchable to low). All luminaires feature adjustable light output, a reversible arm for mounting on round and square poles and dark bronze finish. The lumen output and input watts shown are nominal values. Refer to the lumens table on page 3 for specific values.

Accessories: Order as separate catalog number.

Catalog Number	Description	CI Code	UPC
ESXWBA DDBXD U	ESX WBA wall bracket, dark bronze finish	*27055T	00194995092826

Note: Accessories are ordered and shipped separately from the luminaire.



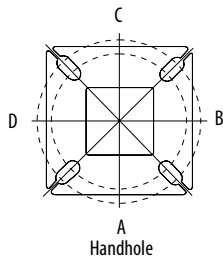


Wall Bracket (WBA)

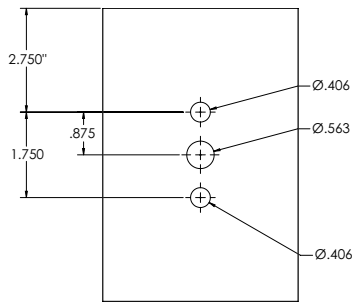
Pole/Mounting Information

Accessories including bullhorns, cross arms and other adapters are available under the accessories tab at Lithonia's Outdoor Poles and Arms product page. Click here to visit [Accessories](#).

HANDHOLE ORIENTATION



DRILLING TEMPLATE #20



Round Tenon Mount - Pole Top Slipfitters

Tenon O.D.	ESX1 Mounting	Single	2 at 180°	2 at 90°	3 at 120°	3 at 90°	4 at 90°
2 - 3/8"	UPA (round)	ASR4-5 190	ASR4-5 280	ASR4-5 290	ASR4-5 320	ASR4-5 390	ASR4-5 490

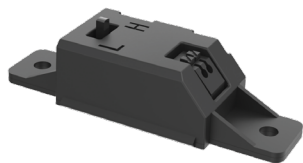
Drill/Side Location by Configuration Type

Drilling Template	Mounting Option	Single	2 @ 180	2 @ 90	3 @ 120	3 @ 90	4 @ 90
	Head Location	Side B	Side B & D	Side B & C	Round Pole Only	Side B, C & D	Side A, B, C & D
#20	Drill Nomenclature	DM19ESX	DM28ESX	DM29ESX	DM32ESX	DM39ESX	DM49ESX

Luminaire EPA

*Includes luminaire and integral mounting arm. Other tenons, arms, brackets or other accessories are not included in this EPA data.

Fixture Quantity & Mounting Configuration	Single	2 @ 90	2 @ 180	3 @ 90	3 @ 120	4 @ 90	2 Side by Side	3 Side by Side	4 Side by Side
Mounting Type									
UPA - Reversible Arm Mount	0.40	0.79	0.79	1.19	1.19	1.58	0.79	1.19	1.58



Adjustable Light Output (ALO) technology:

Internal bi-level switch with two light levels for greater flexibility within one product (default set to high)

	High Lumens	Low Lumens	HID Replacement
ESX1 LED P2	14,000	8,000	150W to 250W
ESX1 LED P4	25,000	21,000	400W

UPA - Reversible Arm Mount

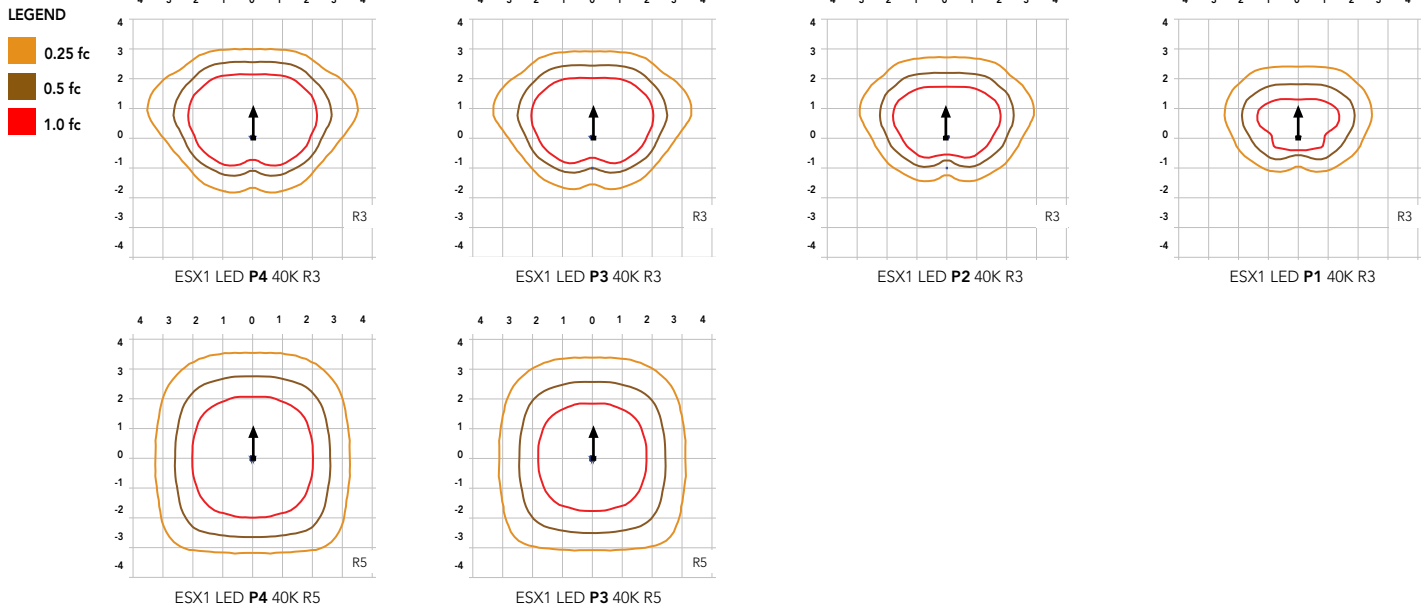
The UPA reversible arm is designed to mount onto round and square poles. During installation, the flat end of the arm is placed against the flat surface on square poles. When using with round poles, the arm can be turned around so that the curved end is placed against the curvature on round poles. ESX1 can be mounted onto minimum 3.5" square and round poles.



Photometric Diagrams

To see complete photometric reports or download .ies files for this product, visit Lithonia Lighting's [ESX Area homepage](#).

Isofootcandle plots for the ESX1. Distances are in units of mounting height (25').



Performance Data

Lumen Output

Lumen values are from photometric tests performed in accordance with IESNA LM-79-08. Data is considered to be representative of configurations shown within the tolerances described within LM-79. Contact factory for performance data on any configurations not shown here.

Series	Performance Package	System Watts	Distribution Type	40K (4000K, 70 CRI)					50K (5000K, 70 CRI)				
				Lumens	B	U	G	LPW	Lumens	B	U	G	LPW
ESX1 LED P2	P1 (switched to low)	50W	R3	7,874	2	0	2	157	7,993	2	0	2	160
	P2	98W	R3	13,917	2	0	2	142	14,128	2	0	2	144
ESX1 LED P4	P3 (switched to low)	146W	R3	20,658	3	0	3	141	20,881	3	0	3	143
			R5	21,680	5	0	3	148	21,914	5	0	3	150
	P4	190W	R3	25,034	3	0	3	132	25,304	3	0	3	133
			R5	26,273	5	0	3	138	26,557	5	0	3	140

Electrical Load

Performance Package	System Watts (W)	Current (A)					
		120V	208V	240V	277V	347V	480V
P1 (low)	50W	0.41	0.24	0.21	0.18	---	---
P2	98W	0.81	0.47	0.41	0.35	---	---
P3 (low)	146W	1.22	0.70	0.61	0.53	0.42	0.30
P4	190W	1.58	0.91	0.79	0.69	0.55	0.40

Lumen Ambient Temperature (LAT) Multipliers

Use these factors to determine relative lumen output for average ambient temperatures from 0-40°C (32-104°F).

Ambient Temperature		Lumen Multiplier
0°C	32°F	1.03
5°C	41°F	1.03
10°C	50°F	1.02
15°C	59°F	1.01
20°C	68°F	1.01
25°C	77°F	1.00
30°C	86°F	0.99
35°C	95°F	0.99
40°C	104°F	0.98

Projected LED Lumen Maintenance

Data references the extrapolated performance projections for the platforms noted in a 25°C ambient and hours of LED testing (tested per IESNA LM-80-08 and reported per IESNA M-21-11).

To calculate LLF, use the lumen maintenance factor that corresponds to the luminaire performance package below. For other lumen maintenance values, contact factory.

Performance Package	TM-21 Percent Lumen Maintenance at 60,000 hrs
P1 / P2	89%
P3	88%
P4	87%