

Rigmaster™ LED Series Luminaires

Enclosed and Gasketed Fixtures

NEC/CEC:

Class I, Division 2, Groups A, B, C, D
 Class II, Division 1, Groups E, F, G
 Class II, Division 2, Groups F, G
 Class III
 Class I, Zone 2, Group IIC
 Class II, Zone 20 & 21, Group IIIC

NEC/CEC:

Type 3R, 4, 4X, IP66
 Simultaneous Exposure
 Suitable for Use in Wet Locations
 Marine Outside Type (Salt Water) ①
 American Bureau of Shipping (ABS) Certified

Applications

- For use in locations where:
 - Flammable gases and dusts may be present
 - A high degree of corrosion resistance is required
 - Protection against dirt, water and moisture is necessary
- Typical industries include:
 - Drilling rigs
 - Oil refineries
 - Petrochemical facilities
 - Waste and sewer treatment
 - Underground tunnels
 - Analyzer houses
 - Cooling towers
 - Grain elevators
 - Coal and metal manufacturing
 - Flour and feed mills

Features

- Lightweight design makes mounting and installation easy.
- Low fixture profile allows installation in compact spaces.
- Two sizes and output options deliver up to 7600 lumens.

Model Number	Nominal Lumens ②	Fluorescent Equivalent		
		Lamp Wattage	Lamp Quantity	Lamp Type
RM*2	4300	32W	2	T8
RM*4	7600	32W	3	T8

② Nominal lumen value for 5000K, clear Lens. Detailed lumen information is provided in data tables.

- Precision engineered clear polycarbonate lens offers wide light distribution for greater area coverage.
- Choice of color temperature (CCT): 5000K cool white, 4000K neutral white or 3000K warm white with minimum 80 CRI.
- Field replaceable lens, LED driver, battery pack and battery management module (BMM)
- Three unique mounting bracket options allow for mounting in any location and retrofitting third party fixtures.
- For ease of retrofitting, mounting brackets accommodate most bolt patterns for Crouse-Hinds™ †, Dialight™ ‡ and other manufacturers. See compatibility chart on page 11.
- Emergency version is suitable for heights up to 14 feet.
- Wirenuts and screw terminal block ③ option for added flexibility.
- Hinged wire compartment cover is secured with captive screws for safety and convenience.
- Loop in/out wiring capability for inter connecting fixtures
- Standard screw-type terminal block can accept UL/CSA 22-12 AWG wire.
- 5 casted points for secondary safety retention.
- Standard 6 kV surge protection.
- Fixture position locking mechanism provides ease and consistency of aiming.
- Rugged housing with superior thermal design translates to long luminaire life.
- Ambient Temperature: -40°C to +65°C (-40°F to +149°F).

† Crouse-Hinds is a registered trademark of Eaton Corporation.

‡ Dialight is a registered trademark of Dialight.

① Applicable to standard (non emergency) fixtures only.

③ Terminal block option available for BU voltage configuration only.



- Ambient Temperature for Emergency Version: -20°C to +55°C (-4°F to +131°F).
- LED L70 of 60,000 hours reported at +65°C (+149°F).
- Photometric data and electronic drawings available upon request.

Options

- Brackets can be factory installed or purchased separately.
- Safety cable can be purchased separately or configured as an add on option to be shipped with the LED fixture.
- Standard 3/4" NPT threads with 1/2" option.
- Clear or Diffused Polycarbonate Lens.
- Emergency battery back up option for 90 or 180 minutes.
- Wirenuts or screw terminal blocks ③ available.

Standard Materials

- Housing: copperfree (4/10 of 1% max.) aluminum
- Lens: thermal shock- and impact-resistant polycarbonate lens
- Gasket: silicone rubber, mechanically secured
- Bolts: stainless steel
- Close up plugs: (3) aluminum provided
- Mounting brackets: Zinc plated steel

Standard Finishes

- Housing: gray epoxy powder coat finish, electrostatically applied for complete uniform protection

NEC/CEC Certifications and Compliances

- UL Standard: UL 924; UL 844; UL 1598; UL1598A; UL 50E; UL 8750
- CSA Standard: C22.2 No. 0 - 10; C22.2 No. 94.2 - 15; C22.2 No. 137-18; C22.2 No 141-15; C22.2 No. 250.0 - 18; C22.2 No. 250.13 -17; C22.2 No. 60529-16
- NEMA ANSI/IEC Standards: 60529
- Rigmaster Standard:
 - cCSAus: 164460, Certificate Number: 70212106
- Rigmaster Emergency:
 - cCSAus: 164460, Certificate Number: 70218504

DesignLights™ Consortium

- Check DLC QPL for current list of products.

Related Products

- Industrial Rigmaster LED Luminaries

Rigmaster™ LED Series Luminaires

Enclosed and Gasketed Fixtures

NEC/CEC:

Class I, Division 2, Groups A, B, C, D
Class II, Division 1, Groups E, F, G
Class II, Division 2, Groups F, G
Class III
Class I, Zone 2, Group IIC
Class II, Zone 20 & 21, Group IIIC

NEC/CEC:

Type 3R, 4, 4X, IP66
Simultaneous Exposure
Suitable for Use in Wet Locations
Marine Outside Type (Salt Water) ①
American Bureau of Shipping (ABS) Certified

Illustrated Features

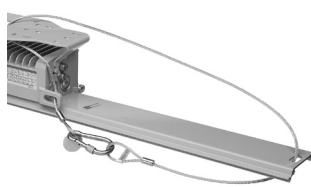
LED Flexibility and Modular Design



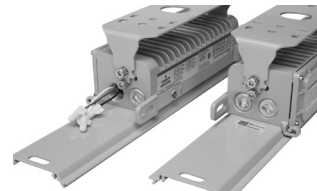
Hinged wirebox cover with captive screws allow hassle free installation in challenging conditions and prevents accidental disengagement to enhance workplace safety



Notched position locking mechanism enables fixture to be aimed consistently



Five points for secondary retention provide protection against in-field vibration.

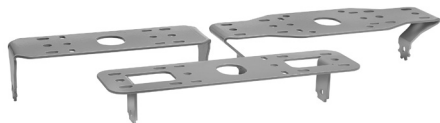


Rigmaster offers two NPT hubs on each end for through wiring. The leads are placed outside the wiring compartment to facilitate plug n play installation so customers can save time and bypass unscrewing the cover

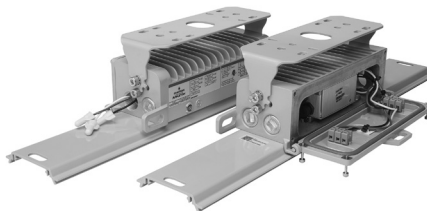
Choose from **three color temperatures (CCT):** 3000K, 4000K, and 5000K

Standard linear light distribution pattern: wide distribution maximizes spread and work plane brightness to optimize number of luminaires needed

Configurable Options



Mounting Brackets ③④: Choose to mount your Rigmaster using one of three distinctly designed brackets to best suit your installation needs. All brackets can be factory installed to save time in the field or purchased separately.



Wirenuts or Screw Terminal Blocks: Choose between wirenuts and screw terminal blocks ②③ for ease of field installation. Terminal blocks support UL/CSA 22 to 12 AWG wire.



Clear or Diffused Polycarbonate Lens: Select a clear or diffused polycarbonate lens for the optimal level of work plane brightness and visual comfort. These lenses are field interchangeable for convenience and flexibility

Safety Features



Safety cables can be purchased separately or included with fixture to reduce ordering and receiving complexity

① Applicable to standard (non emergency) fixtures only.

② Terminal block option available for BU voltage configuration only.

③ Brackets and safety cables can be ordered separately or included with fixture. See Ordering Table for more information.

④ Mounting Brackets compatible with standard and emergency versions are not the same. please refer to mounting bracket details on page 9 and 10 for details.

Rigmaster™ LED Series Luminaires

Enclosed and Gasketed Fixtures

NEC/CEC:

Class I, Division 2, Groups A, B, C, D
 Class II, Division 1, Groups E, F, G
 Class II, Division 2, Groups F, G
 Class III
 Class I, Zone 2, Group IIC
 Class II, Zone 20 & 21, Group IIIC

NEC/CEC:

Type 3R, 4, 4X, IP66
 Simultaneous Exposure
 Suitable for Use in Wet Locations
 Marine Outside Type (Salt Water) ①
 American Bureau of Shipping (ABS) Certified

Order using catalog numbering guides below.

<p>RM</p> <p>Series: RM - Rigmaster Linear LED</p>	<p>A</p> <p>Mounting ④⑤: N - If None (Use if Ordering Appleton Bracket Separately) A - Small Swivel Bracket B - Large Swivel Bracket L - Low Profile Bracket</p>	<p>2</p> <p>Lumen (nominal) ②: 2 - 4,300 Lumens (2') 4 - 7,600 Lumens (4')</p>	<p>2</p> <p>Hub Size: 1 - (4) 1/2" NPT 2 - (4) 3/4" NPT</p>	<p>C</p> <p>Color Temperature: C - Cool 5000K N - Neutral 4000K W - Warm 3000K</p>	<p>D</p> <p>Lens Material: D - Diffused Polycarbonate P - Clear Polycarbonate</p>	<p>L</p> <p>Light Distribution Pattern: L - Linear Pattern</p>	<p>BU</p> <p>Voltage ⑥: BU - 120-277 Vac; 125-300 Vdc BH - 347-480 Vac</p>	<p>N</p> <p>Emergency: N - If None (Standard) H - 90 Minutes E - 180 Minutes</p>	<p>G</p> <p>Color: G - Appleton Gray (Standard)</p>	<p>W</p> <p>Wiring Method: W - Wire Nuts (Standard) T - Fixed Terminal Block③</p>	<p>2</p> <p>Option ④: Blank - If None 1 - (1) Safety Cable 2 - (2) Safety Cables</p>
---	---	---	--	---	--	---	---	---	--	--	---

① Applicable to standard (non emergency) fixtures only.
 ② For lumen output information, see Lumen Values Table.
 ③ Terminal block option available for BU voltage configuration only.
 ④ Brackets and safety cables can be ordered separately or included with fixture. See Ordering Table for more information.
 ⑤ Mounting option A is not available with emergency version.
 ⑥ Emergency battery back up version is only available with BU voltage configuration for 120-277V operation.