

FEATURES & SPECIFICATIONS

INTENDED USE — Our recessed LED module is the most economical means to create a well lit environment with exceptional energy efficiency and near zero maintenance. Great for retrofit into existing downlight cans or new construction and remodel applications. Adjustable torsion spring and retention allows fitment into many 5" and 6" cans. The LED module maintains at least 70% light output for 50,000 hours. Indoor and Outdoor Use.

CONSTRUCTION — Aluminum spun reflector with deep regression for reduced glare. Combined LED and driver printed circuit board attached. Inner reflector cone funnels light through the pressed-in diffused lens.

OPTICS — Diffused lens at end of mixing chamber to provide even light distribution for general illumination, equivalent to 100W PAR30 lamp.

Wide flood beam angle at >120°.

ELECTRICAL — Center 2 Edge™ (patent pending) technology created for a single point source. Primary power disconnect provided for simple connection to a dedicated LED connector in the housing.

Dimming down to 10%. For compatible dimmers, refer to Compatible Dimmers Chart.

1200-lumen E series has an input wattage of 13.8 watts, 87 lumens per watt, equivalent to 100-watt incandescent.

E Series' patent pending driver has zero inrush, which allows power loads to be calculated with actual rated wattages.

Example: 43 units of 65BEMW HL LED fixtures can be installed in line with a 600-watt dimmer. 600W/13.8W = 43 fixtures. 1200L/13.8W=86 fixtures.

INSTALLATION — Suitable for installation in standard and shallow-height rough-in sections.

E26 socket adaptor ships standard.

Twin torsion springs ensure easy installation for 5" and 6" recessed housings.

LISTINGS — CSA certified to US and Canadian safety standards. ENERGY STAR® certified. Can be used to comply with California Title 24 Part 6 High Efficacy LED Light Source Requirements. Wet location listed. WSEC ASTM E283 for Air-Tight (with IC housings).

WARRANTY — 5-year limited warranty. Complete warranty terms located at:

www.acuitybrands.com/support/warranty/terms-and-conditions

NOTE: Actual performance may differ as a result of end-user environment and application.

All values are design or typical values, measured under laboratory conditions at 25 °C.

Specifications subject to change without notice.

PATENTS PENDING.

Catalog Number
Notes
Type

LED Recessed Downlighting

65BE & 65SE High Lumen



65BEMW

65SEMW

5" / 6" LED Module

IC/Non-IC

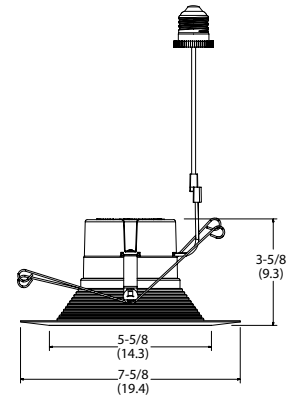
Retrofit



E26 adaptor

Specifications

Aperture: 5-5/8 (14.3)
 Ceiling opening: Determined by rough-in
 Overlap trim: 7-5/8 (19.4)
 Height: 2-3/4 (7.1)
 All dimensions are inches (centimeters) unless otherwise indicated.



ORDERING INFORMATION For shortest lead times, configure product using **bolded** options.

Example: 65BEMW HL LED 30K 90CRI L7XLED T24

Series/Finish	Lamp	CCT / W / Lumens ¹	CRI	Voltage
65BEMW 5" / 6" Baffle LED module, matte white	HL LED	30K 3000K/13.8W/1200L	90CRI 90CRI	(blank) 120V
65SEMW 5" / 6" Smooth LED module, matte white		30K 3000K/13.8W/1200L		

Housing options					
L7XLED T24	6" new construction rough-in LED base	LC6	6" new construction rough-in ²	IC21	6" IC shallow new construction housing ²
L7XRLED T24	6" remodel rough-in LED base	LCP	6" new construction shallow rough-in ²	IC21R	6" IC shallow remodel housing ²
LC6LED T24	6" new construction rough-in LED base	LSLED T24	5" new construction rough-in LED base	IC22	6" IC new construction housing ²
L7X	6" new construction rough-in ²	L5RLED T24	5" remodel rough-in LED base	IC22R	6" IC remodel housing ²
L7XR	6" remodel rough-in ²	L5	5" new construction rough-in ²	IC23	6" IC new construction housing, no plate ²
L7XP	6" new construction shallow rough-in ²	L5R	5" new construction rough-in ²	IC23R	6" IC remodel housing, no plate ²
L7XPR	6" remodel shallow rough-in ²				

Accessories: Order as separate catalog number.			
TSA6	6" torsion spring adaptor	RK1 CG52178 E26 ADAPTER/MALE PLUG BAL DISC ASM	E26 Adapter

Notes

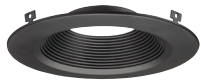
- Total system delivered lumens.
- Must be ordered on a separate line.

TRIM INSERTS

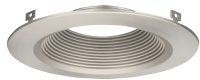
TRIM INSERTS (for field configuration; ordered separately)

Example: 65SEBN R4

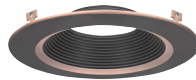
Series/Finish				Packaging	
65BEMB	6" Baffle, Matte Black	65SEMB	6" Smooth, Matte Black	R4	Retail Pack of 4 units
65BEBN	6" Baffle, Brush Nickel	65SEBN	6" Smooth, Brush Nickel		
65BEORB	6" Baffle, Oil-Rubbed Bronze	65SEORB	6" Smooth, Oil-Rubbed Bronze		



6" Baffle, Matte Black (65BEMB)



6" Baffle, Brush Nickel (65BEBN)



6" Baffle, Oil-Rubbed Bronze (65BEORB)



6" Smooth, Matte Black (65SEMB)



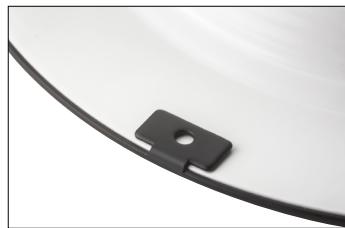
6" Smooth, Brush Nickel (65SEBN)



6" Smooth, Oil-Rubbed Bronze (65SEORB)



Pre-Install color finish trim insert over white 6" E Series Module.



Press down color finish tabs for post-installation to create final LED 6" module.

Energy Data

ADDITIONAL DATA 65BEMW/65SEMW HL LED 30K

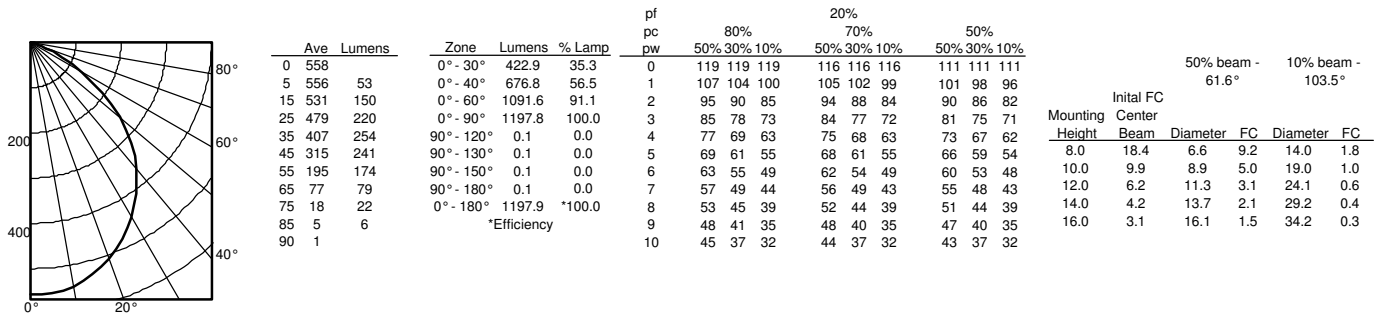
ENERGY DATA*	
CRI - 90	
Lumens	1198
Min. starting temp	-20°F (-29°C)
Max. temp	104°F (40°C)
EMI/RFI	FCC Title 47 CFR, Part 15, Class B
Sound rating	A standards
Input voltage	120V
Min. power factor	0.99
Input frequency	50/60Hz
Rated wattage	13.8W
Input power	13.8W
Input current	0.11A

*Values at non-dimming line voltage.

PHOTOMETRICS

Distribution Curve Distribution Data Output Data Coefficient of Utilization Illuminance Data at 30" Above Floor for a Single Luminaire

65BEMW HL LED, 30K, input watts: 13.8, delivered lumens: 1198, LM/W = 86.8, test no. ISF 19732P2, tested in accordance with IESNA LM 79-08



65SEMW HL LED, 30K, input watts: 13.8, delivered lumens: 1198, LM/W = 86.8, test no. ISF 19732P2, tested in accordance with IESNA LM 79-08

