

Pilot and Signaling Devices

Heavy-Duty 22.5 mm Watertight/Oiltight Selector Switches

C-2000

Section 9

3-Position Key Operated Selector Switches

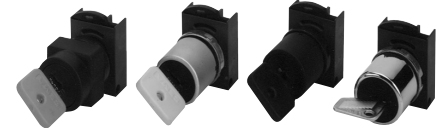
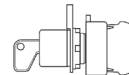
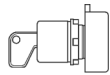
Non-Illuminated

600 VAC Max., 300 VDC Max.

10 Amps Continuous AC, 2.5 Amps Continuous DC

Selection Process

Select operator below + Select contact block(s) from page 9-93 + Select nameplate, if required, from pages 9-95 to 9-97 = Complete Unit



Key Operated 3-Position

3-Position Key Selector Switches

Position Type	Release Type	Cam Code	Key Removal	Product Number
3-Position	Maintained	Z	Left	P9#SCZ0A†
3-Position	Maintained	Z	Center	P9#SCZ0C†
3-Position	Maintained	Z	Right	P9#SCZ0E†
3-Position	Maintained	Z	Left and Center	P9#SCZ0H†
3-Position	Maintained	Z	Left and Right	P9#SCZ0K†
3-Position	Maintained	Z	Center and Right	P9#SCZ0N†
3-Position	Maintained	Z	Left, Center and Right	P9#SCZ0T†
3-Position	Maintained	E	Left	P9#SCE0A†
3-Position	Maintained	E	Center	P9#SCE0C†
3-Position	Maintained	E	Right	P9#SCE0E†
3-Position	Maintained	E	Left and Center	P9#SCE0H†
3-Position	Maintained	E	Left and Right	P9#SCE0K†
3-Position	Maintained	E	Center and Right	P9#SCE0N†
3-Position	Maintained	E	Left, Center and Right	P9#SCE0T†
3-Position	Maintained	L	Left	P9#SCL0A†
3-Position	Maintained	L	Center	P9#SCL0C†
3-Position	Maintained	L	Right	P9#SCL0E†
3-Position	Maintained	L	Left and Center	P9#SCL0H†
3-Position	Maintained	L	Left and Right	P9#SCL0K†
3-Position	Maintained	L	Center and Right	P9#SCL0N†
3-Position	Maintained	L	Left, Center and Right	P9#SCL0T†
3-Position	Maintained	U	Left	P9#SCU0A†
3-Position	Maintained	U	Center	P9#SCU0C†
3-Position	Maintained	U	Right	P9#SCU0E†
3-Position	Maintained	U	Left and Center	P9#SCU0H†
3-Position	Maintained	U	Left and Right	P9#SCU0K†
3-Position	Maintained	U	Center and Right	P9#SCU0N†
3-Position	Maintained	U	Left, Center and Right	P9#SCU0T†
3-Position	Spring Return L → C	Z	Center	P9#SCZ1C†
3-Position	Spring Return L → C	Z	Right	P9#SCZ1E†
3-Position	Spring Return L → C	Z	Center and Right	P9#SCZ1N†
3-Position	Spring Return L → C	E	Center	P9#SCE1C†
3-Position	Spring Return L → C	E	Right	P9#SCE1E†
3-Position	Spring Return L → C	E	Center and Right	P9#SCE1N†
3-Position	Spring Return L → C	L	Center	P9#SCL1C†
3-Position	Spring Return L → C	L	Right	P9#SCL1E†
3-Position	Spring Return L → C	L	Center and Right	P9#SCL1N†
3-Position	Spring Return L → C	U	Center	P9#SCU1C†
3-Position	Spring Return L → C	U	Right	P9#SCU1E†
3-Position	Spring Return L → C	U	Center and Right	P9#SCU1N†
3-Position	Spring Return C ← R	Z	Left	P9#SCZ5A†
3-Position	Spring Return C ← R	Z	Center	P9#SCZ5C†
3-Position	Spring Return C ← R	Z	Left and Center	P9#SCZ5H†
3-Position	Spring Return C ← R	E	Left	P9#SCE5A†
3-Position	Spring Return C ← R	E	Center	P9#SCE5C†
3-Position	Spring Return C ← R	E	Left and Center	P9#SCE5H†
3-Position	Spring Return C ← R	L	Left	P9#SCL5A†
3-Position	Spring Return C ← R	L	Center	P9#SCL5C†
3-Position	Spring Return C ← R	L	Left and Center	P9#SCL5H†
3-Position	Spring Return C ← R	U	Left	P9#SCU5A†
3-Position	Spring Return C ← R	U	Center	P9#SCU5C†
3-Position	Spring Return C ← R	U	Left and Center	P9#SCU5H†
3-Position	Spring Return L → C ← R	Z	Center	P9#SCZ3C†
3-Position	Spring Return L → C ← R	E	Center	P9#SCE3C†
3-Position	Spring Return L → C ← R	L	Center	P9#SCL3C†
3-Position	Spring Return L → C ← R	U	Center	P9#SCU3C†

Replace pound sign (#) in product number with style code from Styles table on page 9-80.

Replace dagger (†) in product number with key code from Keys table on page 9-80.



Pilot and Signaling Devices Heavy-Duty 22.5 mm Watertight/Oiltight Selector Switches

Section 9

C-2000

3-Position Key Operated Selector Switches

Non-Illuminated

600 VAC Max., 300 VDC Max.

10 Amps Continuous AC, 2.5 Amps Continuous DC

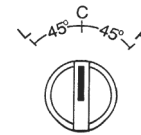
#Styles

Style	Polished Chrome	Satin Chrome	Round Engineered Plastic	Square Engineered Plastic
#Style Code	C	M	X	S

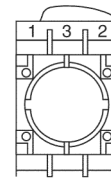
Cams

Note selection and position of contact block(s) for cam selection.

Cam Code (6th digit in product number)				Quick-Connect			
				Screw Terminal Contact Block		Terminal Contact Block	
				Position 1	Position 2	Position 1	Position 2
Z	0	0	X	P9B10VN	—	P9B10FN	—
	X	0	0	—	P910VN	—	P9B10FN
	X	X	0	P9B01VN	—	P9B01FN	—
	0	X	X	—	P9B01VN	—	P9B01FN
	0	0	X	P9B11VN	—	—	—
	X	X	0	—	—	—	—
	X	0	0	—	P9B11VN	—	—
	0	X	X	—	—	—	—
E	0	0	X	—	P9B01VN	—	P9B01FN
	0	X	0	P9B10VN	—	P9B10FN	—
	0	0	X	P9B11VN	—	—	—
	0	X	0	—	—	—	—
L	X	0	0	—	P9B10VN	—	P9B10FN
	0	X	0	P9B01VN	—	P9B01FN	—
	X	0	0	P9B11VN	—	—	—
	0	X	0	—	—	—	—
U	0	0	X	—	—	—	—
	0	X	0	P9B11VN	—	—	—
	0	0	X	—	P9B11VN	—	—
	X	0	0	—	—	—	—



Operator Positions



Contact Block Positions
(viewed from rear)

†Keys

Key Number	Std. 3095	Special ¹										Colored ¹				
		9901	9902	9903	9904	9905	9910	9916	9919	3353	R455 (Ronis)	73033 (Yellow)	73034 (Black)	73037 (Red)	73038 (Blue)	73040 (Orange)
†Key Code	95	01	02	03	04	05	10	16	19	53	55	33	34	37	38	40

¹To order with other than standard key code (95), Minimum quantity order on Key Codes 95, 55 and 33 is one; for all others minimum quantity order is ten.



Product Number Selection Instructions: See page 9-79

Pilot and Signaling Devices

Heavy-Duty 22.5 mm Watertight/Oiltight Selector Switches

Section 9

C-2000

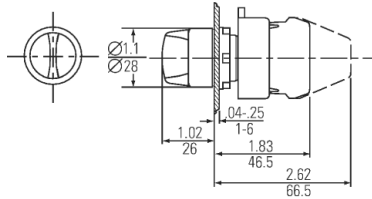
Key Operated

Non-Illuminated

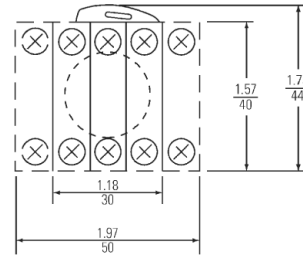
Outlines and Dimensions ($\frac{\text{in}}{\text{mm}}$) (For Estimating Only)

600 VAC Max., 300 VDC Max.

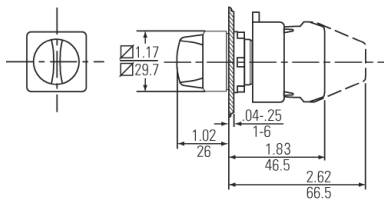
10 Amps Continuous AC, 2.5 Amps Continuous DC



Round Key Selector Switch



Typical Back Side View



Square Key Selector Switch



Product Number Selection Instructions: See page 9-79