

Pilot and Signaling Devices

Heavy-Duty 22.5 mm Watertight/Oiltight Selector Switches

Section 9

C-2000

2-Position Lever Operated Selector Switches

Non-Illuminated

600 VAC Max., 300 VDC Max.

10 Amps Continuous AC, 2.5 Amps Continuous DC

Black Lever 2-Position

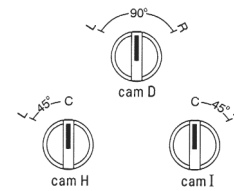
Position Type	Operator Style	Release Type	Cam Code	Product Number
2-Position	Round Polished Chrome	Maintained	D, I, H	P9CSV#0N
2-Position	Round Satin Chrome	Maintained	D, I, H	P9MSV#0N
2-Position	Round Engineered Plastic	Maintained	D, I, H	P9XSV#0N
2-Position	Round Polished Chrome	Spring Return L → C	H	P9CSVH1N
2-Position	Round Satin Chrome	Spring Return L → C	H	P9MSVH1N
2-Position	Round Engineered Plastic	Spring Return L → C	H	P9XSVH1N
2-Position	Round Polished Chrome	Spring Return L ← R	D	P9CSVD5N
2-Position	Round Satin Chrome	Spring Return L ← R	D	P9MSVD5N
2-Position	Round Engineered Plastic	Spring Return L ← R	D	P9XSVVD5N
2-Position	Round Polished Chrome	Spring Return C ← R	I	P9CSVI5N
2-Position	Round Satin Chrome	Spring Return C ← R	I	P9MSVI5N
2-Position	Round Engineered Plastic	Spring Return C ← R	I	P9XSVI5N

Replace double dagger (§) in maintained product number with cam code from cams table below.

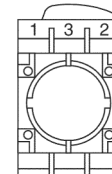
Cams

Choose desired cam. Note selection and position of contact block(s).

§Cam Code				Screw Terminal Contact Block		Quick-Connect Terminal Contact Block	
				Position 1	Position 2	Position 1	Position 2
D	O	—	X	—	P9B10VN	—	P9B10FN
	X	—	O	P9B01VN	—	P9B01FN	—
	O	—	X	P9B11VN	—	—	—
	X	—	O	—	—	—	—
I	—	O	X	—	P9B10VN	—	P9B10FN
	—	X	O	P9B01VN	—	P9B01FN	—
	—	O	X	P9B11VN	—	—	—
	—	X	O	—	—	—	—
H	X	O	—	—	P9B10VN	—	P9B10FN
	O	X	—	P9B01VN	—	P9B01FN	—
	X	O	—	P9B11VN	—	—	—
	O	X	—	—	—	—	—



Operator Positions



Contact Block Positions
(viewed from rear)



Outlines and Dimensions: See page 9-77

Accessories: See page 9-102 to 9-111

Technical Data: See page 9-119 to 9-125

Pilot and Signaling Devices

Section 9

Heavy-Duty 22.5 mm Watertight/Oiltight Selector Switches

C-2000

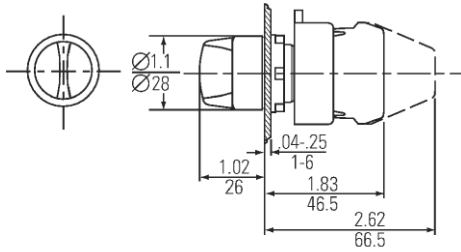
Knob and Lever Operated

Non-Illuminated

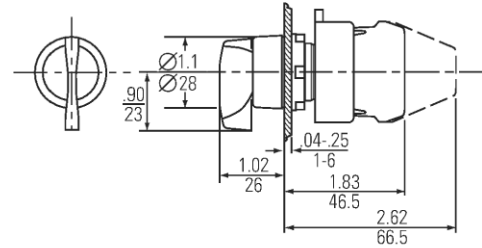
Outlines and Dimensions ($\frac{\text{in}}{\text{mm}}$) (For Estimating Only)

600 VAC Max., 300 VDC Max.

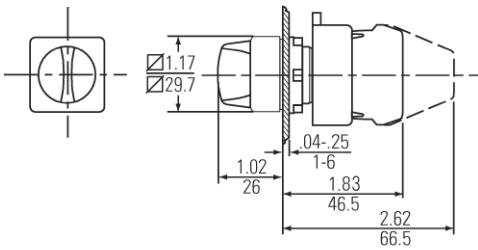
10 Amps Continuous AC, 2.5 Amps Continuous DC



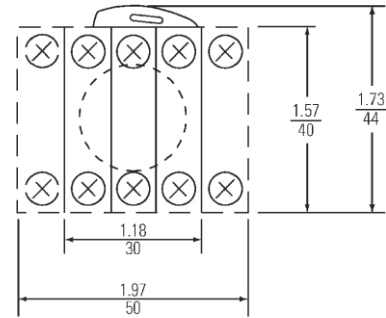
Round Knob Selector Switch



Round Lever Selector Switch



Square Knob Selector Switch



Typical Back Side View



Pilot and Signaling Devices

Heavy-Duty 22.5 mm Watertight/Oiltight Accessories

C-2000

Section 9

Power Supplies and Contact Blocks

600 VAC Max., 300 VDC Max.

10 Amps Continuous AC, 2.5 Amps Continuous DC

Resistor Power Supplies AC/DC

Bulb Type	Terminal type	Lamp Operational Mode	Voltage	Product Number
Incandescent	Screw Terminal	Steady	110-120V	P9PRNVJ
Incandescent	Screw Terminal	Steady	220-240V	P9PRNVN
Incandescent	Screw Terminal	Steady with Diode	220-240V	P9PRDVN
Incandescent	Screw Terminal	Steady Long Life	110-120V	P9PRLVJ
Incandescent	Screw Terminal	Panel Test	220-240V	P9PRTVN

Full-Voltage Power Supplies Low-Level Energy (Reed)

Bulb Type	Terminal type	Lamp Operational Mode	Voltage	Product Number
Incandescent	Quick-Connect Terminal	Steady	-	P9PDHF ¹

¹For use with Reed Logic flange only.

Contact Blocks

Terminal type	Contact Block Type	Contact Configuration	Product Number
Screw Terminal	Standard	1NO	P9B10VN
Screw Terminal	Standard	1NC	P9B01VN
Screw Terminal	Standard	1NO-1NC	P9B11VN
Screw Terminal	Standard	2NO	P9B20VN
Screw Terminal	Standard	2NC	P9B02VN
Screw Terminal	Early Make	1NO	P9B10VA
Screw Terminal	Late Opening	1NC	P9B01VR
Screw Terminal	Base Mount	1NO	P9B10BN
Screw Terminal	Base Mount	1NC	P9B01BN
Quick-Connect Terminal	Standard	1NO	P9B10FN
Quick-Connect Terminal	Standard	1NC	P9B01FN
Quick-Connect Terminal	Reed	1NO	P9B10FH ²
Quick-Connect Terminal	Reed	1NC	P9B01FH ²

²Requires special flange (P9ACFSM).

Order on page 9-110.

