







Double function push-buttons ⁽¹⁾

	Colours (2)	Plastic caps without symbols		Plastic caps with symbols		
		Cat. no.	Ref. no.	Cat. no.	Ref. no.	
						
IP40 protection (acc. to IEC 529)						
 <p>With white lens assembled for indicator light. Black insert for not illuminated function included in the packaging.</p> <div style="display: flex; align-items: center;">  <div style="margin-left: 10px;"> <p>A flush</p> <p>lens</p> <p>B flush</p> </div> </div> <div style="display: flex; align-items: center; margin-top: 10px;">  <div style="margin-left: 10px;"> <p>A flush</p> <p>lens</p> <p>B raised</p> </div> </div>	A - Black B - Red	P9DPLNRG00	186880	P9DPLNRG01	186890	
	A - Green B - Red	P9DPLVRG00	186881	P9DPLVRG01	186891	
	A - Black B - Red	P9DPLNRS00	186882	P9DPLNRS01	186892	
	A - Green B - Red	P9DPLVRS00	186883	P9DPLVRS01	186833	
	Clear cap (silicon rubber)					
	 <p>IP66 protection (acc. to IEC 529)</p>	A - flush B - flush	080CPDT	173208	080CPDT	173208
A - flush B - raised		P9ADCST	187796	P9ADCST	187796	

(1) With white lens assembled.
Black insert for not illuminated function included in the packaging.
(2) Integral caps, colours not replaceable.

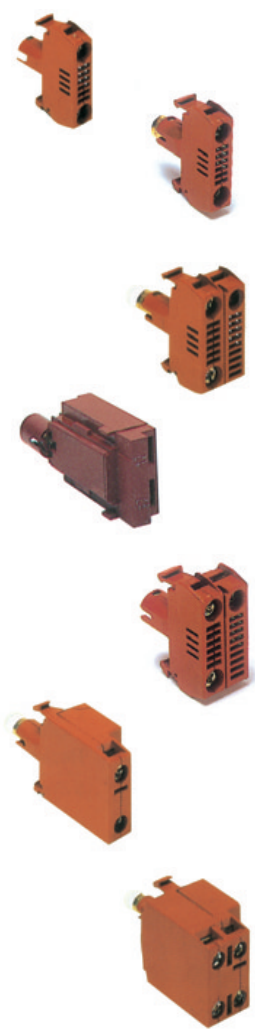


Power supplies

With screw



min. 1 of 22 AWG (0.32 mm²)
max. 2 of 12 AWG (3.3 mm²)



Position on flange 2 3 1	Contact type	Cat. no.	Ref. no.
	Full voltage \cong IEC: BA9S max 380V-2W not included UL-CSA: BA9S max 250V-2W not included	P9PDNV0	187020
	Long life 110/120V \cong BA9S 130V-2W included	P9PRLVJ	187021
	Logic Reed idem for low power flange for P9PDHF (see E.00)	P9PDHF P9ACFSM	187056 187846
	Resistor + Diode 220/240 V \sim BA9S 130V-2W included	P9PRDVN	187022
	Resistor 110/120V \cong BA9S 60V-1.2W included	P9PRNVJ	187023
	220/240V \cong BA9S 130V-2W included	P9PRNVN	187024
	Resistor ENEL version BA9S 48V-2W included 110V \cong	P9PREVJ	187025
	125/127V \cong	P9PREVL	187026
	UL-CSA: BA9S max 250V-2W not included Test full voltage (1) \cong IEC: BA9S max 380V-2W not included	P9PDTV0	187027
	Test resistor (1) 220/240 V \cong BA9S 130V-2W included	P9PRTVN	187028
	Transformer 50/60 Hz BA9S 6V-1.5W included	P9PTNV ♦	see bottom
	Multifunction (2) full voltage 24V \cong BA9S 24V-2W included	P9PDMVD	187040
	Multifunction (2) full voltage 110V \cong BA9S 130V-2W included	P9PDMVJ	187041
	Multifunction (2) Transformer 50/60 Hz BA9S 6V-0.6W included	P9PTMV ♦	see bottom
	Full voltage IEC: BA9S max 380V-2W not included UL-CSA: BA9S max 250V-2W not included	P9PDNF0	187055
	Standard light		
	24V AC/DC	P9PLNVD •	see bottom
	120V AC	P9PLNVJ •	see bottom
	230V AC	P9PLNVN •	see bottom
	Flashing light		
	24V AC/DC	P9PLFVD •	see bottom
	120V AC	P9PLFVJ •	see bottom
230V AC	P9PLFVJ •	see bottom	

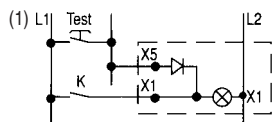
Faston



1 x (6.35 x 0.8 mm)
2 x (2.8 x 0.8 mm)



Integrated LED



- (2) Y1 Y2 Do not connect for flashing light
 • • Link to external contact in order to have steady or flashing light
 Y1 Y2 C closed = Steady light
 L C J C open = Flashing light

LED colour•	orange A	white B	yellow G	blue L	red R	green V
-------------	-------------	------------	-------------	-----------	----------	------------

The catalogue numbers in **bold** are available from stock.

Voltage	110-120	220-250	380	415-440	480-500
	♦	J	N	U	W Y

For reference numbers, see chapter X, pg. X.10

