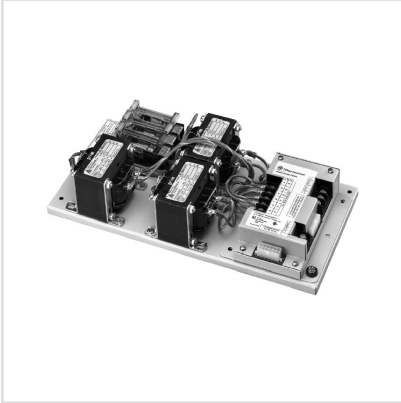


## Catalog No. SVCA600D



**Description SPECTRA 600V DELTA MVT VOLTAGE COND**

**UPC No 783175184453**

**Products > Circuit Breakers > Accessories**

The Voltage Conditioner Plate is used to provide voltage sensing signals to Spectra RMS Molded Case Circuit Breakers with MicroVersaTrip PM trip units via the Distribution Cable System. The Voltage Conditioner Plate includes the Voltage Conditioner Assembly (catalog number SVCAA) as an integral component and also includes fuse protection for the ac source input terminals and three 1-VA high accuracy potential transformers. The Voltage Conditioner Plate requires a control power source of +24 Vdc to operate properly (the Power Supply Assembly or Power Supply Plate can provide this required input). The unit also requires direct ac voltage inputs from the ac source. A GE POWER LEADER network connection is provided. . Seven versions are available to use on various voltage/wiring schemes. Not suitable for 400 Hz.

### Specifications

#### Descriptors

Category	Accessories
GO Schedule	EM

#### Specifications

GSA Compliance	No
Stock Status	A