





C SERIES

CONDUIT BODIES



INCLUDES:

-  x 2 cover screws
-  set screws for EMT
-  x 1 neoprene gasket
-  x 1 stamped aluminum cover



CONSTRUCTION

- Die cast aluminum combination fitting (EMT and rigid) available in 1/2", 3/4", 1", 1-1/4", 1-1/2", 1-3/4" and 2" sizes.
- Unit is threaded for rigid conduit and has set screws for EMT.
- Durable grey powder coat paint finish.

FEATURES

- Product includes conduit body, black neoprene gasket, stamped aluminum cover with screws.

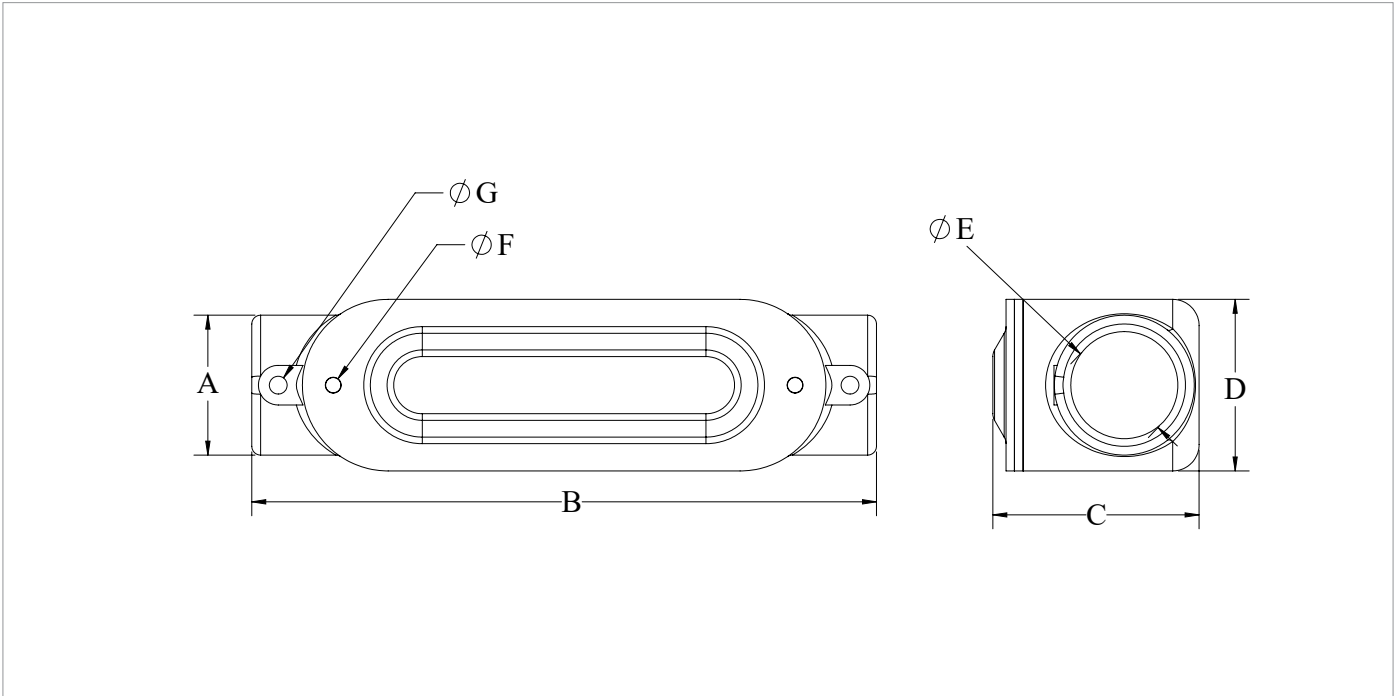
APPLICATION:

-  Ideal for industrial or commercial use
-  Weather resistant

CERTIFICATION:



DIMENSIONS



PRODUCT	A	B	C	D	E CONDUIT SIZE	F COVER SCREWS	G SET SCREWS
C-50-CG CONDUIT BODY	1.06	4.75	1.56	1.31	1/2"	2x8-32	2x10-24
C-75-CG CONDUIT BODY	1.32	5.61	1.81	1.53	3/4"	2x8-32	2x10-24
C-100-CG CONDUIT BODY	1.56	6.48	2.13	1.78	1"	2x8-32	2x10-24
C-125-CG CONDUIT BODY	2.00	8.34	2.77	2.50	1-1/4"	2x12-24	4x1/4-20
C-150-CG CONDUIT BODY	2.25	8.11	2.90	2.50	1-1/2"	2x12-24	4x1/4-20
C-200-CG CONDUIT BODY	2.74	10.52	3.58	3.13	2"	2x12-24	4x1/4-20

ORDER INFO

STOCK CODE / DESCRIPTION
008767 C-50-CG CONDUIT BODY
008768 C-75-CG CONDUIT BODY
008769 C-100-CG CONDUIT BODY
008770 C-125-CG CONDUIT BODY
008771 C-150-CG CONDUIT BODY
008772 C-200-CG CONDUIT BODY