

# ASTRONOMICAL TIME SWITCH

## RT-200

Turns lights on and off relative to dusk or dawn, or at selected times of day on selected days of the week

Bright OLED display for clear viewing from a wide angle

Shipped in default 2 hour countdown time, easily changed to other lengths or none.



Ideal for any application where precise time-based control is desired

Includes eight programmable control schedules

Ideal for meeting California Title 24 Residential Exterior Astronomical Time-Switch with max 6 hour countdown requirement

## Description

The RT-200 Astronomical time clock and timer switch automatically turns lighting or other loads on and off according to user programming. It replaces standard single-pole wall switches for energy savings and security.

## Operation

Users can manually turn the connected load on or off by pressing the on/off button. Prior to automatic operation, the local longitude, latitude, time and date must be entered into the time switch. The user can then program up to eight schedules to automatically turn the connected load on and off at the desired times. If lighting has been turned on manually prior to a scheduled on-time, it will remain on until the next scheduled off-time, or until turned off manually. The button switch is a customizable manual override feature with a default countdown of 2 hours. An audible beep and/or a visible flash warn of an impending automatic off-time, if enabled.

## Features

- User programmable wall switch for astronomical and scheduled control
- Replaces single-pole switch
- Countdown feature allows user to manually turn on the load and then the load turns off automatically after a specified period of time. The default is 2 hours.
- Optional audible beep and visible light flash warnings before automatic off
- 72 hour power failure memory
- Lighted switch for visibility in darkened rooms
- Choice of five decorator colors
- Operates most common types of lighting
- Relay-based switching
- Zero crossing reduces stress on the relay and increases product longevity
- No current leakage to load in off mode for safety
- Compatible with decorator wall plates
- CA Title 24 compliant for control of lighting

## ON/OFF Programs

Each of the eight automatic control programs includes user selectable day(s) of operation and on and off times. Day(s) of operation choices include: everyday, weekdays, weekends, a selected day or no days, to deactivate the program. On- and off-time choices include: specific time of day, or up to 99 minutes before or after dusk or dawn.

## Applications

The RT-200 Astronomical Time Switch is an ideal control choice for both outdoor and indoor lighting as well as spas. The astronomic clock function saves energy by automatically making daily adjustments to on- and off-times as the days become longer or shorter, so lighting is only turned on when it is needed. Both the astronomic and scheduling functions provide security by automatically turning lighting on to make the application feel inviting and to provide a lived-in look.

PROJECT

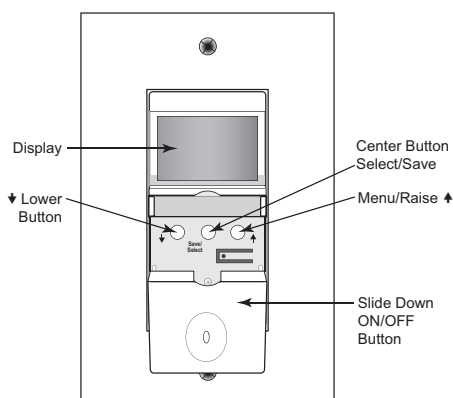
LOCATION/  
TYPE

## Specifications

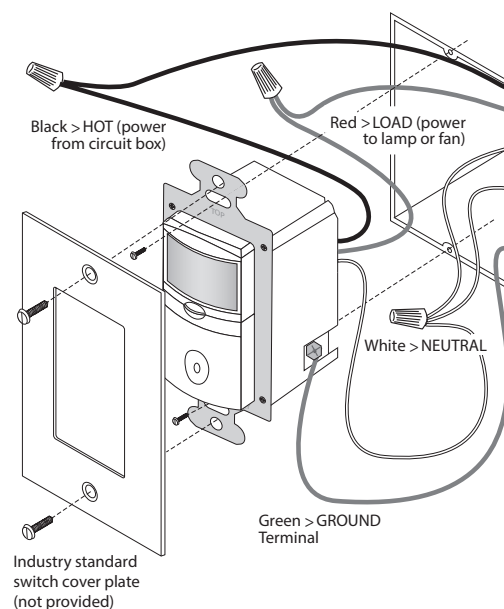
- 120/277VAC, 50/60 Hz; neutral required  
@120V, 0-800W incandescent, ballast, magnetic low voltage (MLV), electronic low voltage (ELV), and 1/6Hp motor  
@277V, 0-1200W ballast, 1/6HP motor
- If lights are overridden on by button, the intelligent countdown timer ensures lights will turn off only if they are scheduled to be off
- No minimum load requirement
- 170° OLED display
- 8 programmable schedules for on/off times on selected days of the week
- 2.63" x 1.69" x 1.88" (67.8mm x 42.9mm x 47.8mm) L x W x D
- Operating conditions: 32-122°F (0-50°C), 95% RH, non-condensing; for indoor use only
- UL and cUL listed
- Five year warranty

## Installation & Wiring

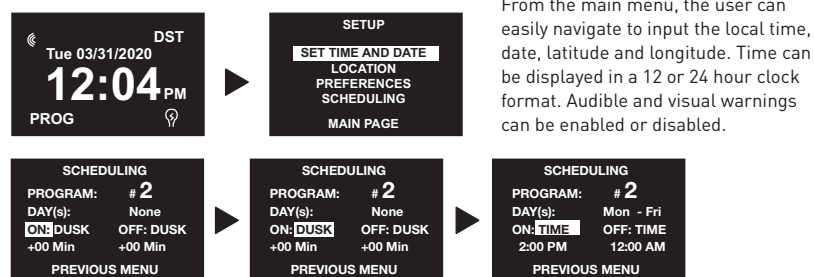
### Product Controls



### Wiring Diagram



### Data Entry and Program Options



Optional settings for each of the eight programs include:

- |  |  |
|--|--|
| Day(s) of week:  | On-time:   |
| <ul style="list-style-type: none"> <li>• None (program off)</li> <li>• All (seven days)</li> <li>• Monday-Friday</li> <li>• Weekends</li> <li>• Specific day of week*</li> </ul> | <ul style="list-style-type: none"> <li>• Specific time</li> <li>• Up to 99 minutes before or after dusk</li> </ul> |
|  | Off-time:  |
|  | <ul style="list-style-type: none"> <li>• Specific time</li> <li>• Up to 99 minutes before or after dawn</li> </ul> |

Countdown setting options:

- None
- 5, 10, 15, or 30 minutes
- 1, 2, 3, 4, 5, or 6 hours
- (2 hour default from factory)

\* For holidays, set a schedule for each individual day of week, and then change day to "none" for holiday shutoff.

## Ordering Information

Catalog #	Color	Voltage	Load Rating
<input type="checkbox"/> RT-200-W	White	120VAC, 50/60Hz or 277VAC, 50/60Hz	@ 120VAC: 0-800W incandescent, ballast, MLV, ELV; 1/6Hp motor load or @ 277VAC: 0-1200W ballast; 1/6Hp motor
<input type="checkbox"/> RT-200-I	Ivory		
<input type="checkbox"/> RT-200-LA	Light Almond		
<input type="checkbox"/> RT-200-A	Almond		
<input type="checkbox"/> RT-200-B	Black		

Order wallplates separately.