

## P-3520

### 3-5/8" Round Pre-mounting Plate Recessed Lighting

Job Information		
Project Name		Type
Location		
Quantity		Date
Contact/Phone		
Notes		

#### Features

##### General

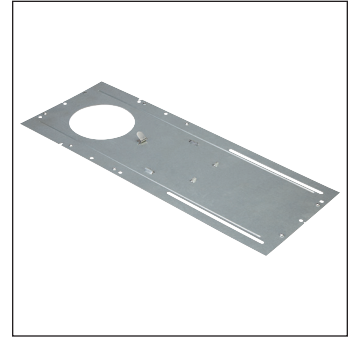
Constructed of galvanized steel, this round opening pre-mounting plate is used to mount 3½" LUNA fixtures.

##### Mounting

The plate includes mounting holes and tracks to satisfy any type of installation. Alignment notches on plate to help aligning multiple plates. Plate also includes a pressure clip to secure driver to plate.

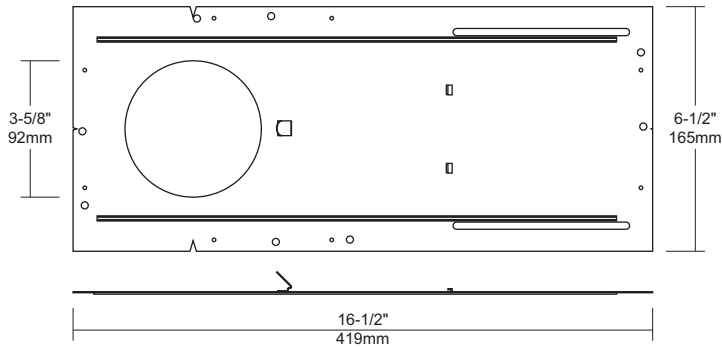
##### Compatible Fixtures

- RA35-12G
- RA35S-12G
- RA35-12F
- RA35S-12F



#### Description

The P-3520 is a pre-mounting plate for use with 3½" LUNA fixtures.



**Notes:** Due to our continued efforts to improve our products, product specifications are subject to change without notice.

#### Ordering Guide



##### P-3520

3½" round pre-mounting plate for 3½" LUNA fixtures.

#### Accessories



##### P-NCMK-1

Hanger Bar Kit. Includes hanger bars, brackets and screws.

#### Compatible Fixtures



##### RA35-12G

3½" LUNA round gimbal recessed fixture.



##### RA35S-12G

3½" LUNA square gimbal recessed fixture.



##### RA35-12F

3½" LUNA round fixed recessed fixture.



##### RA35S-12F

3½" LUNA square fixed recessed fixture.